



PRODUCTOS DETECTABLES PARA LA INDUSTRIA ALIMENTARIA

¿Por qué usar detectables?

Acreditados con ISO9001.2008. Ofrecemos innovación, entusiasmo y previsión.

Nuestro enfoque clave es el diseño, fabricación y suministro de productos Metal Detectables y Rayos X. Ofrecemos al mercado nuevo desarrollo y soluciones innovadoras. Esto nos permite disponer de un amplio rango de productos detectables, dando a nuestros clientes una mayor oportunidad para reducir el riesgo de contaminación.

NUESTRA MISIÓN

Nos orgullece ofrecer al mercado global un servicio rápido, junto con nuestro compromiso de innovación en diseño y calidad. Nuestro enfoque es pionero y proactivo a los cambios en la industria y nos esforzamos en fortalecer nuestra compañía y expandir nuestro mercado actual, continuamente explorando nuevas oportunidades.

ASEGURAMIENTO DE LA CALIDAD

Nuestros productos, no son solo detectables, sino que también están diseñados para su contacto con alimentos.

- Metal Detectable y/o Rayos X
- Visualmente detectable
- Utilizar materiales que cumplen con los estándares globales europeos y otros para uso en contacto con alimentos
- Tener superficies lisas y lavables accesibles

La característica clave de los productos fabricados a partir de polímero detectable es que los fragmentos son detectados y rechazados por detección estándar de metal en proceso y equipo de rayos x. Todos nuestros productos son probados independientemente y cumplen la legislación actual de la UE, junto con otros requisitos internacionales para su uso en contacto con alimentos.

El reconocimiento visual es también una característica importante de los detectables, no sólo para la identificación de productos alimenticios, sino también para la segregación dentro del entorno de la fábrica. Ofrecemos la más amplia gama de colores de higiene actualmente disponibles en el mercado. Esto permite a los clientes incorporar Negro, Azul, Rojo, Verde, Amarillo, Violeta Blanco, Naranja y en los procedimientos de control de higiene.

¿Qué tal son nuestros detectables?

Nuestros productos están hechos de diversos materiales, los que ofrecen las mejores capacidades para aplicaciones en alimentos que no siempre se puede utilizar una alternativa de metal. Todos los productos de nuestra gama son detectables ya sea por detección de metales y sistemas de rayos X, o pueden detectarse visualmente.

Nuestros productos están hechos con una proporción de un oligoelemento metálico magnético que está presente en la mayoría de los casos a través de todo el objeto, esto es a un tamaño y una concentración que permite un flujo homogéneo en todo, asegura que todas las partes son potencialmente detectables por sistemas de detección de metales sin cambiar las propiedades físicas del objeto. Otros productos pueden tener una tira metálica unida al producto o similar.

Máquinas de rayos X tienen una ventaja sobre los detectores de metales en ser capaz de detectar una gama más amplia de cuerpos extraños esto es debido a que el cuerpo extraño debe ser significativamente diferente de la comida o de otro material en rayos X densidad con el fin de ser detectado. En la práctica, una máquina de rayos X será capaz de detectar objetos tales como vidrio, metal, piedra, hueso y algunos plásticos más densos, por ejemplo PVC.

El plástico visible por Rayos X de ha sido desarrollado para trabajar en conjunto con detección de metales y sistemas de rayos X, de detección, se utiliza un elemento de rayos X rastro visible que está presente a lo largo de todo el objeto y aumenta su densidad, que permite la detección de contaminación por cuerpos extraños al final de la línea de producción.

Nuestros productos son todos detectables pero habrá un punto de corte. Esto no va a ser sistemática para todos los clientes y de hecho para todas las máquinas / líneas o sitios.

No hay garantía de 100% de riesgo cero con cualquiera de los productos detectables.

¿Has pensado por qué pequeñas piezas de metal son capaces de entrar en las líneas de producción?

Siempre habrá un límite en cuanto a en qué punto nuestro material (o cualquier otro material detectable) dejará de ser detectado!

Si se utiliza una máquina de rayos X, la densidad del producto debe ser menor que la materia del objeto extraño.

INDICE

| | |
|----|--|
| 02 | ¿Por qué usar Detectables? ¿Que tal son nuestros Detectables? |
|----|--|

| | |
|----|--|
| 04 | PRODUCTOS METAL DETECTABLES & RAYOS X |
| 05 | Papelería Detectable |
| 19 | Almacenamiento Detectable, Mezclas & mantenimiento de material incluyendo cepillos y escobas |
| 32 | Tiritas y Apósitos Detectables |
| 34 | Cutters de seguridad Detectables |
| 42 | Cuchillos Profesionales Detectables |
| 45 | Higiene y Ropa de Trabajo Detectable |
| 54 | Bridas Detectables |
| 59 | Etiquetas detectables |
| 63 | Test calibración Detector de Metales y Rayos X |

| | |
|----|--|
| 65 | ACERO INOXIDABLE & PRODUCTOS DE ALUMINIO |
| 66 | Acero Inoxidable y Papelería de Aluminio |
| 75 | Acero Inoxidable y Almacenamiento de Aluminio, mezclas y mantenimiento de material |

| | |
|----|--|
| 81 | PRODUCTOS DETECTABLES DE INGENIERIA |
| 82 | Juntas Detectables |
| 83 | Anillos toroidales y juntas Detectables |
| 83 | Bolas de filtrado Detectables |
| 83 | Silicona Detectable |
| 84 | Detectable Acetal |
| 84 | Detectable PTFE Detectable |
| 85 | Detectable UHMWPE Detectable |
| 85 | Detectable PA6 Detectable |
| 85 | Cinta transportadora Detectable |
| 86 | Cinta de Poliuretano Detectable Detectable |
| 86 | Detectables de Polietileno |
| 86 | Caja de ratón Detectable |
| 86 | Rasquetas inoxidable Detectables |
| 87 | Componentes Detectables |

Productos Metal Detectables y Rayos X

Contenidos

MATERIAL DE OFICINA DETECTABLE

| | |
|----|--|
| 6 | Bolígrafos detectables de plástico |
| 10 | Bolígrafos metal detectable |
| 11 | Lápiz portaminas y anitideslizante detectable |
| 11 | Cordones con dispositivo de seguridad irrompible |
| 11 | Marcadores permanentes detectables |
| 12 | Marcadores de pizarra blanca detectables |
| 12 | Marcadores retráctiles permanentes detectables |
| 12 | Marcadores retráctiles de pizarra blanca detectables |
| 12 | Bolígrafo para pantalla táctil detectable |
| 13 | Puntero PDA detectable |
| 13 | Marcadores fluorescentes detectables y rellenables |
| 14 | Cierre reutilizable documento detectable |
| 14 | Cronómetro y temporizador detectables |
| 15 | Calculadoras detectables y fundas |
| 15 | Alfombrillas de mouse detectables |
| 15 | Soportes de teclado y reglas detectables |
| 16 | Portafolios A4 y pizarra de notas detectable |
| 17 | Tijeras detectables |
| 17 | Porta tarjetas Detectable |
| 18 | Grapadora detectable (y no detectable) y clips |

ALMACENAMIENTO, MEZCLA Y EQUIPO DE MANIPULACIÓN

| | |
|----|--|
| 21 | Rasquetas detectables |
| 22 | Espátulas de metal detectables |
| 23 | Espátulas y recogedores detectables |
| 24 | Recogedores, jarras y agitadores detectables |
| 25 | Cajas detectables |
| 25 | Palas y agitadores detectables |
| 26 | Cubos con y sin tapa y recogedores detectables |
| 27 | Cajas de almacenamiento y contenedores detectables con bolsas y expendedores de bolsas |
| 28 | Escobas y cepillos de resina y plástico polímero completamente y detectables |
| 29 | Rollos de plástico retráctil detectables |
| 29 | Tablas para colgar herramientas detectables |
| 29 | Mazo detectable |
| 30 | Pinzas cierra sacos y gomas detectable |
| 31 | Contenedores y cubos detectables |

TIRITAS DETECTABLES

| | |
|----|-----------------------------------|
| 33 | Metal Detectables |
| 33 | Rayos-X |
| 33 | Caja de almacenamiento Detectable |

CUTTERS DE SEGURIDAD

| | |
|----|----------------------------------|
| 35 | Cutters de seguridad detectables |
| 41 | Cajas de seguridad |

CUCHILLOS PROFESIONALES

| | |
|----|---|
| 42 | Cuchillo detectable filo liso o dentado |
| 44 | Cuchillo detectable diferentes usos |
| 44 | Cuchillos paleta y afilador detectables |
| 44 | Tabla cortadora detectable |
| 44 | Caja de seguridad detectable |

ROPA DE TRABAJO HIGIENE DETECTABLE

| | |
|----|--|
| 47 | Gorros y redecillas detectables |
| 47 | Pasamontañas y redes de moño detectables |
| 48 | Cubre barbas y gomas de pelo detectables |
| 48 | Dispensador de metal multiusos detectable |
| 49 | Delantales desechables de polietileno detectables |
| 49 | Guantes de nitrilo detectables |
| 50 | Guantes de vinilo y dispensadores detectables |
| 50 | Porta guantes detectable |
| 51 | Tapones reutilizables con brida Detectable |
| 51 | Tapones ajustables detectables |
| 51 | Tapones reutilizables con cordón detectable y sin cordón |
| 52 | Tapones desechables con y sin cordón detectables |
| 52 | Dispensador de tapones detectable |
| 52 | Cubre mangas y zapatos detectable |
| 52 | Dispensador automático cubre zapatos detectable |
| 53 | Máscaras FFP desechables detectables |
| 53 | Toallitas desinfectantes detectables |

BRIDAS DETECTABLES

| | |
|----|---|
| 56 | Abrazaderas de nylon y polipropileno |
| 56 | Sujección de abrazaderas de nylon reutilizables |
| 57 | Abrazaderas de cable y pinzas cierra sacos |
| 58 | Pinzas cierra sacos detectables |
| 58 | Sujeta clavos |

ETIQUETAS DE LLAVE DETECTABLES

| | |
|----|---|
| 61 | Etiqueta estándar para llave detectable |
| 61 | Dispensador de etiquetas de llave detectable |
| 61 | Etiquetas de plástico reutilizables detectables |
| 62 | Etiquetas de numeradas 1-100 detectables |
| 62 | Etiquetas de Trazabilidad detectables |
| 62 | Señales de prevención de riesgos detectables |

TEST CALIBRACIÓN METAL Y RAYOS X

| | |
|----|--------------------------------------|
| 64 | Test calibración detector de metales |
| 64 | Test Rayos X |
| 64 | Accesorios |



Our stationery range has been developed for food processing and similar applications. Made from metal detectable X-Ray visible polypropylene materials which are high impact resistant. Detectamet products, equipment and materials are suitable for packaging and food contact. Our products meet the requirements of the acts, regulations and orders applicable in Europe and the United Kingdom relating to goods supplied including, but not necessarily limited to, the following:

- **1935/2004 - Materials and Articles Intended to Come into Contact with Food**, and all subsequent amendments (and their transposition into National Law).
- **2023/2006 - Good Manufacturing Practice for Materials and Articles Intended to Contact with Food**, and all subsequent amendments (and their transposition into National Law).

Overall Migration Limits are available for the majority of our products. All our inks are non toxic, meeting the requirements of ISO12757-2 (The International Organization for Standardization published standards for ball point and roller ball pens). Declarations of conformity can be issued for all products.

DETECTABLE STATIONERY

| | |
|----|---|
| 6 | Detectable Plastic Pens (1 Piece & Retractable) |
| 10 | Detectable Metal Pens (1 Piece & Retractable) |
| 11 | Detectable Mechanical Pencil & Easy Grip Pen Sleeve |
| 11 | Lanyards with Breakaway Safety Feature |
| 11 | Detectable Marker Pens |
| 12 | Detectable Retractable Marker Pens |
| 12 | Detectable Touch Screen Pens |
| 13 | Detectable Highlighters |
| 14 | Detectable Reusable Document Fastener |
| 14 | Detectable Stopwatch & Process Timer |
| 15 | Detectable Calculators & Holders |
| 15 | Detectable Mouse Mat |
| 15 | Detectable & Stainless Steel Rulers |
| 16 | Detectable Plastic Clipboard & Memo Holder |
| 17 | Detectable Scissors |
| 17 | Detectable Swipecard Holder |
| 18 | Detectable Papergrip |
| 18 | Detectable & Non-Detectable Staple Free Stapler |

Metal Detectable **HD** Pressurised 'Cryo' Pens



► Writes under water and in powdery conditions

- Writes upside down
- Works in greasy conditions
- Available in black or blue ink

Works up to **200°**

Works down to **-20°**

Easily refillable

3 clip styles available



Available in 9 housing colours:



Cryo refills are also available in the following housings:

Metal Stick Pen

Stainless Steel Retractable Pen



Detectable Refillable Retractable Highlighters



LOOK, NO CAP!

- Chisel tip - Produces broad or fine lines ideal for highlighting or underlining
- Metal Detectable
- No cap to lose

Easily **Refillable** refills sold separately

Special sealing system - Prevents ink from drying out



Available in 9 colours:

INTRODUCING THE NEW

HD PEN

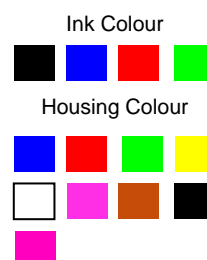
A REVOLUTION IN DETECTABLE PEN DESIGN



- *Sits well in the hand with natural balance and feel*
- *Slightly textured finish for use in wet and greasy environments*
- *Rugged construction*
- *Stainless Steel return spring mechanism to give continuous performance*
- *Available in three housing styles*
- *Refillable*



| CODE | DESCRIPTION | PACK QTY |
|-------------|---|----------|
| DTM HD 0020 | Detectable Retractable HD Pen - Black Ink | 50 |
| DTM HD 0021 | Detectable Retractable HD Pen - Blue Ink | 50 |
| DTM HD 0022 | Detectable Retractable HD Pen - Red Ink | 50 |
| DTM HD 0028 | Detectable Retractable HD Pen - Green Ink | 50 |

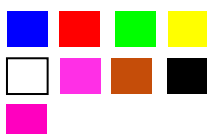




Ink Colour



Housing Colour



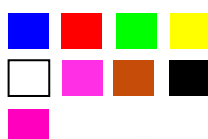
Detectamet Detectable plastic pens are all available with pocket clip, without pocket clip or with lanyard attachment facility.



Ink Colour



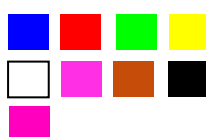
Housing Colour



Ink Colour



Housing Colour



Detectable Retractable Gel Pens

Specifically developed for cold environments this unique product offers outstanding writing characteristics in the most adverse conditions. The refill incorporates a stainless steel tip, tough carbon steel ball and a nickel silver tube. These combinations ensure easy flowing when writing in a cold environment.

| CODE | DESCRIPTION | PACK QTY |
|------------------|---------------------------------|----------|
| DTMGP HD 0020 WC | Black Ink - With Pocket Clip | 50 |
| DTMGP HD 0021 WC | Blue Ink - With Pocket Clip | 50 |
| DTMGP HD 0022 WC | Red Ink - With Pocket Clip | 50 |
| DTMGP HD 0028 WC | Green Ink - With Pocket Clip | 50 |
| DTMGP HD 0020 MC | Black Ink - Without Pocket Clip | 50 |
| DTMGP HD 0021 MC | Blue Ink - Without Pocket Clip | 50 |
| DTMGP HD 0022 MC | Red Ink - Without Pocket Clip | 50 |
| DTMGP HD 0028 MC | Green Ink - Without Pocket Clip | 50 |
| DTMGP HD 0020 LY | Black Ink - Lanyard Attachment | 50 |
| DTMGP HD 0021 LY | Blue Ink - Lanyard Attachment | 50 |
| DTMGP HD 0022 LY | Red Ink - Lanyard Attachment | 50 |
| DTMGP HD 0028 LY | Green Ink - Lanyard Attachment | 50 |
| INK REFILLS | | |
| DTMGP 0020 RF | Black Gel Ink Refill | 50 |
| DTMGP 0021 RF | Blue Gel Ink Refill | 50 |
| DTMGP 0022 RF | Red Gel Ink Refill | 50 |
| DTMGP 0028 RF | Green Gel Ink Refill | 50 |

Detectable Retractable Cryo Pens

Our Cryo pens have been designed to work in wet, greasy and powdery environments, this pen comes with all the benefits of the retractable pen housing, whilst incorporating a pressurised refill which was initially designed for space travel. Available in metal detectable or metal detectable and x-ray visible.

| CODE | DESCRIPTION | PACK QTY |
|------------------|--------------------------------|----------|
| DTMCR HD 0027 | Blue Ink - With pocket Clip | 50 |
| DTMCR HD 0028 | Black Ink - With pocket Clip | 50 |
| DTMCR HD 0027 LY | Blue Ink - Lanyard Attachment | 50 |
| DTMCR HD 0028 LY | Black Ink - Lanyard Attachment | 50 |
| INK REFILLS | | |
| DTMCR 0027 RF | Blue Pressurised Ink Refill | 50 |
| DTMCR 0028 RF | Black Pressurised Ink Refill | 50 |

Detectable Retractable Fine Tip Pens

The Fine Tip Ballpoint Pen refill has been developed for users who require extremely fine writing without losing any of its sharpness. Available in Black, Blue, Red & Green ink colours.

| CODE | DESCRIPTION | PACK QTY |
|------------------|---------------------------------|----------|
| DTMFT HD 0020 WC | Black Ink - With Pocket Clip | 50 |
| DTMFT HD 0021 WC | Blue Ink - With Pocket Clip | 50 |
| DTMFT HD 0020 MC | Black Ink - Without Pocket Clip | 50 |
| DTMFT HD 0021 MC | Blue Ink - Without Pocket Clip | 50 |
| DTMFT HD 0020 LY | Black Ink - Lanyard Attachment | 50 |
| DTMFT HD 0021 LY | Blue Ink - Lanyard Attachment | 50 |
| INK REFILLS | | |
| DTMFT 0020 RF | Black Fine Tip Ink Refill | 50 |
| DTMFT 0021 RF | Blue Fine Tip Ink Refill | 50 |

Detectable Economy Retractable Pen

Our new Standard Economy Pen incorporates all the basic requirements needed to reduce the risks of product contamination by using detectable equipment. This refillable and retractable pen is available with a blue, black, red or green basic ink in an all metal refill. The blue shell of each pen will have an end cap to match the colour of the ink.

The pen and end cap are made from a plastic polymer that offers double detectability which means that all of the pen, or broken pieces can be identified by standard metal detectors and X-ray systems. Pressing the strong pocket clip will initiate retraction and the ridged grip improves the writers hold on the pen.

| CODE | DESCRIPTION | PACK QTY |
|----------|-------------|----------|
| DTM 0030 | Black ink | 50 |
| DTM 0031 | Blue ink | 50 |
| DTM 0032 | Red ink | 50 |
| DTM 0038 | Green ink | 50 |

4 Colour Detectable Retractable Pen

Four ink colours in one detectable pen. Do you need four different pens so you can write colour coded notes, marks and signatures?

This time saving design can save you the hassle of looking for another pen. The new pen can hold a red, green, blue AND black ink cartridge all in the one detectable plastic shell. Each cartridge has an easy write fine nib and can be refilled separately as required.

| CODE | DESCRIPTION | PACK QTY |
|------|---|----------|
| | Detectable retractable pen - 4 ink colour | 50 |

Detectable One Piece HD Stick Pens

Our most economical detectable pen, our Stick pens are suitable for many applications, ideal for use in ambient working temperatures and a clean environment, or where a one piece pen is stipulated. Now with new and improved high quality refills. Available in metal detectable only or metal detectable and x-ray visible.

| METAL DETECTABLE | DESCRIPTION | PACK QTY |
|------------------|------------------------|----------|
| DTM 0009 WC | Black Ink | 50 |
| DTM 0011 WC | Blue Ink | 50 |
| DTM 0013 WC | Red Ink | 50 |
| DTM 0014 WC | Green Ink | 50 |
| INK REFILLS | | |
| DTM 0009 RF | Black Stick Pen Refill | 50 |
| DTM 0011 RF | Blue Stick Pen Refill | 50 |
| DTM 0013 RF | Red Stick Pen Refill | 50 |
| DTM 0014 RF | Green Stick Pen Refill | 50 |

Detectable 'SP Style' Stick Pen

Due to popular demand the new 'SP' Stick Pen has been designed for those customers wanting a product which is more appealing to the eye. Suitable for visitors and factory managers. Made with metal detectable ABS. Available in blue housing with a choice of blue, black, red & green ink. Available without clip only.

| CODE | DESCRIPTION | PACK QTY |
|-------------|---|----------|
| DTM 0033 SP | Detectable 'SP style' stick pen - Blue Ink | 50 |
| DTM 0034 SP | Detectable 'SP style' stick pen - Black Ink | 50 |
| DTM 0035 SP | Detectable 'SP style' stick pen - Red Ink | 50 |
| DTM 0036 SP | Detectable 'SP style' stick pen - Green Ink | 50 |



Ink Colour



Housing Colour



Ink Colour (4 in 1)



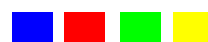
Housing Colour



Ink Colour



Housing Colour



Ink Colour



Housing Colour



**NEW
PRODUCT**



Stainless Steel
Brass Pen

Ink Colour



**HOT
PRODUCT**



Stainless Steel
Pen



Ink Colour



Detectable Stainless Steel Retractable Pens

Offering all the benefits of the retractable pen and manufactured from Stainless Steel. Suitable for a range of food related environments. Includes either standard ink, pressurised ink or our **NEW** Gel & Fine Point inks.

| CODE | DESCRIPTION | PACK QTY |
|--------------------------------------|-------------------------|----------|
| Stainless Steel and Brass Pen | | |
| DTM SS 0050 | Black - Standard Ink | 10 |
| DTM SS 0051 | Blue - Standard Ink | 10 |
| DTM SS 0052 | Red - Standard Ink | 10 |
| DTM SS 0058 | Green - Standard Ink | 10 |
| DTM SSGL 0050 | Black - Gel Ink | 10 |
| DTM SSGL 0051 | Blue - Gel Ink | 10 |
| DTM SSGL 0052 | Red - Gel Ink | 10 |
| DTM SSGL 0058 | Green - Gel Ink | 10 |
| DTM SSCR 0050 | Black - Pressurised Ink | 10 |
| DTM SSCR 0051 | Blue - Pressurised Ink | 10 |
| DTM SSFT 0050 | Black - Fine Tip Ink | 10 |
| DTM SSFT 0051 | Blue - Fine Tip Ink | 10 |
| Stainless Steel Pen | | |
| DTM SS 0040 | Black - Standard Ink | 10 |
| DTM SS 0041 | Blue - Standard Ink | 10 |
| DTM SS 0042 | Red - Standard Ink | 10 |
| DTM SS 0048 | Green - Standard Ink | 10 |
| DTM SSGL 0040 | Black - Gel Ink | 10 |
| DTM SSGL 0041 | Blue - Gel Ink | 10 |
| DTM SSGL 0042 | Red - Gel Ink | 10 |
| DTM SSGL 0048 | Green - Gel Ink | 10 |
| DTM SSCR 0040 | Black - Pressurised Ink | 10 |
| DTM SSCR 0041 | Blue - Pressurised Ink | 10 |
| DTM SSFT 0040 | Black - Fine Tip Ink | 10 |
| DTM SSFT 0041 | Blue - Fine Tip Ink | 10 |

Metal Refillable Food Factory Stick Pens

Our metal stick pen is made using 2 different types of metal to offer magnetic and metal detectable/X-Ray detectable qualities. Available with pocket clip, without pocket clip or with ring. Detectamet offer 4 types of metal refill to suit a range of requirements. Standard refill, Pressurised refill as used in our detectable 'Cryo' pen, Gel refill as used in our detectable gel pen and a Fine Tip refill as used in our detectable fine tip pen.

| CODE | DESCRIPTION | PACK QTY |
|-------------|----------------------------|----------|
| DTM 0042 | Black Standard Ink | 50 |
| DTM 0043 | Blue Standard Ink | 50 |
| DTM 0044 | Red Standard Ink | 50 |
| DTM 0045 | Green Standard Ink | 50 |
| DTM 0042 GP | Black Gel Ink | 50 |
| DTM 0043 GP | Blue Gel Ink | 50 |
| DTM 0044 GP | Red Gel Ink | 50 |
| DTM 0045 GP | Green Gel Ink | 50 |
| DTM 0042 CR | Black Pressurised Cryo Ink | 50 |
| DTM 0043 CR | Blue Pressurised Cryo Ink | 50 |
| DTM 0042 FT | Black Fine Tip Ink | 50 |
| DTM 0043 FT | Blue Fine Tip Ink | 50 |

Lanyard With Breakaway Safety Feature

The plain lanyards are available with a metal hook and is made from a 10mm woven polyester lanyard with a breakaway safety feature included as standard. The drop length of the lanyard is approx. 50cm (half of the lanyard length plus clip).

| CODE | DESCRIPTION | PACK QTY |
|----------|-------------|----------|
| DTM 0024 | Lanyard | 10 |

Detectable Mechanical Pencil

Adds a new dimension to the claims of using "all due diligence". Our Pencil would suit a whole range of other applications and environments in modern industries. The outer body being made of blue metal for visual detection. The clip, nib and top part of the pencil is made from a magnetic metal. Pencil lead 2B with soft writing 0.5mm diameter. 60mm length.

| CODE | DESCRIPTION | PACK QTY |
|----------|-------------------------------|----------|
| DTM 0017 | metal case - 0.5mm 2B | 10 |
| DTM 0018 | spare pencil leads - 0.5mm 2B | 1 10 |

Detectable Detectagrip Pen Sleeve

Stops pens and other instruments from rolling and is ergonomically designed for ease of writing or manual use! Specifically designed for the food and pharmaceutical industries and can be used as part of HACCP.

| CODE | DESCRIPTION | PACK QTY |
|------------|--|----------|
| DTM 0016 | triangular rubber - single pen sleeve | 10 |
| DTM 0016 L | triangular rubber - pen sleeve x1 metre length | 1 |

Detectable Fine Permanent Marker Pens

Using high intensity permanent ink, the fine marker refills are housed in our pen casing, this pen is a unique product. Our Fine Marker pen is suitable for writing onto labels (including all our Keyhole labels and plastic labels), CD Roms and shiny/greasy paper. Everything you would use a standard fine marker pen for!

- Store horizontally

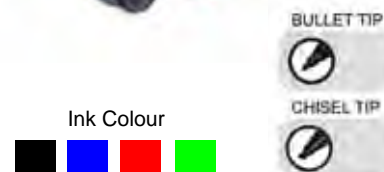
| CODE | DESCRIPTION | PACK QTY |
|------------|---|----------|
| DTMFM 0038 | fine point - black ink - nibs are 2.2 x 31.5 mm | 10 |
| DTMFM 0039 | fine point - blue ink - nibs are 2.2 x 31.5 mm | 10 |
| DTMFM 0040 | fine point - red ink - nibs are 2.2 x 31.5 mm | 10 |
| DTMFM 0041 | fine point - green ink - nibs are 2.2 x 31.5 mm | 10 |

Detectable Permanent Marker Pens

A robust non toxic permanent marker pen for bold writing on all surfaces. The refills are housed in the detectable sealed unit pen casing. Available in bullet or chisel tip.

Permanent marker pens are suitable for use in all food application environments.

| CODE | DESCRIPTION | PACK QTY |
|---------------|------------------------|----------|
| DTMMP 0029 CT | chisel tip - blue ink | 10 |
| DTMMP 0030 CT | chisel tip - black ink | 10 |
| DTMMP 0031 CT | chisel tip - red ink | 10 |
| DTMMP 0032 CT | chisel tip - green ink | 10 |
| DTMMP 0029 BT | bullet tip - blue ink | 10 |
| DTMMP 0030 BT | bullet tip - black ink | 10 |
| DTMMP 0031 BT | bullet tip - red ink | 10 |
| DTMMP 0032 BT | bullet tip - green ink | 10 |





Can be fitted with a split ring for easy attachment to safety chains/lanyards.



Housing Colour



Ink Colour



Detectable Whiteboard Marker Pens

A robust non toxic dry erase whiteboard marker pen. The refills are housed in the detectable sealed unit pen casing. Available in bullet or chisel tip.

Whiteboard marker pens are suitable for use in all food application environments.

- Store horizontally

| CODE | DESCRIPTION | PACK QTY |
|---------------|------------------------|----------|
| DTMWM 0033 CT | chisel tip - blue ink | 10 |
| DTMWM 0034 CT | chisel tip - black ink | 10 |
| DTMWM 0035 CT | chisel tip - red ink | 10 |
| DTMWM 0036 CT | chisel tip - green ink | 10 |
| DTMWM 0033 BT | bullet tip - blue ink | 10 |
| DTMWM 0034 BT | bullet tip - black ink | 10 |
| DTMWM 0035 BT | bullet tip - red ink | 10 |
| DTMWM 0036 BT | bullet tip - green ink | 10 |

Detectable Retractable Permanent Marker Pens

A robust non toxic permanent marker pen for bold writing on all surfaces. The refills are housed in the detectable retractable worldwide patented housing design. This means no cap to lose! Permanent marker pens are suitable for use in all food application environments.

| CODE | DESCRIPTION | PACK QTY |
|------------|------------------------|----------|
| DTMPM 1051 | Black Ink - Bullet Tip | 10 |
| DTMPM 1053 | Blue Ink - Bullet Tip | 10 |
| DTMPM 1055 | Red - Bullet Tip | 10 |
| DTMPM 1057 | Green - Bullet Tip | 10 |
| DTMPM 1052 | Black - Chisel Tip | 10 |
| DTMPM 1054 | Blue - Chisel Tip | 10 |
| DTMPM 1056 | Red - Chisel Tip | 10 |
| DTMPM 1058 | Green - Chisel Tip | 10 |

Detectable Retractable Whiteboard Markers

A robust non toxic dry erase whiteboard marker pen. The refills are housed in the detectable retractable worldwide patented housing design. This means no cap to lose! Whiteboard marker pens are suitable for use in all food application environments.

- Store horizontally

| CODE | DESCRIPTION | PACK QTY |
|------------|------------------------|----------|
| DTMWM 1080 | Black Ink - Bullet Tip | 10 |
| DTMWM 1082 | Blue Ink - Bullet Tip | 10 |
| DTMWM 1084 | Red - Bullet Tip | 10 |
| DTMWM 1086 | Green - Bullet Tip | 10 |
| DTMWM 1081 | Black - Chisel Tip | 10 |
| DTMWM 1083 | Blue - Chisel Tip | 10 |
| DTMWM 1085 | Red - Chisel Tip | 10 |
| DTMWM 1087 | Green - Chisel Tip | 10 |

Detectable Touch Screen Pen

The 2-in-1 detectable touch screen stylus with twist action retractable ballpoint pen is a universal stylus pen that is compatible with devices such as Android phones & tablets as well as devices with a capacitive touch screen like the iPhone & iPad. Available with Blue ink and Blue or Grey housing colour.

- Durable and responsive tip
- Helps avoid fingerprints and smudges
- Works on all capacitive touch screens.

| CODE | DESCRIPTION | PACK QTY |
|----------|-----------------------------|----------|
| DTM 0073 | Detectable Touch Screen Pen | 10 |

Detectable PDA Stylus

Touch screen personal digital assistant stylus. This is a one piece stylus - no separate parts. Made to be compatible with most PDA touchscreens (These are pen based computers made by Palm, Handspring, Hewlett Packard, Casio and others). Non scratching.

The Detectamet stylus is made of a firm but non-scratching plastic to "write" on today's very popular Personal Digital Assistants (PDAs).

| CODE | DESCRIPTION | PACK QTY |
|----------|----------------------|----------|
| DTM 0023 | Pen Style PDA Stylus | 10 |



Detectable Fluorescent Highlighters

A robust non toxic fluorescent highlighter pen suitable for paper/copy/fax. The refills are housed in the detectable sealed unit pen casing. Chisel tip only. detectable fluorescent highlighter pens are suitable for use in all food application environments.

| CODE | DESCRIPTION | PACK QTY |
|------------|---|----------|
| DTMHP 0037 | 5 colour pack - pink, blue, yellow, orange, green | 5 |



CHISEL TIP

Ink Colour



Detectable Retractable Refillable Highlighter Pens

A robust non toxic refillable fluorescent highlighter pen suitable for paper/copy/fax. The refills are housed in the detectable retractable worldwide patented housing design. This means no cap to lose! Chisel tip only. Detectable fluorescent highlighter pens are suitable for use in all food application environments. Also available as single colour packs.

| CODE | DESCRIPTION | PACK QTY |
|---------------|-------------------------|----------|
| DTMHP 0047 | Assorted Ink Colours | 5 |
| DTMHP 0047 RF | Assorted Colour Refills | 5 |



CHISEL TIP

Refillable with
refills sold separately



Detectable Marker Pen Holder

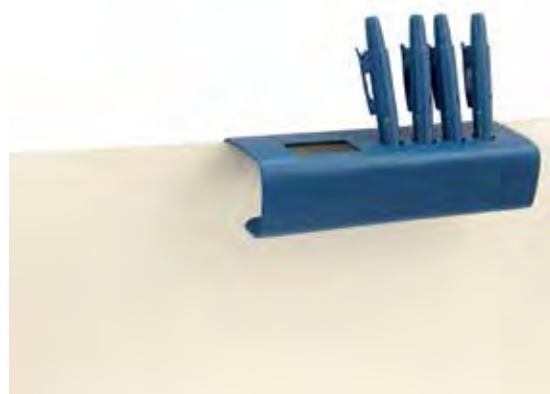
Our new marker pen holder is designed to hold up to 4 Marker Pens & has space for a Whiteboard Eraser. Suitable for Detectamet's Detectable range of Whiteboard & Permanent Marker Pens.

Available with or without a 100% Stainless Steel Clipboard Clip attached, ideal for storing papers & documents.

- Height 175mm (7")
- Width 230mm (9")
- Hook Size 55mm x 55mm x 35mm (2" x 2" x 1 1/3")
- Marker Pen Hole Diameter 20mm (3/4")
- Whiteboard Eraser Hole 50mm x 25mm (2" x 1")

| CODE | DESCRIPTION | PACK QTY |
|----------|---|----------|
| DTM 0939 | Marker Pen Holder - Without Clipboard Clip | 1 |
| DTM 0949 | Marker Pen Holder - With 100% Stainless Steel Heavy Duty Clipboard Clip | 1 |

Ink Colour





Detectable Reusable Document Fastener

We understand your dilemma of taking documents around the factory departments - no staples allowed, no paperclips allowed. The Detectamet Document Fastener is a safer way to overcome this problem.

Manufactured from Detectamet Food Safe Detectable Plastic this unique product is capable of fastening up to 200 sheets of 75gsm paper therefore eliminating the need for staples, paperclips and other potential foreign body contaminants.

| CODE | DESCRIPTION | PACK QTY |
|----------|---------------------------------------|----------|
| DTM 1008 | Reusable Detectable Document Fastener | 10 |



Detectable Stopwatches and Timers

The Detectable Electronic Timer and Stopwatches are compact and lightweight. The outer case and the buttons are made from detectable plastic and are small enough to hold in your hand in your pocket or attached to a clipboard.

| CODE | DESCRIPTION | PACK QTY |
|------------|---|----------|
| DTM 3000 B | Detectable Stopwatch - c/w safety chain | 1 |
| DTM 4000 B | Detectable Process Timer | 1 |



Detectable Desktop Calculator

This electronic desktop calculator is compact and lightweight and the plastic case is made from Detectamet's detectable plastic. It measures approximately 15cm x 12cm and offers a large number display and for gloved hands has easy to find large buttons. It incorporates standard basic button controls and automatic power off to save battery power - Battery Powered only DC1.5V(AAA)

Please note the life of your battery will depend on your working environment.

| CODE | DESCRIPTION | PACK QTY |
|------------|-------------------------------|----------|
| DTM 2100 B | Detectable Desktop Calculator | 1 |



Detectable Handheld Calculator

The Electronic hand held calculator is compact and lightweight. The plastic casing is detectable. Designed to be held in your hand/pocket or attached to a clipboard. Measures 120mm (4 1/4") x 75mm (3").

This calculator can be used with or without safety chain due to the special design. Handheld Electronic Calculator - Battery Powered only DC AG101.5V

Please note the life of your battery will depend on your working environment.

| CODE | DESCRIPTION | PACK QTY |
|------------|--|----------|
| | Detectable Handheld Calculator - Small | 1 |
| DTM 2000 B | Detectable Handheld Calculator - Large | |



Detectable Calculator Holder

Available in 2 sizes to fit both the Detectable Desktop Calculator and Detectable Handheld Calculator. The New Detectable Calculator Holder keeps calculators safe and secure when not in use, and easy to locate when needed.

Can be manufactured to include magnetic strips for easy and convenient attachment to most ferrous surfaces such as whiteboards, machines or cabinets.

- Easy to clean with drainage slots in the base of the unit
- Wall mountable or with integrated hanging hook
- Available in 8 Colours: Blue, Black, Red, Green, Yellow, White, Purple & Orange.

| CODE | DESCRIPTION | PACK QTY |
|----------|---------------------------------------|----------|
| DTM 0946 | Detectable Desktop Calculator Holder | 1 |
| DTM 0947 | Detectable Handheld Calculator Holder | 1 |



Detectable Mouse Mat

Manufactured from Food Safe Detectable Material, specifically developed for the food and pharmaceutical industries. This unique product can be used as part of HACCP. Dimensions: 210mm x 160mm x 3mm thick.

| CODE | DESCRIPTION | PACK QTY |
|----------|----------------------------|----------|
| DTM 0650 | Metal Detectable Mouse Mat | 1 |



Detectable Keyboard Stand

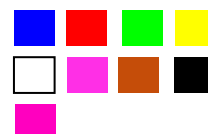
Our detectable keyboard station can be used to prevent some of the problems associated with Work-Related Upper Limb Disorder or Repetitive Strain Injury (RSI).

Manufactured from metal detectable and x-ray visible plastic suitable for use in production area environments within the food processing industry. Available in detectamet's range of 9 Detectable colours.

| CODE | DESCRIPTION | PACK QTY |
|---------|------------------------------------|----------|
| 509-P01 | Detectable Keyboard Stand - Blue | 1 |
| 509-P02 | Detectable Keyboard Stand - Black | 1 |
| 509-P03 | Detectable Keyboard Stand - Red | 1 |
| 509-P04 | Detectable Keyboard Stand - Green | 1 |
| 509-P05 | Detectable Keyboard Stand - Yellow | 1 |
| 509-P06 | Detectable Keyboard Stand - White | 1 |
| 509-P07 | Detectable Keyboard Stand - Purple | 1 |
| 509-P08 | Detectable Keyboard Stand - Orange | 1 |
| 509-P09 | Detectable Keyboard Stand - Pink | 1 |



Colours

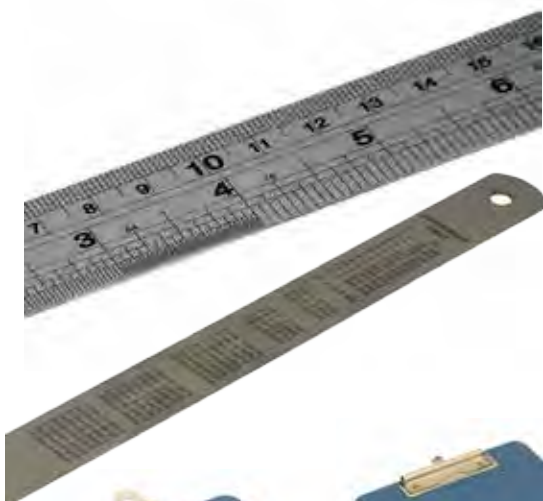


Detectable Rulers

Detectable Plastic Rulers manufactured from our food safe Detectable Plastic. Benefits Include: Metal Detectable. Available in 2 sizes: 30cm / 12" & 15cm / 6". Measurements (Imperial & Metric Scale) are moulded down either side of the ruler. Blue Colour. Bevelled Edge acts as an excellent drawing and drafting guide. Easy to clean, food safe, durable and can be used as part of HACCP.

| CODE | DESCRIPTION | PACK QTY |
|----------|------------------|----------|
| DTM 3001 | 15cm / 6" Ruler | 5 |
| DTM 3002 | 30cm / 12" Ruler | 5 |

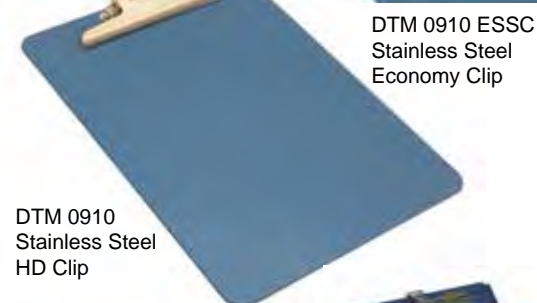




Stainless Steel Rulers

High quality metal rulers manufactured from Stainless Steel. Available in lengths of 150mm (6"), 300mm (12") & 450mm (18"). Features a conversion table on the reverse side.

| CODE | DESCRIPTION | PACK QTY |
|----------|------------------|----------|
| DTM 3101 | 15cm / 6" Ruler | 1 |
| DTM 3102 | 30cm / 12" Ruler | 1 |
| DTM 3103 | 45cm / 18" Ruler | 1 |



DTM 0910
Stainless Steel
HD Clip

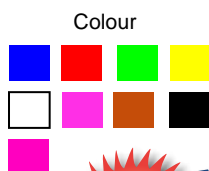
DTM 0910 ESSC
Stainless Steel
Economy Clip



DTM 0910 ECC
Zinc Plated
Economy Clip



DTM 0910 Ezc
Zinc Plated Pen
Holder Clip



**NEW
PRODUCT**



Jumbo Economy
Clip



Stainless Steel HD Clip Colours

Detectable Plastic Clipboard

Made using our unique detectable plastic polymer.

- Extremely lightweight
- Landscape or Portrait
- Ability to wipe clean
- Available with a choice of 4 clip types
- Stainless steel clip can be etched with your company details.

| CODE | DESCRIPTION | PACK QTY |
|---------------|--------------------------------------|----------|
| DTM 0922 | A3 with Stainless Steel HD Clip | 1 |
| | A3 with Jumbo Economy Clip | 1 |
| DTM 0922 ESSC | A3 with Stainless Steel Economy Clip | 1 |
| DTM 0922 ECC | A3 with Zinc Plated Economy Clip | 1 |
| DTM 0922 Ezc | A3 with Zinc Plated Pen Holder Clip | 1 |
| DTM 0910 | A4 with Stainless Steel HD Clip | 1 |
| | A4 with Jumbo Economy Clip | 1 |
| DTM 0910 ESSC | A4 with Stainless Steel Economy Clip | 1 |
| DTM 0910 ECC | A4 with Zinc Plated Economy Clip | 1 |
| DTM 0910 Ezc | A4 with Zinc Plated Pen Holder Clip | 1 |
| DTM 0923 | A5 with Stainless Steel HD Clip | 1 |
| | A5 with Jumbo Economy Clip | 1 |
| DTM 0923 ESSC | A5 with Stainless Steel Economy Clip | 1 |
| DTM 0923 ECC | A5 with Zinc Plated Economy Clip | 1 |
| DTM 0923 Ezc | A5 with Zinc Plated Pen Holder Clip | 1 |

Detectable Magnetic Clipboards

Our new range of magnetic ring binders and clipboards are very useful for presenting A4, A3 or A5 documents in portrait or landscape orientation.

The strong magnets are added to satisfy each customer's requirement so they do not slide over the surface and can stick to most ferrous surfaces such as whiteboards, metal partitions, machines or cabinets.

Magnetic ring binders and clipboards can be used when implementing visual management on the work floor.

Simply add the magnetic capability to your clip board specification when placing your order.



**NEW
PRODUCT**

Portable 'Cling Easy' Whiteboard

Detectamet are now able maximize the use of our unique range of hygienic clipboards, ring binders, lever arch files, mobile desks, memo holders etc. by applying a new and revolutionary whiteboard surface to each and every item.

- Micro-suction technology
- Cost effective
- Excellent writing performance
- Repositionable & reusable with no damage to base surfaces
- Can be laser printed
- Leaves no glue residue.

Detectamet will supply the New 'Cling Easy' Whiteboard material separately on a roll of 1000mm x 1200mm or 1000mm x 3000mm.

| CODE | DESCRIPTION | PACK QTY |
|----------|-------------------------------------|----------|
| DTM 1010 | A3 Size Clipboards - Reverse Side | 1 |
| DTM 1020 | A4 Size Clipboards - Reverse Side | 1 |
| DTM 1030 | A5 Size Clipboards - Reverse Side | 1 |
| DTM 1040 | Detectable Memo Holder - Front Face | 1 |



Detectable Scissors

General Purpose Scissors. Blades manufactured from Stainless Steel. Size: 8.5 inch / 210mm.

Food Safe Detectable Plastic Handles.

By law we cannot sell this product to any person under the age of 18.

| CODE | DESCRIPTION | PACK QTY |
|----------|-------------------------------|----------|
| DTM 1006 | Food Safe Detectable Scissors | 1 |



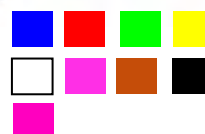
Detectable Swipe Card Holder

Swipe Card access systems are a popular and simple but effective way to control access. Generally used for commercial buildings within the food, pharmaceutical industries etc; a simple swipe or proximity card would be presented to a card reader located outside the door. When the card is read by the card reader the door will automatically unlock for a predetermined time. Available in blue, red or yellow and with or without safety chain. Other colours available on request. NEW DESIGN means can now be used as Portrait or Landscape.

| CODE | DESCRIPTION | PACK QTY |
|----------|------------------------------------|----------|
| DTM 0026 | Swipecard Holder | 25 |
| DTM 0027 | Swipecard Holder with Safety Chain | 25 |



Colour

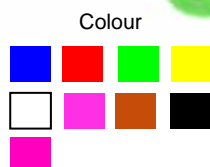




Detectable Split Ring & Safety Chain

Detectamet Stainless Steel Split ring & Chains are suitable for food applications, and anywhere a safety chain is required.
The Chain supplied as standard is 30" long and nickel free, the design of the chain will allow it to break if caught in machinery etc.
Longer lengths available on request.
The split ring is supplied as standard 20mm diam.
Suitable for use with all Detectamet pens that have a clip, Keyfobs etc

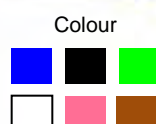
| CODE | DESCRIPTION | PACK QTY |
|----------|---|----------|
| DTM 0015 | Split Ring | 10 |
| DTM 0055 | 30" (762mm) Stainless Steel Safety Chain | 10 |
| DTM 0056 | Stainless Steel Safety Chain 1 metre length | 1 |
| DTM 0057 | Stainless Steel Connecting Clasp | 50 |



Detectable Paper Clip

Jumbo paperclip is made from detectable polymer and is suitable for a range of applications (has been used as a detectable keyfob) as well as complimenting our stapless stapler when larger quantities of paper need to be temporarily secured.

| CODE | DESCRIPTION | PACK QTY |
|----------|-------------------------------------|----------|
| DTM 1005 | 80mm x 40mm - Detectable Paper Clip | 30 |



Detectable & Non-Detectable Staple Free Stapler

Eliminate the risk of contamination caused by wayward staples. These unique products cut, fold & securely fix from 5 to 8 sheets of paper and are available in a range of colours (detectable in blue only). Contained durable unit for added contamination reduction - available in detectable or non-detectable material. Easy to use and suitable for all industries. Can be used in compliance with environmental policies.

| CODE | DESCRIPTION | PACK QTY |
|-------------|--|----------|
| DTM 1000 MD | Detectable (up to 5 sheets) - Blue | 5 |
| DTM 5000 | Handheld HD (up to 8 Sheets) - Black | 1 |
| DTM 5010 | Handheld HD (up to 8 Sheets) - Green | 1 |
| DTM 5020 | Handheld HD (up to 8 Sheets) - Light Blue | 1 |
| DTM 5030 | Handheld HD (up to 8 Sheets) - Pink | 1 |
| DTM 5040 | Handheld HD (up to 8 Sheets) - White | 1 |
| DTM 5050 | Handheld MD (up to 6 Sheets) - Light Green | 1 |
| DTM 5060 | Handheld MD (up to 6 Sheets) - Light Blue | 1 |
| DTM 5070 | Handheld MD (up to 6 Sheets) - Light Pink | 1 |
| DTM 5080 | Handheld MD (up to 6 Sheets) - Brown | 1 |
| DTM 5090 | Handheld MD (up to 6 Sheets) - White | 1 |



DTM 1000 MD



Our storage, mixing and handling equipment has been developed for food processing and similar applications. Made from metal detectable X-Ray visible polypropylene materials which are high impact resistant. Our products, equipment and materials are suitable for packaging and food contact. Our products meet the requirements of the Acts, regulations and orders applicable in Europe and the United Kingdom relating to goods supplied including, but not necessarily limited to, the following:

- **1935/2004 - Materials and Articles Intended to Come into Contact with Food**, and all subsequent amendments (and their transposition into National Law).
- **2023/2006 - Good Manufacturing Practice for Materials and Articles Intended to Contact with Food**, and all subsequent amendments (and their transposition into National Law).

Overall Migration Limits are available for the majority of our products.

STORAGE, MIXING & HANDLING EQUIPMENT INCLUDING BRUSHES & BROOMS

| | |
|----|---|
| 21 | Detectable Scrapers |
| 23 | Detectable Spatulas & Stirrers |
| 23 | Detectable Scoops |
| 24 | Detectable Jugs |
| 25 | Detectable Prover Pockets |
| 25 | Detectable Paddles & Mixers |
| 25 | Detectable Shovels |
| 26 | Detectable Buckets & Dustpans |
| 27 | Detectable Disposable Polythene Tote Bin Covers including Stainless Steel Dispensers |
| 28 | Detectable Brushes & Brooms including Fully Detectable Resin Set |
| 29 | Detectable Stretch Wrap |
| 29 | Shadow Boards |
| 29 | Detectable Hammer |
| 30 | Detectable Plastic Bag Clips |
| 30 | Detectable Rubber Bands |
| 31 | Detectable Storage Containers & Sampling Cups |

Metal Detectable Powder Scoops

Available
in 3 sizes



- ▶ Easy to Clean
- ▶ One piece construction
- ▶ Flat bottom for stability
- ▶ For scooping powders or liquids
- ▶ Made in Britain



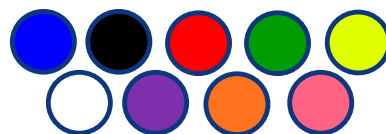
Detectable Scoops

- ▶ Tapered Edge for better handling performance
- ▶ Incorporates a slotted hole to enable the user to store hygienically in between use



Available
in 4 sizes

Available in 9
colours:



Detectable Flexible Scrapers

The products in this range are produced from specially formulated materials based on high impact food safe polypropylene and nylon. This material has the ability to be detected and rejected by typical metal detection and x-ray machines used in the food processing industry. To bring this range into line with typical colour coding systems, our metal detectable range is available in blue, red, green, yellow, white, purple, orange, black & pink. Available with Leading Edge technology for a more robust scraping edge (blue only).

| CODE | DESCRIPTION | PACK QTY |
|----------|--|----------|
| DTM 0817 | Detectable Polypropylene Flexi Scraper - Small | 5 |
| DTM 0818 | Detectable Polypropylene Flexi Scraper - Large | 5 |
| | Detectable Leading Edge Flexi Scraper - Small | 5 |
| | Detectable Leading Edge Flexi Scraper - Large | 5 |

Detectable Serrated Edge Flexible Scrapers

Produced from specially formulated materials based on high impact food safe polypropylene, the scrapers are suitable for a wide range of applications including baking, royal icing and buttercream icing. Featuring a tapered edge for creating a smooth finish and a serrated edge for creating a textured finish, our scrapers are guaranteed to help you achieve a professional result.

| CODE | DESCRIPTION | PACK QTY |
|------|-------------------------------------|----------|
| | Serrated Edge Flexi Scraper - small | 5 |
| | Serrated Edge Flexi Scraper - large | 5 |



Features serrated scraping edge



.... as well as 3 tapered scraping edges.

Scraper With Detectable Handle

The products in this range are all produced from a specially formulated material based on high impact food safe polypropylene. This material has the ability to be detected and rejected by typical metal detection and x-ray machines used in the food processing industry. The blade on these scrapers are made from stainless steel for more robust applications.

DTM 0840 Size - Blade 65mm x 120 mm, Handle 20mm x 120mm x 70mm.
DTM 0841 Size - Blade 80mm x 150 mm, Handle 50mm x 150mm x 70mm.

| CODE | DESCRIPTION | PACK QTY |
|----------|--|----------|
| DTM 0840 | flexi scraper - s/s with detectable handle | 1 |
| DTM 0841 | rigid scraper - s/s with detectable handle | 1 |

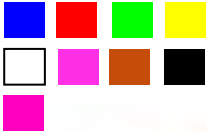
Detectable Hand Scraper

The products in this range are produced from specially formulated materials based on high impact food safe polypropylene. This material has the ability to be detected and rejected by typical metal detection and x-ray machines used in the food processing industry. Available in blue, red, green, yellow, white, purple, orange, black & pink. Available with Leading Edge technology for a more robust scraping edge (blue only).

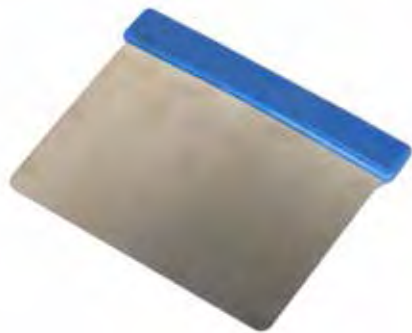
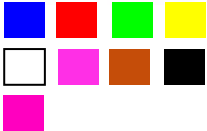
| CODE | DESCRIPTION | PACK QTY |
|----------|---|----------|
| DTM 0815 | 3" Wide Polypropylene Hand Scraper | 5 |
| DTM 0816 | 4" Wide Polypropylene Hand Scraper | 5 |
| | 3" Wide Leading Edge Hand Scraper | 5 |
| | 4" Wide Leading Edge Hand Scraper | 5 |
| DTM 0826 | 2" Wide Flexible Polypropylene Hand Scraper | 5 |



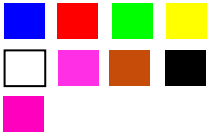
Colour



Colour



Colour





Metal Hand Scraper

Available in 3 styles and 3 sizes.

Incorporating grade 304 stainless steel blade and aluminium handle.

Incorporating grade 304 stainless steel blade and grade 304 stainless steel handle.

Incorporating brass blade and grade 304 stainless steel handle.

| CODE | DESCRIPTION | PACK QTY |
|---|-----------------------------|----------|
| stainless steel blade and aluminium handle. | | |
| DTM 0517 | Blade Size 125 X 37mm (1½") | 1 |
| DTM 0518 | Blade Size 125 X 50mm (2") | 1 |
| DTM 0519 | Blade Size 125 X 75mm (3") | 1 |
| stainless steel blade and stainless steel handle | | |
| DTM 0522 | Blade Size 125 X 37mm (1½") | 1 |
| DTM 0523 | Blade Size 125 X 50mm (2") | 1 |
| DTM 0524 | Blade Size 125 X 75mm (3") | 1 |
| brass blade and stainless steel handle | | |
| DTM 0622 | Blade Size 125 X 37mm (1½") | 1 |
| DTM 0623 | Blade Size 125 X 50mm (2") | 1 |
| DTM 0624 | Blade Size 125 X 75mm (3") | 1 |

Metal Hand Scraper With Detectable Handle

New Hygienic Food Safe Metal Blade Scrapers specifically developed for the Food and Pharmaceutical Industries, these new scrapers are available with either Stainless Steel or Brass Blades in 1.5 inch (38mm), 2 inch (50mm), 3 inch (76mm) widths. (Other Sizes Available Upon Request).

The New Detectamet Scrapers come with the added benefit of Food Safe Easy to Grip Metal Detectable Plastic Handles!

| CODE | DESCRIPTION | PACK QTY |
|----------|--|----------|
| DTM 0641 | 1.5 inch (37mm) Wide Stainless Steel Blade | 1 |
| DTM 0642 | 2 inch (50mm) Wide Stainless Steel Blade | 1 |
| DTM 0643 | 3 inch (75mm) Wide Stainless Steel Blade | 1 |
| DTM 0644 | 1.5 inch (37mm) Wide Brass Blade | 1 |
| DTM 0645 | 2 inch (50mm) Wide Brass Blade | 1 |
| DTM 0646 | 3 inch (75mm) Wide Brass Blade | 1 |

Detectable Handle Stainless Steel Gasket Scraper

High quality heavy duty detectable gasket scrapers. Ideal for gasket scraping, removal of rust, grease or other similar debris from difficult to reach areas.

Made with a stainless steel blade for extra strength, durability and long service life. The handle is easy to grip and manufactured from Detectamet's detectable plastic.

| CODE | DESCRIPTION | PACK QTY |
|----------|---|----------|
| DTM 0633 | Stainless Steel Scraper - 20mm wide blade | 1 |
| DTM 0634 | Stainless Steel Scraper - 16mm wide blade | 1 |
| DTM 0635 | Stainless Steel Scraper - 12mm wide blade | 1 |

Detectable Stainless Steel Dough Cutter

This handy tool sections dough for pie crusts and other baked favorites and cleans moist dough from your floured board. The cutting board scraper is also ideal as a flipper to lift delicate foods in the pan or from cookie sheets.

Blade dimensions: 150mm (6") x 90mm (3 1/2"). Handle diameter: 50mm (2").

| CODE | DESCRIPTION | PACK QTY |
|----------|------------------------------|----------|
| DTM 0852 | Stainless Steel Dough Cutter | 1 |

Detectable Flexible Palette Knife

The products in this range are all produced from a specially formulated material based on high impact food safe polypropylene. This material has the ability to be detected and rejected by typical metal detection and x-ray machines used in the food processing industry. Available in Blue colour only.

| CODE | DESCRIPTION | PACK QTY |
|----------|-----------------------------------|----------|
| DTM 0827 | Detectable Flexible Palette Knife | 1 |



Detectable Spatula

The products in this range are all produced from a specially formulated material based on high impact food safe polypropylene. This material has the ability to be detected and rejected by typical metal detection and x-ray machines used in the food processing industry. Available in Blue colour only.

Dimensions:

- 160mm long x 6.85mm diameter shaft
- 20mm wide blade x 0.74mm thick

| CODE | DESCRIPTION | PACK QTY |
|----------|------------------------------|----------|
| DTM 0851 | Food Safe Detectable Spatula | 10 |



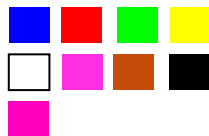
Detectable Square Scoops

The products in this range are all produced from a specially formulated material based on high impact food safe polypropylene. This material has the ability to be detected and rejected by typical metal detection and x-ray machines used in the food processing industry. Available with Leading Edge technology for a more robust scraping edge (blue only).

| CODE | DESCRIPTION | PACK QTY |
|----------|---|----------|
| DTM 0800 | mini scoop - 175g / 6.17oz L 110mm x W 85mm x D 40mm | 5 |
| DTM 0801 | small scoop - 500g / 17.63oz L 150mm x W 110mm x D 60mm | 5 |
| DTM 0802 | medium scoop - 750g / 25.45oz L 180mm x W 135mm x D 75mm | 5 |
| DTM 0803 | large scoop - 1000g / 35.27oz L 225mm x W 150mm x D 85mm | 5 |



Colour



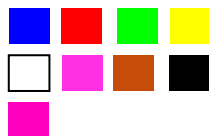
Detectable Round Scoops

The products in this range are all produced from a specially formulated material based on high impact food safe polypropylene. This material has the ability to be detected and rejected by typical metal detection and x-ray machines used in the food processing industry.

| CODE | DESCRIPTION | PACK QTY |
|----------|------------------------------------|----------|
| DTM 0804 | Round Bowl Scoop - 1000g / 35.27oz | 5 |



Colour





Detectable Flour Scoops

This scoop has clearly marked inner graduation marking for easy and accurate measurements allowing scooping of ingredients such as flour and sugar. The handle offers a sturdy, comfortable grip and has a hanging hook for easy storage.

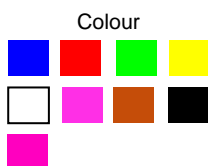
Made in Britain from Detectamet's Detectable high impact durable polypropylene plastic, each scoop has its size stamped on the handle for instant recognition. It also stacks nicely, and the flat bottom means that this scoop will sit flat on counter tops and tables when not in use.

| CODE | DESCRIPTION | PACK QTY |
|----------|--|----------|
| DTM 0940 | Small Detectable Flour Scoop (250ml / 8.8oz) L 155mm (6") x W 50mm (2") x D 40mm (1 1/2") | 5 |
| DTM 0941 | Medium Detectable Flour Scoop (500ml / 17.6oz) L 195mm (7 1/2") x W 60mm (2 1/3") x D 50mm (2") | 5 |
| DTM 0942 | Large Detectable Flour Scoop (1000ml / 35.2oz) L 245mm (9 2/3") x W 75mm (3") x D 60mm (2 1/3") | 5 |



DTM 0850
2 Litre Scooping Jug

DTM 0847 & 0848
Stackable Pouring Jug



Detectable Jugs

1 litre (1.75 pints) and 2 litre (3.5 pints) Food Safe Metal Detectable Jugs. Available in three styles to suit various applications.

A graduated Food Safe Detectable jug with 2 style of pouring lip.

- Will hold 1 litre (1.75 pints) or 2 litre (3.5 pints) of liquid.
- Graduation marking are on the inside of the jug.

A Flat sided Food Safe Detectable scooping jug.

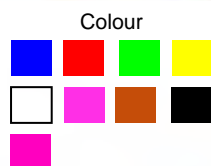
- Will hold 3.5 pints or 2 litres of liquid.
- Graduation marking are on the inside of the jug.

| CODE | DESCRIPTION | PACK QTY |
|----------|-------------------------------|----------|
| DTM 0847 | 1 Litre Stackable Pouring Jug | 1 |
| DTM 0848 | 2 Litre Stackable Pouring Jug | 1 |
| DTM 0850 | 2 Litre Scooping Jug | 1 |

Detectable Stirrers and Scrapers

The new detectable plastic stirrer with long handle and scraping edge is designed to be a tough and durable mixing tool that is easy to clean and virtually unbreakable. Available with a solid blade or with holes to suit a variety of mixing and stirring tasks. Produced from specially formulated materials based on high impact food safe polypropylene or with Leading Edge technology for a more robust scraping edge (blue only).

- Width - 40mm (1 1/2")
- Handle length - 155mm (6")
- Blade length - 260mm (10 1/4")
- Total length - 415mm (16 1/3")
- Hole size - 40mm x 20mm (1 1/2" x 3/4")



| CODE | DESCRIPTION | PACK QTY |
|----------|--|----------|
| DTM 0805 | Detectable Polypropylene Stirrer - Without Holes | 1 |
| DTM 0845 | Detectable Polypropylene Stirrer - With Holes | 1 |
| | Detectable Leading Edge Stirrer - Without Holes | 1 |
| | Detectable Leading Edge Stirrer - With Holes | 1 |



Features tapered
scraping edge

Detectable Prover Pockets

This pocket consists of a metal detectable plastic frame and a polyethelene mesh, allowing metal detectors to reject product containg broken fragments of frame. The open mesh provides excellent air permeability around the dough, and the pockets' design enhances and helps to achieve superb cleaning results.

- Dimensions: 168 x 187 x 85mm.

| CODE | DESCRIPTION | PACK QTY |
|----------|---------------------------|----------|
| DTM 0999 | Detectable Prover Pockets | 1 |



Detectable Paddles

Designed for use in a wide range of applications our paddles are effective in both liquid and solid materials, suitable for stirring food ingredients in large pots and vats. Detectamet Fully Moulded Metal Detectable One Piece Paddles are available with holes in the paddle head. Each paddle is virtually unbreakable, lightweight, easy to clean and store, has excellent wear resistance whilst reducing the risk of damage to floor surfaces and machinery.

| CODE | DESCRIPTION | PACK QTY |
|----------|-------------------------|----------|
| DTM 0813 | Large Paddle with Holes | 1 |



Detectable Long Handled Shovels

The products in this range are all produced from a specially formulated material based on high impact food safe polypropylene. This material has the ability to be detected and rejected by typical metal detection and x-ray machines used in the food processing industry. To bring this range into line with typical colour coding systems, our metal detectable shovels are available in a range of colours incorporating red, blue, green and white. Please note colour options may vary depending on style.

| CODE | DIMENSIONS (mm) | DESCRIPTION |
|----------|---|--|
| DTM 0811 | Blade: 350mm x 380mm x 90mm. Handle Length: 1040mm | Detectable D-Grip Shovel - Short Handle, Large Blade |
| DTM 0812 | Blade: 275mm x 340mm x 95mm. Handle Length: 1040mm | Detectable T-Grip Shovel - Short Handle, Small Blade |
| DTM 0806 | 242 x 264 x 478 | Detectable Hand Shovel |



Snow Scoops & Pushers

Detectamet's Heavy Duty Snow Shovel is a great tool to have to hand when faced with clearing snow from driveways and paths. The scoop is manufactured from tough durable plastic with a steel reinforced edge. Measuring 440mm wide by 400mm deep and featuring two handles on the long, robust wooden shaft makes clearing paths and driveways a doddle. Don't wait until it's white and crisp and even outside, order yours today to ensure you're not stuck in the show this winter.





Colour



Colour



Detectable Bucket With Lid

With a 12 litre capacity and a sturdy hinged lid it can be used for handling and holding liquids, powders or solid ingredient pieces. The dual detectable polymer that is used to make it has been tested and approved to meet EU and US FDA requirements for contact with food and consumable liquids.

The sturdy plastic handle and lid are firmly and safely attached but they can be removed from the bucket for storage and cleaning. The bucket can be supplied in a range of colour choices so that a stock of differently coloured buckets can each be reserved for specific tasks and thereby reduce the risk of cross contamination. Currently available in Blue & Red.

| CODE | DESCRIPTION | PACK QTY |
|----------|-------------------------------------|----------|
| DTM 0862 | 12 litre Detectable Bucket with Lid | 1 |

Detectable Buckets

The products in this range are all produced from a specially formulated material based on high impact food safe polypropylene. This material has the ability to be detected and rejected by typical metal detection and x-ray machines used in the food processing industry. the bucket is suitable for all cleaning requirements within food factories / recommend to use with Detectamet brushes and can also be used for carrying and storing food. Available in blue only.

| CODE | DESCRIPTION | PACK QTY |
|----------|----------------|----------|
| DTM 0839 | 9 Litre Bucket | 1 |

Detectable Dustpan

Ideal for use in the food industry, the new Detectable Dustpan is sturdily made with an ergonomically shaped handle to control the 300mm (12") wide pan edge. The thicker ridge behind the edge is designed to allow the rubbish to be swept into the tray and the ridge offers a barrier to reduce the risk of dirt falling back onto the floor.

| CODE | DESCRIPTION | PACK QTY |
|-----------|--------------------|----------|
| DTMDP 333 | Detectable Dustpan | 1 |

Detectable Storage Trays

- Full dispersion of detectable elements throughout the product
- Available in 2 Sizes/4 Colours
- Stackable and Non-Stackable
- Lightweight and easy to handle
- X-Ray visible
- Magnetically Detectable
- Tough and durable
- Easy to clean

| CODE | DESCRIPTION | PACK QTY |
|----------|--|----------|
| DTM 0886 | Small Stackable - 280 x 400 x 74 mm | 1 |
| DTM 0887 | Large Non-Stackable - 288 x 403 x 155 mm | 1 |

Colour



Detectable Storage Boxes

Now available with lid and secure locking clips - DTM 1227.
A versatile detectable storage box with clip fastening lid. Useful for any number of applications from holding test pieces, first aid dressings, coins and keys etc. The products in this range are all produced from a specially formulated material based on high impact food safe polypropylene. This material has the ability to be detected and rejected by typical metal detection and x-ray machines used in the food processing industry.

| CODE | DESCRIPTION | PACK QTY |
|--------------|---|----------|
| DTM 1227 | with secure locking clips - L220 x W145 x D45mm | 1 |
| DTM 1127 L B | large blue - L215 x W140 x D40mm | 1 |
| DTM 1127 L R | large red - L215 x W140 x D40mm | 1 |
| DTM 1127 S B | small blue - L164 x W103 x D30mm | 1 |
| DTM 1127 S R | small red - L164 x W103 x D30mm | 1 |



Colour



Detectable & Non-Detectable Disposable Polythene Tote Bin Covers

Our disposable plastic euro/tote bin covers easily stretch over standard 300 and 200 litre stainless steel tote bins providing a hygienic tight seal reducing the risk of product contamination.
Product can be easily identified using our colour coding disposable tote bin covers. Available in Blue, Red, Yellow & Green.

- Size: 830mm x 620mm x 38 micron.

| CODE | DESCRIPTION | PACK QTY |
|------------|--|----------|
| DTM DTC400 | Detectable Polythene Tote Bin Covers | Roll 250 |
| DTM PCB300 | Non-Detectable Polythene Tote Bin Covers | Roll 250 |



Colour



Stainless Steel Tote Bin Cover Dispenser

Made in Britain from high quality stainless steel, the tote bin cover dispenser from Detectamet is designed to accommodate a roll of 250 tote/euro bin covers.

The dispenser is wall mounted and features a latch secured and hinged lid for quick and easy refilling. A view slot on the side makes it easy to see when the roll is about to run out.

Width - 770mm (30 1/3"), Height - 220mm (8 1/2"), Depth - 220mm (8 1/2").

| CODE | DESCRIPTION | PACK QTY |
|----------|--|----------|
| 589-T198 | Stainless Steel Tote Bin Cover Dispenser | 1 |



Fully Detectable Resin Set Brushes

Our Detectable Resin-Set brushware boasts a revolutionary improvement in brush filament retention known as the Double Detainment System.

This unique approach uses both food grade stainless steel staples and a detectable anti-microbial resin to secure the tufts to the brush back. This not only prevents the accumulation of dirt and moisture in the tuft holes but also prevents the release of filaments into the food or drink processing environment.

| CODE | DESCRIPTION | PACK QTY |
|-----------|--|----------|
| DTMRS 590 | Detectable Stiff Short Handled Brush | 1 |
| DTMRS 390 | Detectable Stiff Long Handled Brush | 1 |
| DTMRS 490 | Detectable Soft Hand Brush | 1 |
| DTMRS 690 | Detectable Stiff Nail Brush | 1 |
| DTMRS 290 | Detectable Medium Flat Sweeping Broom | 1 |
| DTMSH 280 | Stainless Steel Handle with Detectable Hand Grip | 1 |
| DTMWB 270 | Detectable Wall Bracket System | 1 |



DTMRS 490



DTMRS 690



DTMRS 390

DTMRS 590



DTMRS 290



Fully Detectable Brushes and Brooms

Brushes and brooms are essential tools for processing and cleaning in the food industry and this new range significantly increases the choice of detectable brushes to satisfy a wide range of special and general tasks.

Made from Detectamet's unique plastic polymer these products are completely detectable from the bristles to the top of the handles and are safe for use in a food environment and have been manufactured to be heavy duty and long lasting.

| CODE | DESCRIPTION | DIMENSIONS (mm) |
|-----------|-------------------------------------|---------------------------|
| DTM NB356 | Nail Brush - Soft Bristles | 115x43x46 Bristles 23 |
| DTM DB357 | Dish Brush - Soft Bristles | 235x40x50 Bristles 30 |
| DTM DB358 | Dish Brush - Medium Bristles | 235x40x50 Bristles 30 |
| DTM AB365 | Small Push Broom - Soft Bristles | 340x75x115 Bristles 75 |
| DTM AB366 | Small Push Broom - Medium Bristles | 340x75x115 Bristles 75 |
| DTM PB359 | Large Push Broom - Soft Bristles | 480x80x130 Bristles 80 |
| DTM PB360 | Large Push Broom - Medium Bristles | 480x80x130 Bristles 80 |
| DTM FB362 | Small Floor Brush - Medium Bristles | 280x60x70 Bristles 28 |
| DTM FB361 | Large Floor Brush - Medium Bristles | 460x65x90 Bristles 40 |
| DTM BR363 | Cylinder Brush - Soft Bristles | 350x80 Bristles 27 |
| DTM BR364 | Cylinder Brush - Medium Bristles | 350x80 Bristles 27 |



DTM NB356
Detectable Nail Brush



Detectable Stretch Wrap

The new Detectable Stretch Wrap is a safer way of wrapping raw ingredients such as block frozen meats and fish and for bulk wrapping pallets in food warehouse storage and shipping.

To help reduce the risk of food contamination Detectamet's NEW Detectable Stretch Wrap is detectable by metal detector systems. The distinctive blue colour is an extra visual aid to identification if contamination happens.

This stretch wrap can have several general and specific food safety benefits. A wrapped pallet is less likely to be attacked by insects, or damaged by water, and is more likely to arrive as clean as when it was despatched. The wrapped pallet is more likely to be stable, especially when there is a variety of sizes, and there is less likelihood of pilfering and any deliberate damage would be easier to identify.

Detectamet's new stretch wrap tape provides producers of fresh foods, fruits, vegetables and chilled products with a pallet stabilising solution that allows for ventilation and prevents product spoilage. Unlike traditional Stretch Wrap Film, Stretch Wrap Tape does not cause fresh produce to 'sweat' beneath the film.

| CODE | DESCRIPTION | PACK QTY |
|-------------|--|----------|
| DTM DPW 400 | Detectable Stretch Wrap - 400mm x 200m x 30micron | 6 Rolls |
| DTM DPW 500 | Detectable Stretch Wrap - 500mm x 800m x 30micron | 2 Rolls |
| | Detectable Stretch Wrap Tape 50mm x 65m x 25micron | 1 Roll |



Can be used to wrap handheld devices for use in food factories



Shadow Boards

Shadow boards are widely used across most food factories for correctly storing a wide variety of equipment. A shadowboard is a significant tool for operational efficiency and provides the opportunity to have equipment where it is needed with rapid visual assessment, coupled with traceability controls.

Detectamet shadowboards are manufactured using 10mm PVC with integral stainless steel fittings and can accommodate a wide range of Detectamet products to your specific designs with regard to colour, text, logo and layout.

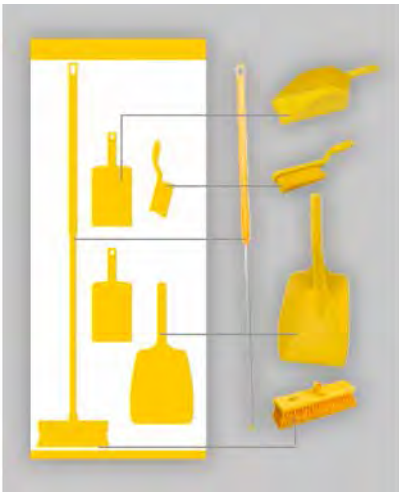
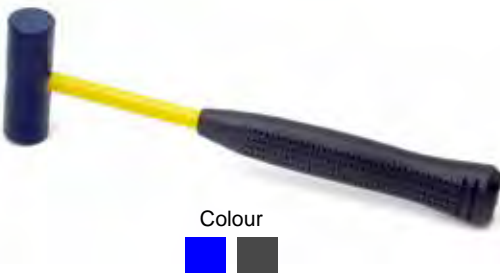
Please contact our Sales Office on Tel +44 (0) 1759 304200 or email sales@detectamet.com for more information.

Detectable Mallets

Detectable Plastic Hammer/Mallet incorporating detectable plastic head. The handle is standard plastic. The Hammer/Mallet offers high impact, durability and high abrasive resistance.

- Made in the UK to high quality standards.
- Resistant to corrosion and most chemicals.
- Will not fracture, splinter or delaminate.
- Detectamet Detectable Plastic Hammer/ Mallet head is fitted to plas handle to meet with Food Hygiene Regulations.

| CODE | DESCRIPTION | PACK QTY |
|-------------|---------------------------|----------|
| DTM 06011 | 25mm Diameter Head - Blue | 1 |
| DTM 05011/B | 50mm Diameter Head - Blue | 1 |
| DTM 07011 | 70mm Diameter Head - Blue | 1 |





Detectable Bag Gripper / Sealer

Reduce the risk of cross contamination and preserve hygienic standards by securing bag contents with this unique Food Safe Detectable Bag Gripper / Sealer.

The locking ability of the Detectable Bag / Sack Gripper will help to minimise the risk of contamination, leakage and accidents within your plant / processing area.

| CODE | DESCRIPTION | PACK QTY |
|-----------|---------------------------------|----------|
| DTM 22913 | Detectable Bag Gripper / Sealer | 5 |



Detectable Plastic Bag Clip / Closure

The NEW Detectamet Detectable Plastic Clip / Closure is fully Metal Detectable & X-Ray Visible. Durable at very low temperatures of -50°C / -58°F.

- Sealing length: 320mm - 12 1/2 inch
- Total length: 362mm - 14 5/16 inch
- Weight: 94g.

| CODE | DESCRIPTION | PACK QTY |
|-----------|---------------------|----------|
| DTM 23913 | Detectable Bag Clip | 1 |



Detectable Rubber Bands

High Quality Detectable Rubber Bands designed & developed specifically for use in the food industry. As well as being Metal Detectable & Magnetic, the NEW rubber bands are manufactured in a highly visible blue colour to aid in detection. Sold in packs of 50 (Bulk quantities also available).

More sizes coming soon and bespoke sizes and colours available on request. Please contact sales@detectamet.com for more information.

| CODE | DESCRIPTION | PACK QTY |
|----------|------------------|----------|
| DTM 0666 | 80mm x 6mm x 1mm | 50 |
| DTM 0667 | 70mm x 6mm x 1mm | 50 |
| DTM 0668 | 60mm x 6mm x 1mm | 50 |



Detectable Sampling Cups

The products in this range are all produced from a specially formulated material based on high impact food safe polypropylene. This material has the ability to be detected and rejected by typical metal detection and x-ray machines used in the food processing industry. Available in blue only.

- Dimensions: 90mm (3 1/2") high x 80mm (3 1/8") diameter
- Capacity: 350ml (11 3/4 fl oz)

| CODE | DESCRIPTION | PACK QTY |
|----------|--------------|----------|
| DTM 0111 | Sampling Cup | 1 |



Detectable Storage Containers

Manufactured from Detectamet's Detectable Plastic and available in blue.

Detectable Rectangular Container

- Dimensions: 130mm (5") x 190mm (7 1/2") x 80mm (3")
- Capacity: 1700ml (57.5 fl oz)

Detectable Square Container

- Dimensions: 115mm (4 1/2") x 115mm (4 1/2") x 75mm (3")
- Capacity: 800ml (27 fl oz)

| CODE | DESCRIPTION | PACK QTY |
|----------|----------------------------------|----------|
| DTM 0890 | Detectable Rectangular Container | 1 |
| DTM 0891 | Detectable Square Container | 1 |



Detectable Containers with Airtight Lid

Manufactured from Detectamet's Detectable Plastic and available in blue.

- Round Bowl - Depth 90mm (3 1/2"), Base Diameter 235mm (9 1/4"), Lid Diameter 305mm (12"), Capacity 4000ml (135.25 fl oz)
- Square - Depth 75mm (3"), Base Dimensions 230mm x 230mm (9" x 9"), Lid Dimensions 265mm x 265mm (10 1/2" x 10 1/2"), Capacity 2500ml (118.5 fl oz)

| CODE | DESCRIPTION | PACK QTY |
|----------|--|----------|
| DTM 0893 | Detectable Round Bowl with Detectable Airtight Lid | 1 |
| DTM 0894 | Detectable Square Container with Detectable Airtight Lid | 1 |





Blue Food Safe Metal Detectable Plasters and dressings.

We offer a wide range of Detectable plasters and dressings to suit every customers needs and budget. Electro-Magnetic Detection and visual blue plasters/dressings are ideally suited for the food industry where the necessary detection equipment is operational.

Key benefits include :-

- Hypoallergenic adhesive.
- Blue in colour to assist detection
- Sterile and individually wrapped
- Allows skin to breathe
- Micro porous structure
- Complies with Food & Hygiene regulations SI1990 & No1431
- Comprehensive Range
- Conformable
- Washproof

DETECTABLE PLASTERS

33 Metal Detectable Plasters

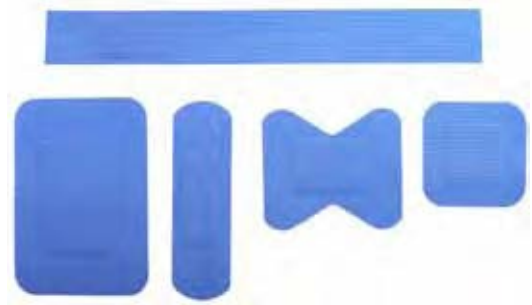
33 X-Ray Detectable Plasters

33 Detectable Storage Box

Tiritas y apósitos de metal detectables

Las tiritas se detectan electromagnética y visualmente, son ideales para su uso en la industria alimentaria, donde el equipo de detección necesario es operacional. La tira metálica colocada detrás de la almohadilla es el componente clave para la detección. Por favor, tenga en cuenta si los envases que fabrica son de aluminio, se recomienda el uso de Tiritas Rayos X.

| CÓDIGO | DESCRIPCIÓN | DE EMB |
|----------|---------------------------------------|--------|
| DTM 1101 | Tirita (azul) - 40 x 40 mm | 100 |
| DTM 1102 | Tirita (azul) - 60 x 20 mm | 100 |
| DTM 1103 | Tirita (azul) - 70 x 20 mm | 100 |
| DTM 1104 | Tirita (azul) - 75 x 25 mm | 100 |
| DTM 1105 | Tirita (azul) - 75 x 50 mm | 50 |
| DTM 1106 | Tirita para dedos 60 x 40mm | 50 |
| DTM 1107 | Tirita para nudillos 75 x 40mm | 50 |
| DTM 1108 | Tirita -160 x 20 mm | 50 |
| DTM 1120 | Estuche surtido | 100 |
| DTM 1125 | Esparadrapo no detectable (25mm x 5m) | 1 |



Tiritas y apósitos visibles Rayos X

Detección electromagnética junto con detección rayos X, apósitos son idealmente adecuados para la industria alimentaria, donde el equipo de detección necesario es operacional. Dos tipos de banda de metal que se colocan detrás de la almohadilla de fibra es el componente clave para la detección.

| CÓDIGO | DESCRIPCIÓN | DE EMB |
|----------|--------------------------------|--------|
| DTM 1111 | Tirita (azul) - 72 x 22 mm | 100 |
| DTM 1112 | Tirita (azul) - 38 x 38 mm | 100 |
| DTM 1113 | Tirita (azul) - 72 x 50 mm | 100 |
| DTM 1114 | Tirita para dedos - 50 x 44 mm | 50 |
| DTM 1115 | Estuche surtido - 5 tamaños | 95 |
| DTM 1117 | yeso billetera | 20 |



Cajas de almacenamiento detectables

Una caja de almacenamiento versátil detectable con tapa clip de sujeción. Útil para cualquier tipo de aplicaciones, desde Test de calibración, vendajes de primeros auxilios, monedas y llaves, etc. Los productos de esta gama son producidos a partir de un material especialmente formulado a base de polipropileno de alto impacto. Este material tiene la capacidad de ser detectados y rechazados por detección de metal típico y máquinas de rayos X utilizados en la industria de procesamiento de alimentos.

| CÓDIGO | DESCRIPCIÓN | DE EMB |
|--------------|------------------------------------|--------|
| DTM 1127 L B | grande azul - L215 x W140 x D40mm | 1 |
| DTM 1127 L R | rojo grande - L215 x W140 x D40mm | 1 |
| DTM 1127 S B | Pequeño azul - L164 x W103 x D30mm | 1 |
| DTM 1127 S R | rojo pequeño - L164 x W103 x D30mm | 1 |





The SK Series of Safety Knives and Cutters can offer you a wide range of knives to suit most applications. Lost or unlocated cutters in food operations can now be readily detected! All cutter bodies are made from metal detectable material, and are supplied as standard in blue. Other colours are available on certain styles.

GS Tested for Safety technology

Stainless Food Contact Approved blades

The basic criteria for a knife or cutter to be included in the Detectamet range of metal detectable safety cutters will meet with the following:

A genuine safety knife with a safety index of 4 or less (1 = bladeless, 2 = enclosed blade, 3 = fully automatic blade retraction, 4 = semi automatic blade retraction, 5 = manual blade retraction)

A knife which has a low risk of breaking into fragments with minimum parts

We can also supply the range of safety knives and cutters in standard non-detectable materials.

SAFETY KNIVES

36 Detectable Safety Knives

41 Security Cages

Detectable Auto-Retract Safety Knife

- ▶ Automatic blade retraction for safety
- ▶ The non replaceable blade is in a sealed handle for extra safety
- ▶ Simple to use and lightweight
- ▶ Fully metal detectable
- ▶ Approved for safe contact with food.



**Cuts
packaging
and wraps**



Suitable for the left or right hand



Food Safe Metal Detectable Bag Cutter



- ▶ Suitable for cutting bags, bubble wrap, strapping, tape and paper.
- ▶ Made from metal detectable plastic with a stainless steel blade.

▶ The patented opposed slopes at the back of the blade reduces friction which enables a smooth and more effective cut.



Suitable for the left or right hand





Detectable Plastic Sheet Cutter

This plastic sheet cutter offers 2 advantages. A highly simplified blade change routine plus the integrated metal slitter (removable) to cut cardboard box adhesive tapes. For trouble free work with thick plastic sheeting , leather, plastic box strapping.

- Fully Metal Detectable
- Plastic Sheet Cutter (also leather, plastic box strapping)
- Replaceable Blades
- Integrated metal slitter tool to open the blade cover
- The SK100 has a special tool to open the blade cover "preventing unauthorised access to the blade"
- Tested for Safety.



| CODE | DESCRIPTION | PACK QTY |
|-----------|--|----------|
| DTM 100 | SK100 Knife With Security Key | 1 |
| DTM 101 | SK101 Knife | 1 |
| SK 100 RB | Stainless Steel Replacement Blade | 10 |
| SK 101 TS | Stainless Steel Replacement Tape Scratcher Blade | 10 |



Detectable Retractable Blade Safety Knife

The spring loaded blade retract system is designed to respond to any uncontrolled move if and when the thumb - push slider is NOT in forward position- let go of the slider when making the cut! Easy blade change and no extra tools required - just slide the blade mount insert back.

- Fully Metal Detectable
- Replaceable Blades
- Aluminium Body
- Spring loaded blade retract
- Tested for Safety



| CODE | DESCRIPTION | PACK QTY |
|-----------|-----------------------------------|----------|
| DTM 102 | SK102 Knife | 1 |
| SK 102 RB | Stainless Steel Replacement Blade | 10 |



Detectable Disposable Retractable Blade Safety Knife

Designed to cut packaging and wraps, this is a disposable knife and must be replaced when showing any signs of wear and tear.

The non replaceable blade is in a sealed handle for extra safety (no risk of loss from internal parts). This knife is a very simple and popular lightweight knife.

This knife can be safely pocketed and can be used by both right and left handers.

- Fully metal detectable
- Automatic blade retract for safety
- Tested for safety



| CODE | DESCRIPTION | PACK QTY |
|---------|-------------|----------|
| DTM 104 | SK104 Knife | 5 |

Detectable Packaging Cutter

A disposable metal detectable knife. Made for light use. Reduce the risk of accidents through blade changing by using this fixed blade Safety Knife. Eliminate danger from loose blades accidentally falling into merchandise.

- Fully metal detectable body
- Stainless steel blade
- Pointed nose for piercing
- Hygienic and disposable Moulded-in, Carbon Steel Blades
- Shielded Blades
- No Removable Parts
- Impact resistant Metal Detectable polypropylene casing for durability.

| CODE | DESCRIPTION | PACK QTY |
|-------------|--------------------|----------|
| DTM 0301 /B | SK106 Knife Blue | 5 |
| DTM 0301 /G | SK106 Knife Green | 5 |
| DTM 0301 /R | SK106 Knife Red | 5 |
| DTM 0301 /Y | SK106 Knife Yellow | 5 |



Plastic Bags



Stretch Wrap



String

Colour



Detectable Heavy Duty Packaging Cutter

A disposable metal detectable knife. Made for heavy duty use. Reduce the risk of accidents through blade changing by using this fixed blade Safety Knife. Eliminate danger from loose blades accidentally falling into merchandise.

- Fully metal detectable body
- Stainless steel blade
- Pointed nose for piercing
- Hygienic and disposable Moulded-in, Carbon Steel Blades
- Shielded Blades
- No Removable Parts
- Impact resistant Metal Detectable polypropylene casing for durability.

| CODE | DESCRIPTION | PACK QTY |
|-------------|-------------------------------|----------|
| DTM 0304 /B | SK107 Heavy Duty Knife Blue | 5 |
| DTM 0304 /G | SK107 Heavy Duty Knife Green | 5 |
| DTM 0304 /R | SK107 Heavy Duty Knife Red | 5 |
| DTM 0304 /Y | SK107 Heavy Duty Knife Yellow | 5 |



Strapping



Bubble/Stretch Wrap



Cardboard



Bags & Sacks

Colour



Detectable Multipurpose Safety Knife

A disposable, metal detectable knife for light use. Fixed blade Safety Knife. Eliminate danger from loose blades accidentally falling into merchandise.

- Completely sealed against bacteria
- Hygienic, moulded in shielded stainless steel blades
- Pointed nose for piercing
- No removable parts
- Moulded-in, Carbon Steel Blades
- Shielded Blades
- Impact resistant metal detectable polypropylene casing for durability

| CODE | DESCRIPTION | PACK QTY |
|----------|------------------------|----------|
| DTM 0300 | SK108 Without Hook | 5 |
| DTM 0306 | SK108 With Tape Cutter | 5 |
| DTM 0332 | SK108 With Hook | 5 |



Plastic Netting



Plastic Bags



Vacuum Pack



Tape



String & Netting

Colour



Hook Blade

Available With:
Tape Cutter

None



Strapping



Vacuum Packs



Tape & Card

Also suitable for cutting: - Stretch Wrap, Bubble Wrap, String, Rope etc.

Detectable Safety Knife with Hook Blade

The SK109 has a unique patented valley, which guides the material to be cut directly along the surgical steel blade. As the valley deepens, the pressure is increased onto the blade, the cutting action is more effective, thus taking the strain off the operator and increasing overall efficiency.

The patented valley is totally unique in the field of Safety Knives.

- Fully metal detectable.
- Hook and Blade punctures & box prevents damage to goods inside.
- Unique Vari Guard. Automatic spring loaded finger guards.
- No screws Fast blade change with internal storage for new & use.

| CODE | DESCRIPTION | PACK QTY |
|-------------|--|----------|
| DTM 0302 /B | SK109 With Hook Blue | 5 |
| HBL 0302 | Stainless Steel Replacement Hook Blade | 10 |
| SBL 0302 | Stainless Steel Replacement Straight Blade | 10 |

Detectable Box Cutter

A revolutionary and unique break through in the field of Safety Knives. It is directly targeted at the most common uses for knives - Cardboard Boxes.

- Unique -Vari-Guard: Automatic Spring-Loaded Finger Guards, protect & retract when cutting
- Thumb grip for superior control
- Internal storage for new & used blades
- Blade will not break out of casing under stress
- Hook Blade punctures the box & prevents damage to goods inside.
- Straight Blade cuts conventionally with a 45degree angle.
- Only blunt edges of Hook Blade exposed. Protects fingers from sharp blade.
- Grip when wet
- No Screws - Fast blade change



CARD



STRAPPING



STRETCH WRAP

| CODE | DESCRIPTION | PACK QTY |
|----------|--|----------|
| DTM 0303 | SK111 Boxcutter | 1 |
| HBL 0303 | Carbon Replacement Hook Blade | 10 |
| SBL 0303 | Stainless Steel Replacement Straight Blade | 10 |

Detectable Box Cutter

A revolutionary and unique break through in the field of Safety Knives. It is directly targeted at the most common uses for knives - Cardboard Boxes.

- Unique -Vari-Guard: Automatic Spring-Loaded Finger Guards, protect & retract when cutting
- Thumb grip for superior control
- Internal storage for new & used blades
- Blade will not break out of casing under stress
- Hook Blade punctures the box & prevents damage to goods inside.
- Straight Blade cuts conventionally with a 45 degree angle.
- The SK112 has a special tool to open the blade cover preventing unauthorised access to the blade



CARD



STRAPPING



STRETCH WRAP

| CODE | DESCRIPTION | PACK QTY |
|----------|--|----------|
| DTM 0305 | SK112 - Blue, with security key | 1 |
| SBL 0305 | Stainless Steel Replacement Straight Blade | 10 |

Detectable Bag Cutter

The “Bag Cutter” Safety Knife is specifically designed to cut multi-layer paper or plastic bags and sacks.
Moulded In Metal Detectable Plastic and with a Stainless Steel Blade
The patented opposed slopes at the back of the blade reduces friction resistance which enables a smooth and more effective cut.

| CODE | DESCRIPTION | PACK QTY |
|----------|------------------------------|----------|
| DTM 0317 | SK116 swan bag cutter - Blue | 5 |



Detectable Safety Knife with Retractable Hook Blade

The SK117 is the latest addition to our Safety Knife range.
Moulded in Metal Detectable Plastic with Stainless Steel Blades.

- Patented ‘opposed exits’ at the back of the blade
- Spring loaded auto retractable hook blade
- Disposable
- Suitable for cutting strapping, paper, stretch and bubble wrap, tape, boxes and a variety of other packaging materials.

| CODE | DESCRIPTION | PACK QTY |
|----------------|---|----------|
| DTM 0319 /B /Y | SK117 c/w spring loaded hook - blue, yellow | 5 |



Detectable Heavy Duty Safety Knife

Larger more robust heavy duty version of SK 109.

- Replaceable blades
- 9mm mouth opening
- Tamper proof option
- Optional retracting hook
- Fast blade change and easy to clean
- Suitable for cable ties, rope, string and netting

| CODE | DESCRIPTION | PACK QTY |
|----------|--------------------------|----------|
| DTM 0320 | SK 118 Heavy duty cutter | 1 |





Detectable Safety Knife with Retractable Blade

- The blade locks in the 'out' position whilst a controlled cut is being made. If the knife is jerked, shaken or dropped, the blade will retract.
- Lock control for safe storage.
- Moulded in tough glass-filled nylon.
- Easy blade change.
- Detectable plastic blade carrier
- Easy cleaning procedure.

| CODE | DESCRIPTION | PACK QTY |
|----------|---|----------|
| DTM 0321 | SK 119 - Detectable Plastic Blade Carrier | 1 |
| DTM 0322 | SK 120 - Heavy Duty Aluminium Blade Carrier | 1 |



Lambsfoot Blade

Sheepfoot Blade



General Purpose Blade

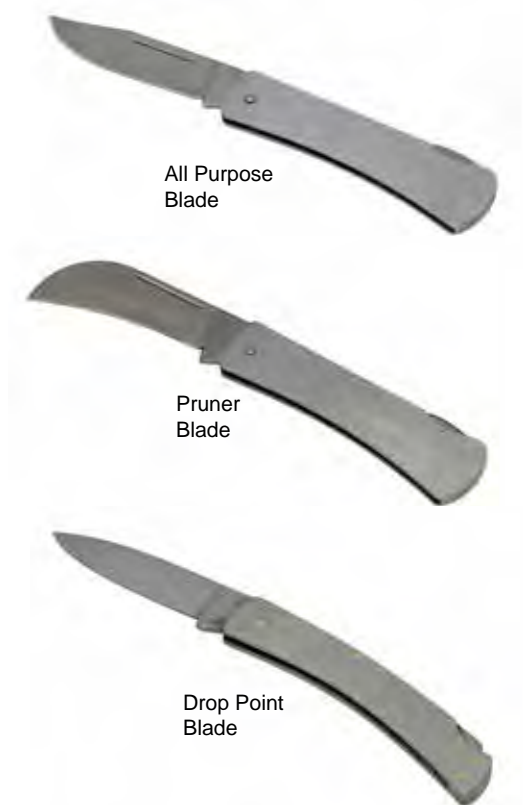
Pruner Blade

Detectable Heavy Duty Pocket Knife

The Detectamet Heavy Duty Locking Blade Pocket Knife has been designed to assist people in the Food and related industries to help them complete their work to the highest standard.

This heavy duty action knife has a strong and durable handle made from metal detectable plastic and in blue colour for high visibility.

| CODE | DESCRIPTION | PACK QTY |
|----------|--|----------|
| DTM 0333 | Detectable Heavy Duty Pocket Knife With Lambsfoot Blade | 1 |
| DTM 0334 | Detectable Heavy Duty Pocket Knife With Sheepfoot Blade | 1 |
| DTM 0335 | Detectable Heavy Duty Pocket Knife With Clip Point General Purpose Blade | 1 |
| DTM 0336 | Detectable Heavy Duty Pocket Knife With Pruner Blade | 1 |



All Purpose Blade

Pruner Blade

Drop Point Blade

Stainless Steel Locking Knives

The blade locks open for safety in use and is released by depressing the release spring in the handle. Ideal for farmers, construction workers and general purpose industrial use.

The handle has a large marking area which can be personalised.

The knife can be fitted with a shackle or a shackle and lanyard at extra cost.

Blade types available:

- 70mm all purpose
- 65mm curved pruner
- 60mm general purpose drop point

| CODE | DESCRIPTION | PACK QTY |
|----------|--|----------|
| DTM 0344 | Stainless Steel Locking Knife - 70mm All Purpose Blade | 1 |
| DTM 0347 | Stainless Steel Locking Knife - 65mm Curved Pruner Blade | 1 |
| DTM 0350 | Stainless Steel Locking Knife - 60mm Drop Point Blade | 1 |

Security Cages

Security is often of paramount importance for sensitive equipment, particularly knives and we offer Stainless Steel cages with mesh doors utilising combination (or key) padlocks for safe controls, which still provide adequate visibility.

Can be fitted with magnetic knife bars and stainless steel hanging posts to house a variety of knives and scrapers in a highly visual yet secure manner.

Please contact our Sales Office on Tel +44 (0) 1759 304200 or email sales@detectamet.com for more information.



Shadow Boards

Shadow boards are widely used across most food factories for correctly storing a wide variety of equipment. A shadowboard is a significant tool for operational efficiency and provides the opportunity to have equipment where it is needed with rapid visual assessment, coupled with traceability controls.

Our shadowboards are manufactured using 10mm PVC with integral stainless steel fittings and can accommodate a wide range of our products to your specific designs with regard to colour, text, logo and layout.





We can offer you an extensive range of Professional Knives and Accessories for use in the Catering, Food Processing and general industries worldwide. Our blades are guaranteed against defective materials and workmanship and are designed to offer long and reliable service to all professional users.

Hygiene / Handles & Blades

Our blades are made in the UK from fully hardened and tempered stainless steel and are easy to clean. Knives only require to be steered occasionally in the normal way to retain a perfect cutting edge.

Our detectable handles are insert moulded from polypropylene co-polymer to withstand rigorous sterilising and dishwasher use and do not present the potential health hazards that are frequently associated with other knives.

Tested to assess compliance with the current EC food legislation (EN) 1935/2004 on materials and articles intended to come into contact with food and repealing directives. All products come with a certificate of conformity. Migration test reports available on request.

The Regular Handle - standard, polypropylene metal detectable handle, originally designed for holding the knife safely and comfortably for long periods.



The Ergo handle - polypropylene metal detectable handle, developed for the professional user who uses knives all day, our research and development team worked with various food processing companies to develop this innovative handle, the resulting design provides the following benefits-

- Double tapered design, ergonomically designed to reduce stress to hand and wrist
- Contoured thumb platform and rounded blade back for added comfort



We recommend that a coding system is used for all Professional Knives in the range to prevent cross-contamination, tainting of food and to separate production lines in the food industry.

| HANDLE COLOUR CODING | |
|----------------------|----------------|
| RED | Raw Meat |
| BLUE | Raw Fish |
| YELLOW | Cooked Meat |
| GREEN | Salad |
| ORANGE | Fruit |
| BLACK | Vegetables |
| WHITE | Dairy Products |
| PURPLE | Free Choice |

Cook's Knife

Multi-purpose knife designed to perform well at many differing kitchen tasks.



Curved Boning Knife

The boning knife is an ideal kitchen knife for removing meat from bones. Use a curved boning knife for a better working angle when cutting close to and around the bone.



Palette Knife

A palette knife is designed for spreading a substance onto a flat surface, such as icing on a cake. It is also an ideal tool for applying spreads onto sandwiches in mass quantities.



Vegetable Knife

Designed specifically to slice, chop and trim fresh produce.



Butcher's Knife

designed and used primarily for the butchering and/or dressing of animal carcasses. The heftier blade works well for splitting, stripping and cutting meat.





Detectable Palette Knives

Palette Knives which are manufactured in the traditional way come with fully detectable handles.

The test when choosing a Palette Knife is to press the blade onto a firm surface. It should bend from the middle of the blade, not near the handle. Keep pushing the blade so it is at 90 degrees to the handle. A Palette knife in the Detectamet range has the flexibility to allow it to return to a dead straight "rest" position time and time again.

| CODE | DESCRIPTION | PACK QTY |
|-------------|---|----------|
| DTM 45P280E | Palette Knife (Flexible) 10"/25cm | 1 |
| DTM 45P282E | Palette Knife (Flexible) 12"/30cm | 1 |
| DTM 45P284E | Palette Knife (Flexible) 4"/10cm | 1 |
| DTM 45P286E | Palette Knife (Flexible) 6"/15cm | 1 |
| DTM 45P287E | Palette Knife (Flexible) 7"/18cm | 1 |
| DTM 45P288E | Palette Knife (Flexible) 8"/20cm | 1 |
| DTM 49P309E | Artist Palette Knife (Flexible) 3"/7cm | 1 |
| DTM 49P310E | Artist Palette Knife (Flexible) 4"/10cm | 1 |
| DTM 49P311E | Artist Palette Knife (Flexible) 6"/15cm | 1 |

Detectable Sharpening Steel

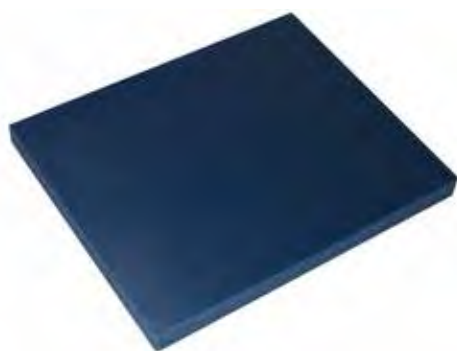
All our sharpening steels are supplied with detectable handles and magnetised hard chromed blades. Oval blades available on request.



| CODE | DESCRIPTION | PACK QTY |
|-------------|------------------------------|----------|
| DTM 61S329S | Economy Steel | 1 |
| DTM 61S452S | Diamond Blade Steel (Luxury) | 1 |
| DTM 61S402S | Diamond Blade Steel | 1 |
| DTM 62S100S | Multi-Cut Square Blade Steel | 1 |
| DTM 61S900S | Polished Blade Steel | 1 |
| DTM 62S000S | Multi-Cut Round Blade Steel | 1 |
| DTM 61S602S | Plastic Handles Steel | 1 |

Detectable Cutting / Chopping Board

Made from a metal detectable ultra high molecular weight polythene is suitable for use as a chopping/cutting board.



| CODE | DESCRIPTION | PACK QTY |
|------------|--|----------|
| DTMCB 0690 | Detectathene - blue (detectable) Cutting / Chopping Boards - Size 610x457x10mm | 1 |
| DTMCB 0691 | Detectathene - blue (detectable) Cutting / Chopping Boards - Size 610x457x50mm | 1 |

Security Cages

Security is often of paramount importance for sensitive equipment, particularly knives and we offer Stainless Steel cages with mesh doors utilising combination (or key) padlocks for safe controls, which still provide adequate visibility.

Can be fitted with magnetic knife bars and stainless steel hanging posts to house a variety of knives and scrapers in a highly visual yet secure manner.





Our products, equipment and materials are suitable for packaging and food contact. Our products meet the requirements of the Acts, regulations and orders applicable in Europe and the United Kingdom relating to goods supplied including, but not necessarily limited to, the following:

- **1935/2004 - Materials and Articles Intended to Come into Contact with Food**, and all subsequent amendments (and their transposition into National Law).
- **2023/2006 - Good Manufacturing Practice for Materials and Articles Intended to Contact with Food**, and all subsequent amendments (and their transposition into National Law).

Overall Migration Limits are available for the majority of our products.

DETECTABLE HYGIENE WORKWEAR

| | |
|----|---|
| 47 | Detectable Mobcaps & Balaclava Hoods |
| 47 | Detectable Hairnets & Hairtie |
| 48 | Multi Purpose Stainless Steel PPE Dispenser |
| 48 | Detectable Beard Snoods |
| 49 | Detectable Disposable Polythene Aprons Detectable |
| 49 | Mechanical Nitrile Work Glove Detectable Disposable |
| 50 | Food Handling Vinyl Gloves Detectable Deteca-Glove |
| 50 | Guard |
| 50 | Detectable Glove Dispensers |
| 51 | Detectable “Clean Ear” Hygienic Ear Plug System |
| 51 | Detectable Expandaband |
| 51 | Detectable Earplugs |
| 52 | Fully Detectable Sleeve Covers |
| 52 | Fully Detectable Shoe Covers |
| 52 | Shoe Cover Dispensers |
| 53 | Detectable Face Masks |
| 53 | Disinfectant & Probe Wipes including Dispensers |

Detectable Disposable Powder Free Vinyl Gloves

The patent protected range of gloves includes a detectable vinyl product designed for use in a general food handling situation and the material has been approved for food contact according to EU and USA regulations.



Available
in 4 sizes
S, M, L & XL

Detectable Disposable Filtering Facemasks

Key Features

1. High Respiratory Protection
2. Metal Detectable
3. Staple Free
4. Adjustable
5. Highly Visible
6. Comfortable

1. Metal Detectable

All the plastic fittings are made from Detectamet's metal detectable plastic (Conforms to EN 1935/2004).

- 1a. Detectable Adjusters
- 1b. Detectable Valve Mount
- 1c. Detectable Adjustable Noseband

2. Staple Free

No staples minimises risk of contamination and facial irritation.

3. High Respiratory Protection

Meets the FFP3 standard. The Detectable valve filters out at least 99% of airborne particles.

4. Adjustable

Fully adjustable straps and nose clip to ensure long term user comfort and protection.

5. Highly Visible

The fabric of this mask is made from a special high visibility blue material.



Meets the European standard:
EN149:2001+A1:2009



Meets the Australia /New Zealand standard:
AS/NZ1716:2012 P2



Meets the USA standard:
NIOSH N99



Detectable Mobcaps

We offer 2 styles of Mobcap. Our Standard Mobcap and our Premium Mobcap. Standard Mobcap - being detectable at 34645 and a light shade of blue, offering good protection and to meet budget requirements without compromising on quality.

Premium Mobcap - being more detectable at 40505 and extremely robust, ideal for those factories that are producing food products which make detection difficult due to the line settings and the packaging requirements, this Mobcap is ideal for the customer who wants a thicker hair covering for employees with long hair etc.

| CODE | DESCRIPTION | PACK QTY |
|-----------|--|----------|
| DTM 14027 | Standard Mob Caps - blue, red, white | 1000 |
| DTM 14030 | Premium Mob Caps - blue, red, white, green, yellow | 1000 |



Detectable Hairnets

Our new range of Detectable Hairnets incorporate a unique 'Fold and Hold' technology which helps to contain hair, especially important for short hair. The patent pending technology allows the hairnet to expand and contract to hold both short and long hair and is excellent for encasing long hair.

| CODE | DESCRIPTION | PACK QTY |
|----------|---|----------|
| DTM 6571 | Fine Mesh - available in blue, brown & red | 100 |
| DTM 6671 | Extra Fine Mesh - available in blue | 100 |
| DTM 2640 | Super Fine Mesh - available in blue | 25 |
| DTM 6771 | Close mesh 5mm - available in blue, red, green, brown & white | 100 |
| DTM 6871 | Course mesh 10mm - available in blue, brown & white | 100 |
| DTM 6971 | Extra close mesh 3mm - available in blue & white | 100 |



Detectable Balaclava Hoods

Full head protection can be solved with our range of Balaclava Hoods.

Our lightweight breathable balaclava hoods are made in a lightweight polyester warp knit fabric, and are available in a range of styles.

| CODE | DESCRIPTION | PACK QTY |
|---------|----------------------------|----------|
| DTM 950 | Detectable Balaclava Hoods | 10 |



Detectable Bun Nets

Our Bun Nets enclose all hair and provide an additional layer to help prevent hairs protruding through outer coverings due to the abrasion when fidgeting with headwear.

Ideal for use with our hair ties to secure long hair effectively under the bun Net and ensure maximum detectability.

| CODE | DESCRIPTION | PACK QTY |
|-------------|---------------------|----------|
| 447-P01-X09 | Detectable Bun Nets | 50 |



Detectable Hair Tie

Our NEW Detectable Hair-Ties are manufactured from blue elastic polyester yarn and stainless steel yarn for maximum detectability.



| CODE | DESCRIPTION | PACK QTY |
|----------|---------------------------|----------|
| DTM 7000 | Fully Detectable Hair Tie | 5 |

Detectable Non-Woven & Mesh Beard Snoods

We offer a wide range of metal detectable beard snoods. 2 Styles incorporating both metal clip system and aluminium foil strip system. Woven Beard Snoods – ever popular giving far greater airflow. Available in 2 mesh sizes with metal clip to give greater detectability. Non Woven Beard snoods - complete cover for larger and longer beards. Detectable by aluminium foil strip.



Colour



| CODE | DESCRIPTION | PACK QTY |
|-------------------|--------------------------------|----------|
| DTM 2884 /B /R /W | Non woven - blue, red or white | 500 |
| DTM 2876 | Close mesh - blue | 25 |
| DTM 2883 | Extra close mesh - blue | 25 |
| DTM 2983 | Fine Mesh | 25 |

Multi Purpose Stainless Steel PPE Dispenser

Multi-purpose stainless steel dispenser for the distribution of PPE items that can be free standing on a stainless steel stand. The stainless steel construction permits easy and efficient cleaning, and a vertical slot in the front face lets supervisors see when the dispenser needs refilling. Suitable for a wide range of PPE equipment including:

- Mobcaps (Approximate capacity 200)
- Hair Nets (700)
- Beard Snoods (600)
- Ear Plugs (600 pairs)
- Overshoes (600)
- Oversleeves (200).

| CODE | DESCRIPTION | PACK QTY |
|----------|---|----------|
| DTM 0275 | Stainless Steel Dispenser - with Stand | 1 |
| DTM 0285 | Stainless Steel Dispenser - Wall Mountable | 1 |
| DTM 0295 | Stainless Steel Dispenser - with Mobile Stand | 1 |



Detectable Disposable Polythene Aprons

Supplied on a roll.

- Size 70cm x 1250cm
- 100 Aprons per roll
- 10 rolls per case
- Available in blue or red colour.

| CODE | DESCRIPTION | PACK QTY |
|----------|--|----------|
| DTM 1130 | Detectable Disposable Polythene Aprons on a roll | 100 |



Colour



Detectable Food Safe Seamless Cuff Nitrile Gloves

An ideal glove which can be used in both indoor and outdoor areas. It provides mechanical power while performing work. Oil and water easily glides down the surface of the glove and also its textured surface enables wearers to clutch the smooth surfaces firmly. Cotton lined, it can be manufactured in lengths requested up to the wrist, elbow or shoulder. Durable against oil, grease and various chemicals. Suitable for work that requires protection up to the elbow or all of the arm, dye industry and sanding machine. Conforms to standards EN 1935/2004 & EN 388 (2111). Sizes available - 8,9 & 10. Lengths available - 270mm, 400mm & 600mm.

| CODE | DESCRIPTION | PACK QTY |
|------------|--|----------|
| DTM DNB 27 | Reinforced and seamless cuff, 270mm length | 1 Pair |
| DTM DNB 40 | Reinforced and seamless cuff, 400mm length | 1 Pair |
| DTM DNB 60 | Reinforced and seamless cuff, 600mm length | 1 Pair |



Detectable Food Safe Woven Cuff Nitrile Gloves

A heat proof detectable nitrile coated glove providing flexibility. Mechanical resistant and oil proof. Resistant to friction, tearing and cutting. Has superior piece clutching aspect both wet and dry pieces. Suitable for general protection, assembly, transportation, agricultural work and others. 100% cotton interlock lining.

Conforms to standards EN 1935/2004 & EN 388 (3121).

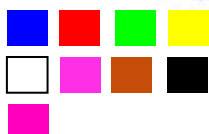
Sizes available - 7, 8, 9, 10 & 11. Length - 160mm.

| CODE | DESCRIPTION | PACK QTY |
|-------------|---------------------------------------|----------|
| DTM DNPR 16 | Woven cuffed, upper hand part coated | 1 Pair |
| DTM DNB 16 | Woven cuffed, upper hand fully coated | 1 Pair |





Colours



**NEW
PRODUCT**



Detectable Food Handling Vinyl Glove

In a world where hygiene and safety to avoid food contamination from bacterias such as E-coli are top priorities, food manufacturers can provide their employees with a glove that can also offer protection against foreign body contamination. The Detecta glove is a Powder Free Vinyl Food Service Glove and meet FFDCA(21CFR) requirements for food contact. Available in sizes Small, Medium, Large and Extra Large. Packaged 100 gloves per box.

| CODE | DESCRIPTION | PACK QTY |
|----------|----------------------------|-------------------|
| DTM 0103 | Vinyl Gloves - extra large | 10 x boxes of 100 |
| DTM 0102 | Vinyl Gloves - large | 10 x boxes of 100 |
| DTM 0101 | Vinyl Gloves - medium | 10 x boxes of 100 |
| DTM 0100 | Vinyl Gloves - small | 10 x boxes of 100 |

Detectable Detect-a-Glove Guard

The Detect-a-Glove Guard has a proven record of keeping gloves close at hand thereby reducing glove loss and helping to reduce hand injury. Made from metal detectable plastic and safety breakaway design.

| CODE | DESCRIPTION | PACK QTY |
|----------|---|----------|
| DTM 0108 | Detectable Glove Guard | 10 |
| DTM 0109 | Detectable Utility Guard with Belt Clip | 10 |

Detectable Glove Dispensers

Wall-mounted or hanging dispenser to accommodate standard size boxes of 100 disposable gloves, keeping an area tidy whilst providing easy access to gloves. Manufactured to accommodate 1, 2, 3 or 4 boxes of disposable gloves and is available in the full range of 9 hygiene colours. Blue, Black, Red, Green, Yellow, White, Purple, Orange and Pink. Also available as an enclosed unit or with an integrated hanging hook.

| CODE | DESCRIPTION | PACK QTY |
|----------|---|----------|
| DTM 0251 | Detectable Glove Dispenser - 1 box capacity | 1 |
| DTM 0252 | Detectable Glove Dispenser - 2 box capacity | 1 |
| DTM 0253 | Detectable Glove Dispenser - 3 box capacity | 1 |
| DTM 0254 | Detectable Glove Dispenser - 4 box capacity | 1 |
| DTM 0255 | Detectable Glove Dispenser with Integrated Hanging Hook | 1 |
| DTM 0265 | Detectable Glove Dispenser - Enclosed Dispenser | 1 |

Stainless Steel Glove Dispensers

Waste and contamination are just two challenges for food processing management teams unless they establish storage and dispensing systems that are easy to find and firmly fixed for straight forward access. Our new Stainless Steel Glove Dispensers help them to successfully meet these challenges. Made from high quality stainless steel they are supplied in four sizes to hold a single box of 100 gloves or up to four boxes loaded vertically. They can be screw mounted onto a wall where they will be easy to clean and sanitise.

Additional varieties include a single box dispenser that has a bar hook to hang from a pipe, bar or the top of a panel. Another option is a single box that is enclosed with a front oval exit and a small side access to allow for replacement of an empty box.

Detectable Colour Coded Hygienic ‘Clean Ear’ Ear Plug System (Developed to minimise the risk of infection through cross contamination)

The New ‘Clean Ear’ System has the unique benefit of different coloured reusable ear plugs i.e Red = Left Ear & Blue = Right Ear on either end of a cord or Expandaband (adjustable head band).

The new system also includes a unique Hygienic Storage box, the ‘Clean Ear’ storage box has been specifically designed to enhance reusable ear plug hygiene and safety. This box has clearly marked individual storage compartments for Left or Right plug, drain holes to allow air to pass through to assist in drying the plugs after washing / cleaning etc. Meeting the requirements of EN352-2 and are CE-Marked in accordance with the requirements of European Directive 89/686/EEC.

| CODE | DESCRIPTION | PACK QTY |
|------------|-----------------------------|----------|
| DTM 0219 B | Blue Cord, 2 Flange | 200 |
| DTM 0220 R | Red Cord, 2 Flange | 200 |
| DTM 0243 B | Blue Cord, 3 Flange | 200 |
| DTM 0224 R | Red Cord, 3 Flange | 200 |
| DTM 0240 B | Detectable Storage Box Blue | 25 |
| DTM 0240 R | Detectable Storage Box Red | 25 |



Colour



Detectable Expandaband

This unique product has been designed to ensure maximum comfort. The adjustable detectable pressure band allows the wearer to adjust the pressure exerted into the ear canal to suit their own comfort factor. Used with the sonar detectable earplugs 2 flange. Expandaband allows earplugs to be clear of work surfaces to avoid cross-contamination. Can be worn under the chin or behind the head. Meeting the requirements of EN352-2 and are CE-Marked in accordance with the requirements of European Directive 89/686/EEC. Colours available - Blue & Red

| CODE | DESCRIPTION | PACK QTY |
|----------|--|----------|
| DTM 0203 | Expandaband - 2 Flange | 30 |
| DTM 0204 | Expandaband - Replacement Ear Plugs 2 Flange | 200 |



Colour



Fully Detectable Reusable Sonar Earplugs Available Corded or Uncorded

Designed for maximum comfort and performance. Made from medical grade detectable silicone rubber, these plugs are the ultimate choice for the discerning user. The two flange patented design (SNR24) Patented product No. 69820878.1 and three flange (SNR24) exerts only sufficient pressure within the ear canal to ensure the required acoustic seal. Meeting the requirements of EN352-2 and are CE-Marked in accordance with the requirements of European Directive 89/686/EEC. Available in blue or red. 100% Detectable - both ear plug and cord.

| CODE | DESCRIPTION | PACK QTY |
|----------|---|----------|
| DTM 0205 | Fully Detectable Cord & Plug - 2 flange | 200 |
| DTM 0201 | Fully Detectable Cord & Plug - 3 flange | 200 |
| DTM 0244 | Detectable 3 flange blue - Uncorded | 200 |
| DTM 0245 | Detectable 3 flange red - Uncorded | 200 |
| DTM 0246 | Detectable 2 flange blue - Uncorded | 200 |
| DTM 0247 | Detectable 2 flange red - Uncorded | 200 |



Colour





Fully Detectable Disposable Earplugs

The fully detectable disposable earplugs come complete with a metal insert inside the foam plug and is available with or without a fully detectable cord. Meeting the requirements of EN352-2 and are CE-Marked in accordance with the requirements of European Directive 89/686/EEC. SNR 36dB

| CODE | DESCRIPTION | PACK QTY |
|-----------|--|----------|
| DTM 02969 | Fully Detectable Disposable Earplugs With Cord - Yellow | 200 |
| DTM 02967 | Fully Detectable Disposable Earplugs With Cord - Blue | 200 |
| DTM 02968 | Fully Detectable Disposable Earplugs Without Cord - Blue | 200 |

Earplug Dispenser Box

Blank Earplug Dispenser Box supplied in a pack of 10. Capacity holds up to 250 sets of our corded earplugs. We can 'own brand' / laser mark each box (please enquire for details / prices).

| CODE | DESCRIPTION | PACK QTY |
|----------|--|----------|
| DTM 0242 | Earplug Dispenser Box (Capacity 250 pairs) | 10 |

Fully Detectable Sleeve Covers

The new disposable sleeve protector is fully detectable because it is made from our unique metal and X-ray detectable polymer. The new hard wearing polymer completely protects the food worker with an elasticated cuff and upper arm. The blue sleeve covers measure 19cm x 38cm long and are supplied in packs of 1000. These sleeve covers have been approved for safe contact with food under the relevant EU and US FDA requirements.

| CODE | DESCRIPTION | PACK QTY |
|-------------|---------------------------------------|----------|
| 438-P01-X32 | Fully Detectable Sleeve Covers - Blue | 1000 |

Fully Detectable Shoe Covers

Trials have shown that our new disposable shoe cover material is more resilient than other plastics. By using Detectamet's unique metal and X-ray detectable polymer the whole covers are fully detectable. The blue shoe covers measure 14cm x 40cm and are in boxes of 1000 (500 pairs) and like all our products they are supplied within Detectamet's ISO 9001:2000 accredited quality management system.

| CODE | DESCRIPTION | PACK QTY |
|-------------|-------------------------------------|----------|
| 439-P01-X32 | Fully Detectable Shoe Covers - Blue | 1000 |

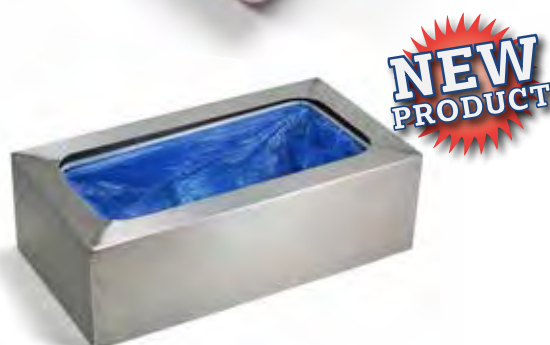
Automatic Shoe Cover Dispensers

Makes easy work of applying shoe covers hygienically before entering food production areas. Ideal for factories, hospitals, farms, veterinarians, building sites and cleanroom or laboratory environments that want to improve worker safety, compliance and eliminate cross-contamination.

Our Automatic Shoe Cover Dispenser eliminates the need for your hands to go anywhere near your shoes at all. Covering a large variety of shoe sizes while maintaining a robust and reliable structure.

Also available is a heavy duty stainless steel cover for added durability.

| CODE | DESCRIPTION | PACK QTY |
|---------|--|----------|
| | Automatic Shoe Cover Dispenser | 1 |
| 459-P49 | Stainless Steel Shoe Cover Dispenser Cover/Guard | 1 |



Detectable Disposable FFP2 & FFP3 Dust Masks

Our most popular disposable FFP masks incorporate various designs and protection factors. Comfortable effective respiratory protection against harmful and carcinogenic dusts, fumes and aerosols based on water and oil and are designed for the food industry with blue visual and detectable plastic parts.

Standards:

- EN149:2001+A1:2009 (Europe)
- NIOSH N99 (USA)
- AS/NZS1716:2012 P2 (Australia/New Zealand)

Fit testing kit available on page 77.

| CODE | DESCRIPTION | PACK QTY |
|----------|---|----------|
| DTM 4003 | FFP2 NR Valved Fold Flat Blue Detectable Mask | 10 |
| DTM 4005 | FFP3 NR Valved Blue Detectable Mask | 5 |
| DTM 4007 | FFP3 NR Valved Standard Non-Detectable Mask | 5 |



DTM 4005
Moulded FFP3

DTM 4003
Fold Flat FFP2



Disinfectant and Probe Wipes & Dispensers

These wipes use an alcohol free advanced hard surface/multi surface cleaner and sanitiser that is one of today's fastest acting and most powerful germ killing products. Within 30 seconds it can kill 99.9% of bacteria yet contains no skin irritants within its formulation. Both Detectamet's Multi-Surface Anti-Bacterial Wipes and Probe Wipes are supplied in a re-sealable container of 200 individual wipes with either a standard lid or metal detectable lid. Refill packs containing 200 wipes are available and a wall mounted storage station/dispensers can be ordered to help you keep work areas tidy and ensure that wipes are always close at hand when needed.

| CODE | DESCRIPTION | PACK QTY |
|------------|--|------------|
| DTMDW 1999 | 200mm x 200mm Disinfectant Wipes with Standard Lid | Tub of 200 |
| DTMPW 2999 | 130mm x 130mm Probe Wipes with Standard Lid | Tub of 200 |
| DTMDW 3999 | 200mm x 200mm Disinfectant Wipes with Detectable Lid | Tub of 200 |
| DTMPW 4999 | 130mm x 130mm Probe Wipes with Detectable Lid | Tub of 200 |
| DTMDW 0099 | 200mm x 200mm Disinfectant Wipes - Refill | 200 |
| DTMPW 0199 | 130mm x 130mm Probe Wipes - Refill | 200 |
| DTM 0750 | Detectable Wall Mounted Dispenser - to suit single tub of Probe wipes | 1 |
| DTM 0751 | Detectable Wall Mounted Dispenser - to suit single tub of Disinfectant wipes | 1 |
| DTM 0752 | Detectable Wall Mounted Dispenser - to suit 1x tub of Probe & 1x tub of Disinfectant wipes | 1 |

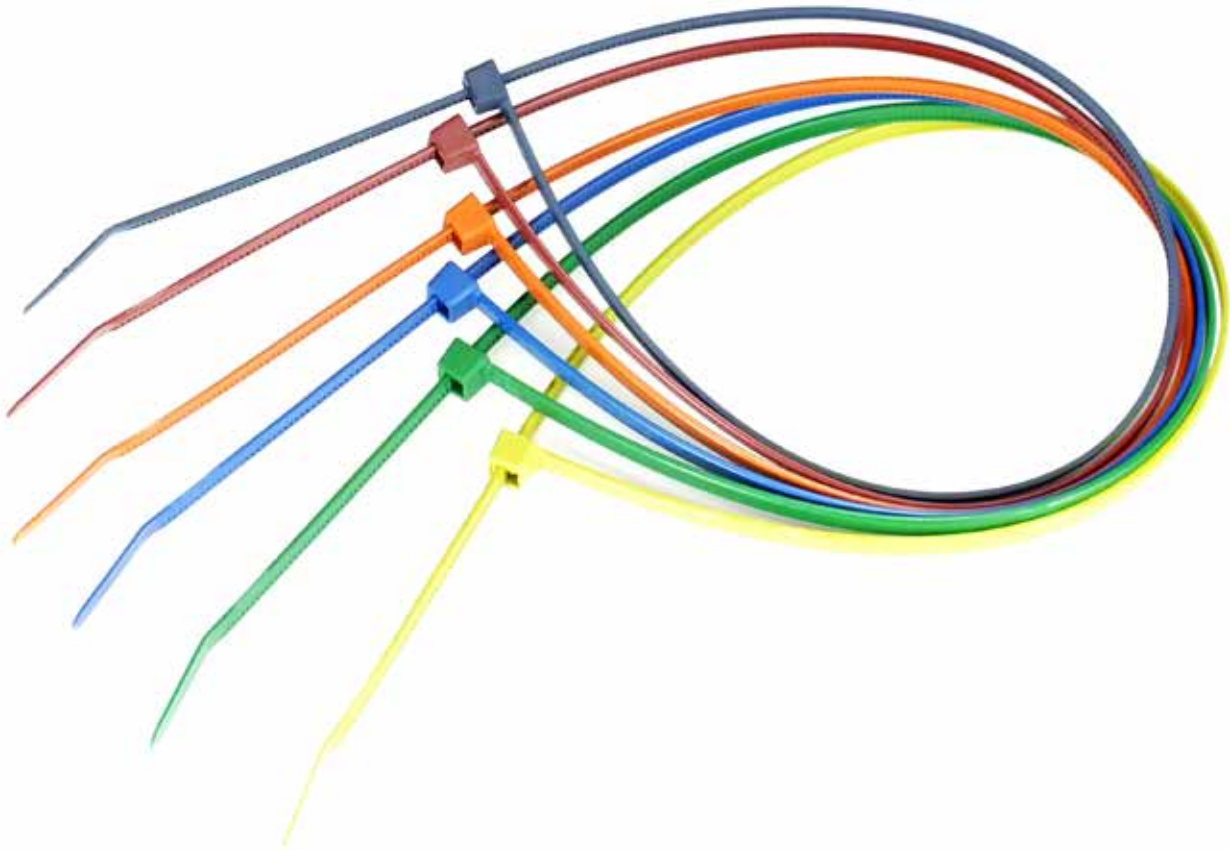


Stainless Steel Wipe Dispensers

The Wipe Dispenser Holders are designed to hold one or two tubs of wipes and can be mounted on a handy wall. These will help to keep the work areas free of clutter and further reduce the risk of mislaying the tubs and the possibility of contamination.

| CODE | DESCRIPTION | PACK QTY |
|------|---|----------|
| | Stainless Steel Wall Mounted Dispenser - to suit single tub of Probe wipes | 1 |
| | Stainless Steel Wall Mounted Dispenser - to suit single tub of Disinfectant wipes | 1 |
| | Stainless Steel Wall Mounted Dispenser - to suit 1x tub of Probe & 1x tub of Disinfectant wipes | 1 |





Specifically designed for use within the food and pharmaceutical industries. Ideal for sack and bag tying in addition to cable and other simple retaining purposes.

The range of cable ties offer feature unique and innovative features.

The Detectable Cable Ties have a metal content dispersed throughout the head and strap - so even cut-off sections can be detected.

Various sizes incorporate internal serrations allowing for a positive hold onto cable, hose and pipe bundles. The design of the head guarantees a high tensile strength whilst allowing a very low insertion force, this, combined with the bent tail design of many of the ties, ensures a simple and quick installation.

Easily installed by hand, they are suitable for the installation of cabling in and around the manufacturing process areas.

All ties are designed to make the task of fastening, bundling, clamping and managing wires easier.

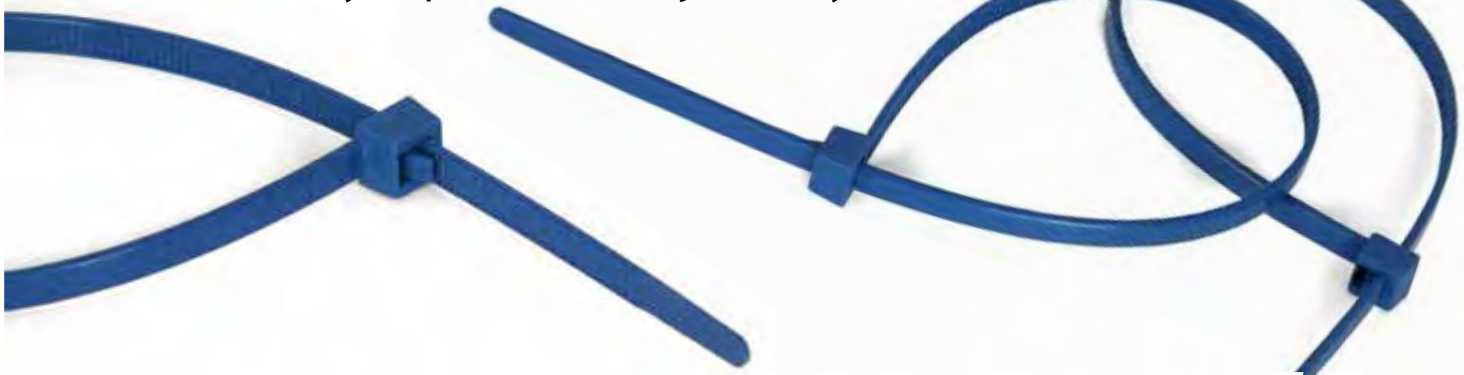
When strength, aesthetics, reliability and performance are required, our range of Metal Detectable Cable ties have all your requirements covered.

| DETECTABLE CABLE TIES | |
|-----------------------|---|
| 56 | Detectable Nylon & Polypropylene Cable Ties |
| 56 | Stainless Steel Cable Ties |
| 57 | Detectable Cable Clamps & Cable Tidy |
| 57 | Stainless Steel & Detectable Cable Tie Mounts |
| 58 | Detectable Bag Sealer / Gripper |

Detectable Reusable Releasable Ties

Specifically designed for food and pharmaceutical companies. These re-usable ties are ideal for several applications.

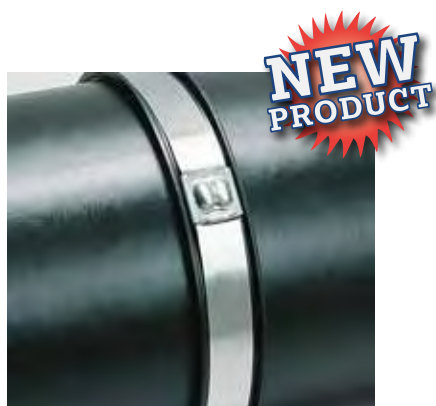
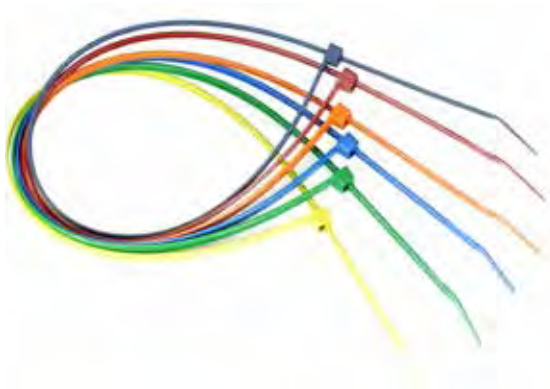
They are made from strong and durable nylon that is both metal detectable and X-ray visible to typical food industry inspection and rejection systems.



Detectable Reusable Cable Clamps

Strong, durable and manufactured from Food Safe Detectable Plastic. This detectable component is a releasable and reusable device for organising all cables, ropes, belts, wires, cords, hand tools, office and computer peripherals.





Detectable Nylon & Polypropylene Cable Ties

Specifically designed for use within the food, beverage and pharmaceutical industries. Ideal for sack and bag tying etc. Made from strong and durable nylon or polypropylene. As well as being detectable, the PP cable ties will float when dropped into liquid. An ideal tie to use in the beverage industries and relevant food environments.

| CODE | DESCRIPTION | PACK QTY |
|----------------------|--|----------|
| DTMN 01522 | 92mm x 2.4mm | 100 |
| DTMN 01531 | 145mm x 3.4mm | 100 |
| DTMN 01529 | 150mm x 3.5mm | 100 |
| DTMN 01532 | 185mm x 4.6mm | 100 |
| DTMN 01530 | 200mm x 4.6mm | 100 |
| DTMN 01533 | 380mm x 4.7mm | 100 |
| DTMN 01540 | 390mm x 7.6mm | 100 |
| DTMN 0500 /B/R/G/O/Y | 390mm x 4.6mm Blue, Red, Green, Orange, Yellow | 100 |
| DTMN 01523 | 92mm x 2.1mm - Stainless Steel Lock | 100 |
| DTMN 01525 | 186mm x 4.8mm - Stainless Steel Lock | 100 |
| DTMN 01527 | 340mm x 7.0mm - Stainless Steel Lock | 100 |
| DTMN 01528 | 360mm x 4.8mm - Stainless Steel Lock | 100 |
| DTMP 01523 | 92mm x 2.4mm - Stainless Steel Lock | 100 |
| DTMP 01535 | 186mm x 4.8mm - Stainless Steel Lock | 100 |
| DTMP 01537 | 340mm x 7.0mm - Stainless Steel Lock | 100 |
| DTMP 01538 | 360mm x 4.8mm - Stainless Steel Lock | 100 |

Detectable Reusable Nylon Cable Ties

Specifically designed for use within the food and pharmaceutical industries. Ideal for sack and bag tying etc. Made from strong and durable nylon. Now available as a release and reusable tie.

| CODE | DESCRIPTION | PACK QTY |
|------------|---------------|----------|
| DTMN 01539 | 250mm x 4.8mm | 100 |

Stainless Steel CableTies

Metal ties are ideal for all areas with requirements for high holding force, reliability and fire resistance. The range of stainless steel cable ties can be used in chemical industry and on oil platforms as well as in mass transit, shipbuilding and mining industry.

Stainless Steel Cable Ties are also suitable for machine building, apparatus construction and in the outside area of radio technology. Additionally the ties are a good solution to fix lighting in theatres and exhibition halls.

Detectable Cable Clamps

Detectable cable clamp is strong and durable, manufactured from Food Safe Detectable Plastic. This detectable component is a releasable and reusable device for organising all cables, ropes, belts, wires, cords, hand tools, office and computer peripherals.

| CODE | DESCRIPTION | PACK QTY |
|-----------|---------------------|----------|
| DTM 02912 | Small (11mm - 29mm) | 2 |
| DTM 22912 | Large (23mm - 53mm) | 2 |



Detectable Cable Tidy

This new spiral cable tidy is suitable for organising and protecting cables within industries that requires material to be detectable, such as bakery, beverage, confectionary, dairy, meat & poultry.

- Available in 4mm, 9mm & 16mm diameters
- Supplied on a 30m roll.

| CODE | DESCRIPTION | PACK QTY |
|------------|---|----------|
| DTM 449116 | Detectable Cable Tidy - 16mm diameter, 30m roll | 1 roll |
| DTM 44919 | Detectable Cable Tidy - 9mm diameter, 30m roll | 1 roll |
| DTM 44914 | Detectable Cable Tidy - 4mm diameter, 30m roll | 1 roll |



Detectable Cable Tie Mounts

Blue in colour for easy visual detection, the screw fixing mounts can be secured to any surface to hold a cable tie in place. This screw fixing element means that the product does not require any adhesive backing, removing the risk of the adhesive becoming detached from the base and entering the manufacturing process undetected.

The mounts also boast a high metal pigment, meaning that even small 'cut-off' pieces are detectable and they can be used as part of the HACCP process.

| CODE | DESCRIPTION | PACK QTY |
|------|---|----------|
| | Detectable Cable Tie Mounts 19mm x 19mm | |
| | Detectable Cable Tie Mounts 28mm x 28mm | |



Stainless Steel Cable Tie Mounts

Suitable for the secure fixing of cables, tubing, conduits and pipes within the most arduous of environments. Providing a complete fastening and fixing solution when used in conjunction with stainless steel ties up to 10.0 mm width. They are ideal for use within shipbuilding, oil and gas (offshore), industrial machinery and vehicles, food and beverage, power, renewable energy and process industries.

- 10mm slot width
- Single 4mm, 5mm or 6mm fixing hole

| CODE | DESCRIPTION | PACK QTY |
|------|--|----------|
| | Stainless Steel Cable Tie Mounts 4mm hole size | |
| | Stainless Steel Cable Tie Mounts 5mm hole size | |
| | Stainless Steel Cable Tie Mounts 6mm hole size | |





Detectable Bag Gripper / Sealer

Reduce the risk of cross contamination and preserve hygienic standards by securing bag contents with this unique Food Safe Detectable Bag Gripper / Sealer.

The locking ability of the Detectable Bag / Sack Gripper will help to minimise the risk of contamination, leakage and accidents within your plant / processing area.

| CODE | DESCRIPTION | PACK QTY |
|-----------|---------------------------------|----------|
| DTM 22913 | Detectable Bag Gripper / Sealer | 5 |



Detectable Plastic Bag Clip / Closure

The NEW Detectable Plastic Clip / Closure is fully Metal Detectable & X-Ray Visible. Durable at very low temperatures of -50°C / -58°F.

- Sealing length: 320mm - 12 1/2 inch
- Total length: 362mm - 14 5/16 inch
- Weight: 94g.

| CODE | DESCRIPTION | PACK QTY |
|-----------|---------------------|----------|
| DTM 23913 | Detectable Bag Clip | 1 |



Detectable Screw & Nail Holder

Manufactured from our Food Safe Detectable Plastic which is both Metal Detectable & X-Ray Visible.

Designed for a variety of engineering applications within the food and related industries.

- Available in three head sizes (small, medium & large)
- Length 75mm (3")
- Sold in packs of 50

| CODE | DESCRIPTION | PACK QTY |
|-----------|----------------------------|----------|
| DTM 33912 | Small - to suit panel pins | 50 |
| DTM 33913 | Medium - to suit nails | 50 |
| DTM 33914 | Large - to suit screws | 50 |





Our range of Tags allow small traces of label fragments to be detected, at any stage in the production process. As well as detecting product contamination before delivery to its customers, food / pharmaceutical company users will also be able to write production and batch information on the tags, enabling complete traceability. Additional customer specific information can also be added to our labels & tags in the range to order.

DETECTABLE KEYHOLE TAGS & LABELS

| | |
|----|--|
| 61 | Detectable Keyhole Tags |
| 61 | Stainless Steel Keyhole Tag Dispensers |
| 61 | Detectable Plastic Tags |
| 62 | Detectable Sequentially Numbered Plastic Tags |
| 62 | Detectable Traceability Tags |
| 62 | Detectable Food Industry Health & Safety Signs |
| 62 | Detectable Plastic ID Tags |

Stainless Steel Dispensers Are Just the Ticket

**NEW
PRODUCT**



*Fits large
or small
rolls of
tags*

- *Hygienic and easy to use*
- *Reduce contamination and errors*
- *Less waste and excellent life cycle cost*
- *Single and multi-roll dispensers for large or small tags*
- *304 stainless steel (316 grade by request)*
- *Holds large capacity rolls of 500 tags*
- *Pre-drilled holes for wall mounting*

- *Bespoke designs available*
- *Own branding - suitable for use with our Laser Engraver.*

Perfect for production areas, food service, shipping rooms, retail, and industrial applications anywhere an easy to use label dispenser is needed. The dispenser features a hinged lid with latches for quick and easy refilling. A fill level indicator on the side shows when the roll is close to running out.



*large
or small
tags
available*

Our Keyhole Tags are ideal for recording details of in-process batches for HACCP and Traceability management. They are detectable, durable and are heat resistant to 150°C.

Detectable Keyhole Tags

Our standard keyhole tag features heat and strength resistance with all round durability - this tag will suit 80% of applications.

Our Tag is a multi laminate material used for tags designed for the food processing environments and detectable by end of line metal detectors.

Tag Colours: Yellow, Orange, Red, White, Blue, Green and Brown

Sizes: Small (25 x 190mm) & Large (50 x 279mm)

As well as detecting any actual contamination before delivery to its customers, food / pharmaceutical companies will also be able to use the range as a vehicle to print production and batch information, enabling complete tractability. Additional information can also be added to our labels & tags in the range. High heat and steam versions available. Please contact us for details.

| CODE | DESCRIPTION | PACK QTY |
|---------------|---------------------------|----------|
| DTM 0914 T/B | Blue Small (25 x 190mm) | 500 |
| DTM 0914 T/R | Red Small (25 x 190mm) | 500 |
| DTM 0914 T/BR | Brown Small (25 x 190mm) | 500 |
| DTM 0914 T/O | Orange Small (25 x 190mm) | 500 |
| DTM 0914 T/Y | Yellow Small (25 x 190mm) | 500 |
| DTM 0914 T/G | Green Small (25 x 190mm) | 500 |
| DTM 0914 T/W | White Small (25 x 190mm) | 500 |
| DTM 0913 T/B | Blue Large (50 x 279mm) | 500 |
| DTM 0913 T/R | Red Large (50 x 279mm) | 500 |
| DTM 0913 T/BR | Brown Large (50 x 279mm) | 500 |
| DTM 0913 T/O | Orange Large (50 x 279mm) | 500 |
| DTM 0913 T/Y | Yellow Large (50 x 279mm) | 500 |
| DTM 0913 T/G | Green Large (50 x 279mm) | 500 |
| DTM 0913 T/W | White Large (50 x 279mm) | 500 |



**NEW
PRODUCT**

Stainless Steel Keyhole/Loop Tag Dispensers

Manufactured in Britain from high quality stainless steel our new Keyhole Tag Dispensers are designed and made to hold single or multiple rolls of either large or small tags.

Perfect for production areas, food service, shipping rooms, retail, and industrial applications and anywhere a simple label/tag dispenser is needed. The dispensers are wall mountable and feature a hinged lid for quick and easy refilling. A view slot on the side indicates when the roll is close to running out. Bespoke sizes and designs are available, please contact us for more details.

| CODE | DESCRIPTION | PACK QTY |
|----------|---|----------|
| 558-S176 | Stainless Steel Single Roll Large Tag Dispenser | 1 |
| 558-S177 | Stainless Steel Single Roll Small Tag Dispenser | 1 |
| 558-S178 | Stainless Steel 8 Roll Large Tag Dispenser | 1 |
| 558-S179 | Stainless Steel 8 Roll Small Tag Dispenser | 1 |

Detectable Reusable Plastic Tags

The ID tags have been developed to allow small traces of label and tag fragments to be detected & rejected at any stage of the production process. As food and pharmaceutical processing most commonly takes place across a Can be used in conjunction with our Dry-Wipe pens, Marker Pens & Fine Marker Pens!

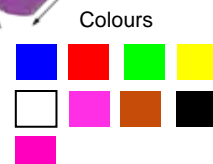
Length: 285mm (11 1/4")

Head size: 65mm (2 1/3") x 85mm (3 1/3")

| CODE | DESCRIPTION | PACK QTY |
|----------|-------------|----------|
| DTM 0925 | 265mm long | 25 |



**HOT
PRODUCT**





Sequentially Numbered Detectable Tags

Supplied as a pack of 100 tags sequentially marked 1-100. Ideal for including in your traceability systems and help create an audit trail that can be used as part of HACCP.

Sequentially numbering and marking is available for virtually all Detectamet's Detectable Plastic, Stainless Steel & Anodised Aluminium products including pens, knives, scissors, tags, scoops, scrapers and cable ties. These detectable products can then be included in your traceability systems and help create an audit trail that can be used as part of HACCP.

In addition to off-the-shelf sequential numbering we can have the tags engraved with other number sequences, letters and numbers or incorporate a logo or a company name. Length: 285mm (11 1/4"), Head size: 65mm (2 1/3") x 85mm (3 1/3")

| CODE | DESCRIPTION | PACK QTY |
|----------|--------------------------------|----------|
| DTM 1009 | 1-100 Numbered Detectable Tags | 100 |

Detectable Traceability Tags

Food / Pharmaceutical processing most commonly takes place across a number of areas in a production facility, contamination cases can often occur at any time. The detectable ID tags have been developed to allow small traces of label & tag fragments to be detected at any stage of the production process.

Can be used in conjunction with our range of Detectable Cable Ties. Available in nine colours: Blue, Red, Yellow, Green, White, Purple, Orange, Black and Pink. Size: 55mm (2 1/4") x 20mm (3/4").

| CODE | DESCRIPTION | PACK QTY |
|----------|-----------------------------|----------|
| DTM 1009 | Detectable Traceability Tag | 10 |

Detectable Food Industry Health & Safety Signs

Detectamet are able to offer a wide range of metal detectable & x-ray visible mandatory health and safety signs designed for use within the food processing industry, or where the potential for foreign body contamination is a problem.

As well as our core range of industry standard health and safety signs, we can also supply custom designs and materials including Stainless Steel & Anodised Aluminium.

- Standard designs: Wear Hairnets, Wear Face Shields, Wear Safety Boots, Wash Your Hands, Wear High Visibility Jackets, Wear A Mask, Wear Protective Clothing, Wear Ear Protectors, Wear Protective Gloves, Detectable Products Area
- Sizes available: A3, A4 & A5.

Detectable Plastic ID Tags

Manufactured from Detectamet's Detectable Plastic, the new ID tag is ideal as an identifier or where warnings are required. Available in Detectamet's full range of 8 colours for identification and colour coding.

- Small - 85mm (3 1/3") diameter x 3.2mm thick
- Large - 110mm (4 1/3") diameter x 3.2mm thick.

Suitable for laser engraving to include letters, numbers, company logos safety critical information. May also be hand marked using our range of permanent and erasable dry wipe markers.

Can be drilled to accomodate a split ring or easy attachent using a detectable cable tie.

| CODE | DESCRIPTION | PACK QTY |
|----------|--|----------|
| DTM 1011 | 85mm diameter - undrilled | 10 |
| DTM 1012 | 85mm diameter - drilled | 10 |
| DTM 1013 | 85mm diameter - drilled with split ring | 10 |
| DTM 1014 | 110mm diameter - undrilled | 10 |
| DTM 1015 | 110mm diameter - drilled | 10 |
| DTM 1016 | 110mm diameter - drilled with split ring | 10 |



We can manufacture a complete range of precision metal detector test pieces. Each calibrated test piece is colour coded for simple visual verification and fitted with a calibrated and certified bearing to ISO9002 and AFBMA Calibration.

We have developed a range of test products for X-Ray Machines which includes low, medium and high density materials acting as the medium and combining these with test contaminants of varying densities.

With our experience of producing high quality test pieces for metal and X-ray detection in the food and pharmaceutical industries we have found it increasingly beneficial to our clients to make information easily available for quality assurance purposes. All Test Pieces are supplied with a full certificate of conformity which we will keep a record of for you for 3 years.

Each Test Piece has a number etched onto its side which relates back to the Certificate of Conformity supplied by the bearing manufacturer. When our Testpieces are purchased from Detectamet our name will also be etched onto the Test Piece - allowing you or any member of staff to trace it back to us. Alternitavley we can add your company name upon request.

We can also etch extra numbers on to the Test pieces if required - to allow for individual identification purposes such as shift workers or issue numbers etc.

This ease of access coupled with a high quality manufacturing process, simple visible detection and colour coded verification makes Test pieces a very cost effective way of managing the important aspects of safety through quality control.

Used in the following Industries:

- Metal Detector Manufacturer
- Metal Detector Service Industry
- Food Processing & Food Safety
- Pharmaceutical
- Clothing/Garment Inspection
- Footwear manufacturer

METAL & X-RAY DETECTOR TEST PIECES

- 64 Metal Detector Test Pieces
- 64 X-Ray Detector Test Pieces
- 64 Test Piece Accessories



Certified Metal Detection Test Pieces

Manufactured from a variety of plastic materials including Acrylic, PVC & Polyethylene. Suitable for use with end of line, in line, throat, gravity, pipeline and conveyor metal detectors.

Standard size: 100mm (4") x 10mm (1/3") x 14mm (1/4")

Contamination ball bearings available:

- Ferrous
- Non-Ferrous
- Stainless Steel 316
- Stainless Steel 304
- Aluminium
- Glass
- Crystal Glass
- Ceramic
- Wire

| CODE | ITEM |
|----------|---|
| DTM 0311 | Standard Test Piece High vis as Standard |
| DTM 0308 | Test Puck |
| DTM 0309 | Flex Test Piece stick |
| DTM 0310 | Test Rod |
| DTM 0307 | Clear Test stick |
| DTM 0312 | Test Ball 19mm Diameter Clear As Standard |
| DTM 0316 | Test Ball 35mm Diameter Clear As Standard |
| DTM 0313 | Test Card Clear Or High Visibility |
| DTM 0325 | FDA Polyethylene Test stick White only |
| DTM 0323 | T-Bar Test Rod Clear Or High Visibility |
| DTM 1128 | Test Service Kit |

Certified X-Ray Detection Test Pieces

X-ray test pieces are transparent but with highly visual certificate numbers, ball contaminants, sizes and identification. X-ray test pieces can contain between 1 and 6 contaminants in sizes 0.3mm to 10.0mm. Our range includes low, medium and high density materials acting as the medium and combining these with test contaminants of varying densities.

Contamination ball bearings available:

- Ferrous
- Non-Ferrous
- Stainless Steel 316
- Stainless Steel 304
- Aluminium
- Glass
- Crystal Glass
- Ceramic
- Wire

| CODE | ITEM |
|----------|--|
| DTM 1133 | X-Ray Test Card. 96 x 36 x 0.50mm (excluding contaminants) |

Detectable Storage Boxes

A versatile detectable storage box with clip fastening lid. Useful for any number of applications from holding test pieces, first aid dressings, coins and keys etc. The products in this range are all produced from a specially formulated material based on high impact food safe polypropylene. This material has the ability to be detected and rejected by typical metal detection and x-ray machines used in the food processing industry.

| CODE | DESCRIPTION | PACK QTY |
|--------------|----------------------------------|----------|
| DTM 1127 L B | large blue - L215 x W140 x D40mm | 1 |
| DTM 1127 L R | large red - L215 x W140 x D40mm | 1 |
| DTM 1127 S B | small blue - L164 x W103 x D30mm | 1 |
| DTM 1127 S R | small red - L164 x W103 x D30mm | 1 |

Stainless Steel & Aluminium Products

Contents

| STAINLESS STEEL & ALUMINIUM STATIONERY | | STORAGE, MIXING & HANDLING EQUIPMENT | |
|--|---|--------------------------------------|----------------------------------|
| 68 | Anodised Aluminium Ring Binders | 76 | Balers |
| 68 | Stainless Steel Ring Binders | 76 | Bowls |
| 68 | Stainless Steel & Aluminium Lever Arch Files | 76 | Buckets |
| 68 | Stainless Steel File Holders | 76 | Buckets With Lids |
| 68 | Stainless Steel & Anodised Aluminium Hanging Clipboards | 76 | Bucket Lids |
| 69 | Anodised Aluminium Clipboards | 76 | Funnels |
| 69 | Stainless Steel Clipboards | 77 | Storage & Mixing Containers |
| 69 | Detectable Plastic Clipboards & Memo Holders | 77 | Storage & Mixing Container Lids |
| 70 | Ring Binder Clipboards | 78 | Storage & Mixing Trolleys |
| 70 | Stainless Steel Document Storage Trays | 78 | Flour Scoops |
| 70 | Flipcharts | 78 | Scoops |
| 71 | Clipboard Clips, Hanging Hooks & Ring Binder Mechanisms | 78 | Measuring Jugs |
| 71 | Stainless Steel Bulldog Clips | 78 | Pails |
| 72 | Mobile Aluminium Desk | 79 | Ladles |
| 72 | Aluminium Form Holders | 79 | Palette Knives |
| 72 | Recipe Card Holders | 79 | Scrapers |
| 74 | Food Factory Metal Stick Pens | 79 | Churns |
| 74 | Manager's Stainless Steel Retractable Pens | 79 | Storage Jars |
| | | 80 | Sieves |
| | | 80 | Whisks |
| | | 80 | Stainless Steel Wipe Dispensers |
| | | 80 | Stainless Steel Glove Dispensers |





We specialise in the design and manufacture of clipboards ring binders, lever arch files, recipe card holders with the food, pharmaceutical, health and catering industries in mind, though the products are popular and suitable for all industries and applications.

A wide range of sizes and styles are available and we can modify many designs to meet with your individual requirements.

All our products are manufactured from Anodised Aluminium and grade 304 stainless steel. Materials/Products have been inspected in accordance with our own quality arrangements. All finished products incorporate rounded edges with no sharp corners.

STAINLESS STEEL & ALUMINIUM STATIONERY

| | |
|----|---|
| 68 | Anodised Aluminium Ring Binders |
| 68 | Stainless Steel Ring Binders |
| 68 | Stainless Steel & Aluminium Lever Arch Files |
| 68 | Stainless Steel File Holders |
| 68 | Stainless Steel & Anodised Aluminium Hanging Clipboards |
| 69 | Anodised Aluminium Clipboards |
| 69 | Stainless Steel Clipboards |
| 69 | Detectable Plastic Clipboards & Memo Holders |
| 70 | Ring Binder Clipboards |
| 70 | Stainless Steel Document Storage Trays |
| 70 | Flipcharts |
| 71 | Clipboard Clips, Hanging Hooks & Ring Binder Mechanisms |
| 71 | Stainless Steel Bulldog Clips |
| 72 | Mobile Aluminium Desk |
| 72 | Aluminium Form Holders |
| 72 | Recipe Card Holders |
| 74 | Food Factory Metal Stick Pens |
| 74 | Manager's Stainless Steel Retractable Pens |

A4 Stainless Steel Stackable Document Filing Trays



- Generous capacity
- Ideal for production area environments
- Manufactured from high quality stainless steel
- Stackable or free standing

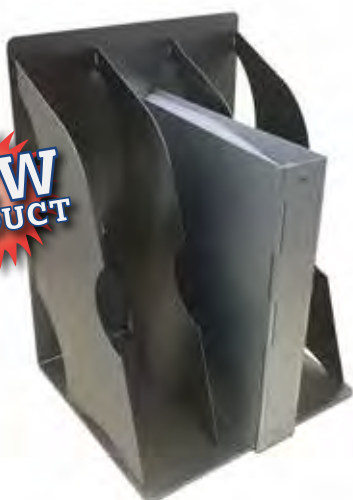
LASER Detectamet
ENGRAVING

Stainless Steel File Holders

- Manufactured from high quality hygienic grade 304 Stainless Steel
- Available in 3 sizes to accomodate either 3, 4 or 5 folders
- Available free standing for desktop storage or with keyhole points for wall mounting



Available
in 3 sizes

**HOT
PRODUCT****HOT
PRODUCT****NEW
PRODUCT**

Stainless Steel & Aluminium Ring Binders

These products have been manufactured from high quality stainless steel & aluminium, available with 2, 3 and 4 rings.

Benefits Include:

- Manufactured from top quality, stylish Anodised Aluminium or Stainless Steel.
- Ideal for production area environments or for archiving important documents.
- Heavy duty and lightweight - beneficial if used during audits and daily record taking
- Ability to wipe clean

| CODE | DESCRIPTION | PACK QTY |
|----------|-----------------------------|----------|
| DTM 0904 | A4 - Aluminium 2 ring | 1 |
| DTM 0918 | A4 - Aluminium 3 ring | 1 |
| DTM 0905 | A4 - Aluminium 4 ring | 1 |
| DTM 0915 | A3 - Aluminium 4 ring | 1 |
| DTM 0927 | A4 - Stainless Steel 2 ring | 1 |
| DTM 0928 | A4 - Stainless Steel 4 ring | 1 |
| | A3 - Stainless Steel 4 ring | 1 |

Stainless Steel & Aluminium Lever Arch Files

Exclusively by Detectamet. Manufactured from Stainless Steel and Anodised Aluminium and has been developed with food, pharmaceutical, health and catering industries in mind.

- Supplied complete with compressor bar
- Spine width - 80mm

| CODE | DESCRIPTION | PACK QTY |
|----------|----------------------------|----------|
| DTM 0930 | A4 Size Anodised Aluminium | 1 |
| DTM 0931 | A4 Size Stainless Steel | 1 |

Stainless Steel File Holders

Manufactured from high quality hygienic grade 304 Stainless Steel, Detectamet's range of ring binder and lever arch file holders are available in 3 sizes to accommodate either 3, 4 or 5 folders.

Available free standing for desktop storage or with keyhole points for wall mounting.

| CODE | DESCRIPTION | PACK QTY |
|------|-------------------------------------|----------|
| | Stainless Steel 3 Space File Holder | 1 |
| | Stainless Steel 4 Space File Holder | 1 |
| | Stainless Steel 5 Space File Holder | 1 |

Stainless Steel & Aluminium Hanging Clipboards

Hanging stainless steel or anodised aluminium clipboards with a folded or rolled top edge. Fits easily over most doors, carts or hospital beds. Clipboard hangs where you need it with the hassle of mounting hardware. These sturdy clipboards feature a variety of compact and heavy duty clips from Detectamet's range of clipboard clips.

| CODE | DESCRIPTION | PACK QTY |
|------|---|----------|
| | A4 Stainless Steel Rolled Top Clipboard | 1 |
| | A4 Stainless Steel Folded Top Clipboard | 1 |
| | A4 Aluminium Rolled Top Clipboard | 1 |
| | A4 Aluminium Folded Top Clipboard | 1 |

**NEW
PRODUCT**

A5, A4 & A3 Anodised Aluminium & Stainless Steel Clipboards

The aluminium clipboard has been developed with food, pharmaceutical, health and catering industries in mind.

Benefits Include:

- Manufactured from top quality, stylish Anodised Aluminium or heavy duty Stainless Steel.
- Ideal for production area environments or for archiving important documents.
- Heavy duty and lightweight - beneficial if used during audits and daily record taking
- Ability to wipe clean
- Available with a choice of 6 clip types (except DTM A66210)
- Stainless steel clip can be etched with your company details

| CODE | DESCRIPTION | PACK QTY |
|------------|---|----------|
| DTM 0911 | A4 Anodised Aluminium | 1 |
| DTM 0912 | A3 Anodised Aluminium | 1 |
| DTM 09129 | A5 Anodised Aluminium | 1 |
| DTM 0901 | A4 Stainless Steel | 1 |
| DTM 0907 | A3 Stainless Steel | 1 |
| DTM 09129 | A5 Stainless Steel | 1 |
| DTM A66210 | A4 LightweightAnodised Aluminium Handheld Clipboard | 1 |



Stainless Steel Wall Mounted Clip Board Holder

The new Detectamet wall mounted stainless steel clip board or file holder can be easily installed on a handy wall or partition. There are two ready to use sizes designed to take A4 or A3 sized clipboards or files. The high quality 304 grade stainless steel is of a high hygiene standard. Produced in Britain, the A4 and A3 units can be tailor made using 316 grade stainless steel and special dimension units can also be made to order.

The A4 unit measures 247mm x 243mm x 40mm (approx. 9¾" x 9½" x 1½") and will hold two or three A4 clip boards. The A3 unit will hold five or six A4 clip boards or three A3 and measures 250mm x 490mm x 40mm (approx. 9¾" x 19¼" x 1½").

| CODE | DESCRIPTION | PACK QTY |
|---------|---|----------|
| 458-S04 | A4 Stainless Steel Document/File Holder | 1 |
| 458-S03 | A3 Stainless Steel Document/File Holder | 1 |



Detectable Plastic Clipboard

Made using our unique detectable plastic polymer.

- Extremely lightweight
- Landscape or Portrait
- Ability to wipe clean
- Available with a choice of 6 clip types
- Stainless steel clip can be etched with your company details.

| CODE | DESCRIPTION | PACK QTY |
|---------------|--------------------------------------|----------|
| DTM 0922 | A3 with Stainless Steel Clip | 1 |
| DTM 0922 ESSC | A3 with Stainless Steel Economy Clip | 1 |
| DTM 0922 ECC | A3 with Chrome Plated Economy Clip | 1 |
| DTM 0922 EZC | A3 with Zinc Plated Pen Holder Clip | 1 |
| DTM 0910 | A4 with Stainless Steel Clip | 1 |
| DTM 0910 ESSC | A4 with Stainless Steel Economy Clip | 1 |
| DTM 0910 ECC | A4 with Chrome Plated Economy Clip | 1 |
| DTM 0910 EZC | A4 with Zinc Plated Pen Holder Clip | 1 |
| DTM 0923 | A5 with Stainless Steel Clip | 1 |
| DTM 0923 ESSC | A5 with Stainless Steel Economy Clip | 1 |
| DTM 0923 ECC | A5 with Chrome Plated Economy Clip | 1 |
| DTM 0923 EZC | A5 with Zinc Plated Pen Holder Clip | 1 |



Stainless Steel HD Clip Colours





A4, A3 & A5 Ring Binder Clipboards

Chrome Plated Ring Binder Rings attached to A4, A3 & A5 size clipboards manufactured from Detectable Plastic, Stainless Steel or Anodised Aluminium. Available with 2 Rings (30mm diameter rings) or 4 Rings (43mm diameter rings).

- A4 Size: 355mm (14") x 229mm (9")
- A3 Size: 457mm (18") x 355mm (14")
- A5 size available on request.

Ring Binder Mechanism available as a separate item.

Detectable Plastic Ring Binder Clipboard available in Blue, Black, Red, Green, Yellow, White, Purple and Orange.

| CODE | DESCRIPTION | PACK QTY |
|----------|--|----------|
| DPA34RLE | Detectable Plastic, 4 Ring, A3 Landscape | 1 |
| DPA32RLE | Detectable Plastic, 2 Ring, A3 Landscape | 1 |
| DPA44RLE | Detectable Plastic, 4 Ring, A4 Landscape | 1 |
| DPA43RPT | Detectable Plastic, 2 Ring, A4 Portrait | 1 |
| SSA32RLE | Stainless Steel, 2 Ring, A3 Landscape | 1 |
| SSA34RLE | Stainless Steel, 4 Ring, A3 Landscape | 1 |
| SSA42RPT | Stainless Steel, 2 Ring, A4 Portrait | 1 |
| SSA42RLE | Stainless Steel, 2 Ring, A4 Landscape | 1 |
| SSA44RLE | Stainless Steel, 4 Ring, A4 Landscape | 1 |
| SSA44RPT | Stainless Steel, 4 Ring, A4 Portrait | 1 |
| AAA32RLE | Anodised Aluminium, 2 Ring, A3 Landscape | 1 |
| AAA34RLE | Anodised Aluminium, 4 Ring, A3 Landscape | 1 |
| AAA42RPT | Anodised Aluminium, 2 Ring, A4 Portrait | 1 |
| AAA44RPT | Anodised Aluminium, 4 Ring, A4 Portrait | 1 |

Stainless Steel & Aluminium Flipcharts

Manufactured from a Robust yet Stylish and Hygienic/ Easy to Clean Stainless Steel or Anodized Aluminium complete with a Chrome Plated Ring Binder Mechanism this New Range of Detectamet Flipcharts are available in A4 & A3 Sizes in Landscape Style.

If required, we can personalize and brand to accommodate your corporate identity by laser engraving. Please contact Detectamet for pricing information and to discuss your needs.

| CODE | DESCRIPTION | PACK QTY |
|------|-----------------------|----------|
| | A4 Stainless Steel | 1 |
| | A3 Stainless Steel | 1 |
| | A4 Anodised Aluminium | 1 |
| | A3 Anodised Aluminium | 1 |

Stainless Steel Document Filing Trays

Our new stackable stainless steel A4 size in/out tray. Generous capacity ideal for printout, stationery, warehouse and mailroom environments.

The trays are stackable and the edges fit together securely so you can build an organizing station that suits your needs.

- Large bottom tray - 420mm (16 1/2") x 240mm (9 1/2") x 90mm (3 1/2")
- Standard stackable tray - 340mm (13 1/3") x 240mm (9 1/2") x 90mm (3 1/2").

| CODE | DESCRIPTION | PACK QTY |
|------|--|----------|
| | A4 Stainless Steel Large Bottom Tray | 1 |
| | A4 Stainless Steel Standard Stackable Tray | 1 |



Clipboard Clips & Hanging Hooks

We are happy to supply our range of clipboard clips and hanging hooks alone.

- Made from stainless steel or chrome plated steel
- Various styles available
- Durable and lightweight
- We can add any company logo or details to the stainless steel clips

| CODE | DESCRIPTION | PACK QTY |
|----------|--|----------|
| 310-T204 | Stainless Steel Hanging Hook - max tube diameter 1"-1¼" round, 1" square | 5 |
| 307-T185 | Stainless Steel Board Clips | 5 |
| 307-T186 | Zinc Plated Economy Board Clips - with hanging hook | 5 |
| 307-T093 | Zinc Plated Economy Board Clips - 30mm x 100mm | 5 |
| 307-T094 | Zinc Plated Economy Board Clips - 30mm x 120mm | 5 |
| 307-T187 | Stainless Steel Economy Board Clips | 5 |
| 307-T188 | Zinc Plated Pen Holder Clip | 5 |
| 308-T189 | Zinc Plated Magnetic Pen Holder | 5 |
| 307-T232 | Jumbo Chrome Plated Clipboard Clip | 5 |



307-T094
Zinc Plated
Economy Clip



307-T187
Stainless Steel
Economy Clip



307-T232
Jumbo Economy
Clipboard Clip

307-T204
Stainless Steel
Hanging Hook

307-T185
Stainless Steel
Clipboard Clip

308-T189
Zinc Plated
Magnetic Pen Holder

307-T188
Zinc Plated Pen
Holder Clip

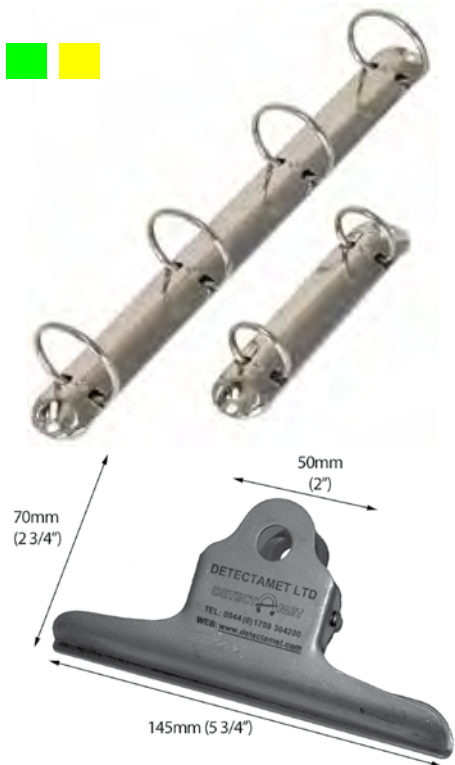
Stainless Steel HD Clip Colours

Ring Binder Mechanism

Chrome Plated Ring Binder Rings available with 2 Rings or 4 Rings.

- 2 Ring: length 130mm, 30mm diameter rings.
- 2 Ring: length 130mm, 43mm diameter rings.
- 3 Ring: length 277mm, 43mm diameter rings.
- 4 Ring: length 290mm, 43mm diameter rings.

| CODE | DESCRIPTION | PACK QTY |
|------------|---|----------|
| DTM 57840 | Ring Binder Mechanism - 2 Rings (30mm diameter) | 5 |
| DTM C57840 | Ring Binder Mechanism - 2 Rings (43mm diameter) | 5 |
| DTM 59540 | Ring Binder Mechanism - 3 Rings (30mm diameter) | 5 |
| DTM C77840 | Ring Binder Mechanism - 3 Rings (43mm diameter) | 5 |
| DTM 37840 | Ring Binder Mechanism - 4 Rings (43mm diameter) | 5 |



DTM 1200 - 145mm Stainless Steel Bulldog Clip

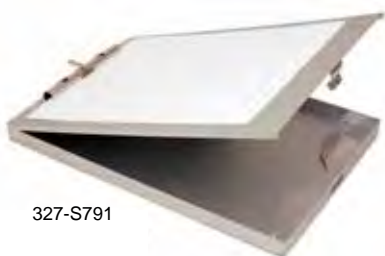
Stainless Steel Bulldog Clips

- Durable and lightweight for holding large reams of paper safely and securely.
- Made from stainless steel
- We can add any company logo or details to the clips
- Large size - 145mm (5 3/4") bar length
- Small size - 75mm (3") bar length
- Holds approximately 200 sheets of A4 80gm paper

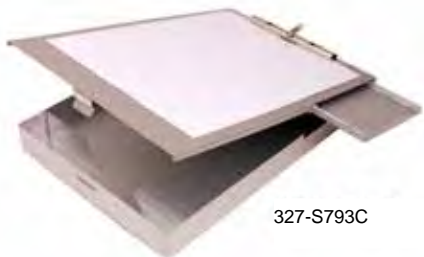
| CODE | DESCRIPTION | PACK QTY |
|----------|--|----------|
| DTM 1200 | Large - 145mm Stainless Steel Bulldog Clip | 5 |
| DTM 1300 | Small - 75mm Stainless Steel Bulldog Clip | 5 |



DTM 1300 - 75mm Stainless Steel Bulldog Clip



327-S791



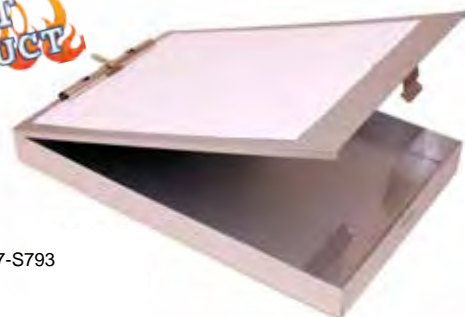
327-S793C



328-H02-S792



327-S792

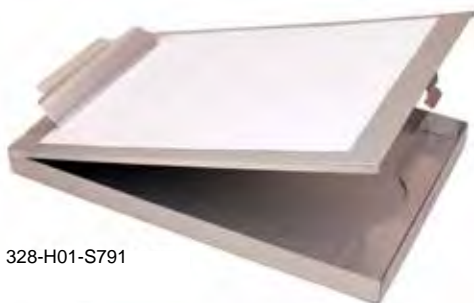


327-S793

Mobile Aluminium Desks

Separate compartment for pens and pencils. With self-locking latch to prevent contents from spilling.

| CODE | DESCRIPTION | PACK QTY |
|--------------|--|----------|
| 327-S791 | Top hinged, serrated clip - for storage space up to 9"x12"x1/2" | 1 |
| 328-H02-S792 | Right side hinged, serrated clip - for storage space up to 9"x12"x1/2" | 1 |
| 327-S792 | Left side hinged, serrated clip - for storage space up to 9"x12"x1/2" | 1 |
| 327-S793C | 1-1/4" deep storage compartment - Pull out solar calculator, serrated clip - for storage space up to 13-5/8"x9-1/4"x1-1/4" | 1 |
| 327-S793 | 1-1/4" deep storage compartment, serrated clip - for storage space up to 13-5/8"x9-1/4"x1-1/4" | 1 |



328-H01-S791



Top Hinged Aluminium Form Holder

Metal clip holds forms, separate compartment for pen and metal clasp to prevent spilling of documents.

| CODE | DESCRIPTION | PACK QTY |
|--------------|---|----------|
| 328-H01-S791 | Fits forms up to 14" x 9" x 1" (W23 x L35.5 x H2.5cm) | 1 |

Recipe Card Holder

Wall mountable recipe card/document holders designed for use in the Food & Pharmaceutical industries.

Manufactured from high quality 304 grade stainless steel or anodised aluminium & has have been engineered to be lightweight and durable for production area environments, with the added ability to wipe clean.

- Designed to hold a laminated A4 recipe card
- Dimensions: 310mm (12 1/4") x 235mm (9 1/4")

| CODE | DESCRIPTION | PACK QTY |
|----------|---------------------------------------|----------|
| DTM 0906 | Stainless Steel Recipe Card Holder | 1 |
| DTM 0926 | Anodised Aluminium Recipe Card Holder | 1 |

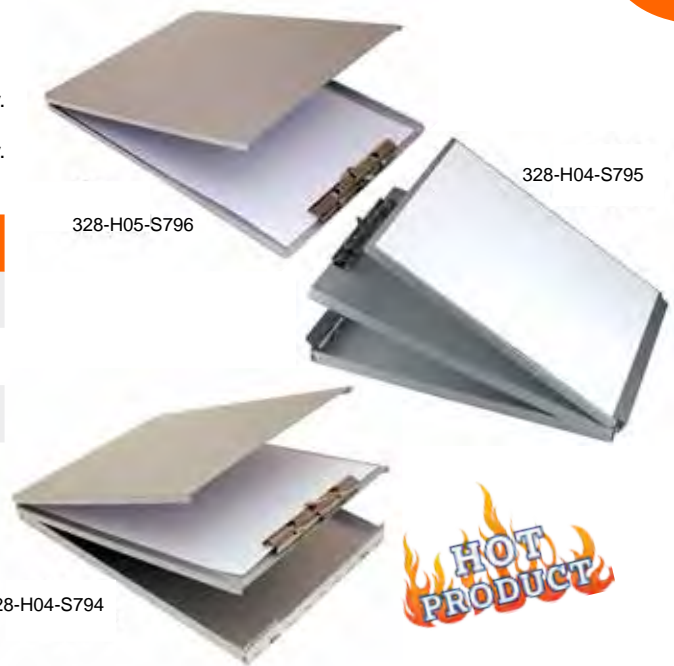
Bottom Hinged Aluminium Form Holder

DTM A79740 - Slim type for keeping A4 sized papers. Serrated clip.

DTM A38740 - Two compartments for holding and storing sheets separately. Serrated clip.

DTM A68740 - Two compartments for holding and storing sheets separately. Serrated clip.

| CODE | DESCRIPTION | PACK QTY |
|--------------|--|----------|
| 328-H05-S796 | Fits forms up to 12-7/16"x9-1/4"x3/4" (L31.5 x W23.3 x H1.5cm) | 1 |
| 328-H04-S794 | Fits forms up to 12-1/4"x8-7/8"x1/2" (L31 x W22.6 x H1.27cm) | 1 |
| 328-H04-S795 | Fits forms up to 9-7/8"x5-7/8"x9/16" (L25 x W15 x H1.5cm) | 1 |



Side Hinged Aluminium Form Holder

Forms can be stored or clipped inside the holder. A plate inserted for smooth writing.

| CODE | DESCRIPTION | PACK QTY |
|--------------|---|----------|
| 328-H03-S797 | Fits forms up to 10-1/4"x6"x3/4" (L26 x W5.3 x H2.2cm) | 1 |
| 328-H03-S798 | Fits forms up to 12-5/8"x8-5/8"x3/4" (L32 x W22 x H2.2cm) | 1 |
| 328-H03-S799 | Fits forms up to 14-5/8"x8-5/8"x3/4" (L37.3 x W22 x H2.3cm) | 1 |



Aluminium Recipe Card Holder

Chart holder made from heavy duty formed aluminium. Can be hung on office panels or partition walls.

- Thickness 1.5mm
- Dimensions W310 x H220mm
- Loading capacity 24mm
- Hanging hook diameter 46mm

| CODE | DESCRIPTION | PACK QTY |
|-------------|---------------------------------|----------|
| 326-O12-H09 | Recipe Card Holder - horizontal | 1 |
| 326-O12-H08 | Recipe Card Holder - vertical | 1 |





Metal Food Factory Stick Pens

Our metal stick pen is made using 2 different types of metal to offer magnetic and metal detectable/X-Ray detectable qualities. Suitable for many applications, ideal for use in ambient working temperatures and a clean environment, or where a one piece pen is stipulated. Available in various designs for operator comfort and preference.

| CODE | DESCRIPTION | PACK QTY |
|-------------|----------------------------|----------|
| DTM 0042 | Black Standard Ink | 50 |
| DTM 0043 | Blue Standard Ink | 50 |
| DTM 0044 | Red Standard Ink | 50 |
| DTM 0045 | Green Standard Ink | 50 |
| DTM 0042 GP | Black Gel Ink | 50 |
| DTM 0043 GP | Blue Gel Ink | 50 |
| DTM 0044 GP | Red Gel Ink | 50 |
| DTM 0045 GP | Green Gel Ink | 50 |
| DTM 0042 CR | Black Pressurised Cryo Ink | 50 |
| DTM 0043 CR | Blue Pressurised Cryo Ink | 50 |
| DTM 0042 FT | Black Fine Tip Ink | 50 |
| DTM 0043 FT | Blue Fine Tip Ink | 50 |

Stainless Steel Retractable Pens

Offering all the benefits of our retractable pen and manufactured from Stainless Steel. Suitable for a range of food related environments. Includes either standard ink, pressurised ink or our **NEW** Gel & Fine Point inks.

| CODE | DESCRIPTION | PACK QTY |
|--------------------------------------|-------------------------|----------|
| Stainless Steel and Brass Pen | | |
| DTM SS 0050 | Black - Standard Ink | 10 |
| DTM SS 0051 | Blue - Standard Ink | 10 |
| DTM SS 0052 | Red - Standard Ink | 10 |
| DTM SS 0058 | Green - Standard Ink | 10 |
| DTM SSGL 0050 | Black - Gel Ink | 10 |
| DTM SSGL 0051 | Blue - Gel Ink | 10 |
| DTM SSGL 0052 | Red - Gel Ink | 10 |
| DTM SSGL 0058 | Green - Gel Ink | 10 |
| DTM SSCR 0050 | Black - Pressurised Ink | 10 |
| DTM SSCR 0051 | Blue - Pressurised Ink | 10 |
| DTM SSFT 0050 | Black - Fine Tip Ink | 10 |
| DTM SSFT 0051 | Blue - Fine Tip Ink | 10 |
| Stainless Steel Pen | | |
| DTM SS 0040 | Black - Standard Ink | 10 |
| DTM SS 0041 | Blue - Standard Ink | 10 |
| DTM SS 0042 | Red - Standard Ink | 10 |
| DTM SS 0048 | Green - Standard Ink | 10 |
| DTM SSGL 0040 | Black - Gel Ink | 10 |
| DTM SSGL 0041 | Blue - Gel Ink | 10 |
| DTM SSGL 0042 | Red - Gel Ink | 10 |
| DTM SSGL 0048 | Green - Gel Ink | 10 |
| DTM SSCR 0040 | Black - Pressurised Ink | 10 |
| DTM SSCR 0041 | Blue - Pressurised Ink | 10 |
| DTM SSFT 0040 | Black - Fine Tip Ink | 10 |
| DTM SSFT 0041 | Blue - Fine Tip Ink | 10 |

STORAGE, MIXING & HANDLING EQUIPMENT

| | |
|----|----------------------------------|
| 76 | Balers |
| 76 | Bowls |
| 76 | Buckets |
| 76 | Buckets With Lids |
| 76 | Bucket Lids |
| 76 | Funnels |
| 77 | Storage & Mixing Containers |
| 77 | Storage & Mixing Container Lids |
| 78 | Storage & Mixing Trolleys |
| 78 | Flour Scoops |
| 78 | Scoops |
| 78 | Measuring Jugs |
| 78 | Pails |
| 79 | Ladles |
| 79 | Palette Knives |
| 79 | Scrapers |
| 79 | Churns |
| 79 | Storage Jars |
| 80 | Sieves |
| 80 | Whisks |
| 80 | Stainless Steel Wipe Dispensers |
| 80 | Stainless Steel Glove Dispensers |



From food processing and brewing, through distribution and storage to serving food, installing Detectamet stainless steel equipment brings unique benefits to the food and pharmaceutical industry.

One of the great advantages of the Detectamet stainless steel range is that it imparts no taste to the food/products that is prepared on it. Typical uses include kitchens, dairies, ham curing and fish storage. The grades used by Detectamet are 304, for ambient temperatures and low acid concentrations, and 316 for harsher environments. For example 304 is used in cheese and dairy production, but where salted (ham) products is being prepared 316 is used. In ice cream production /processing 316 is specified because strong anti-bacteriological cleaning and rinsing systems are used.

A further advantage is that stainless steel is resistant to damage caused by condensation cycles in high humidity areas such as kitchens etc. The Detectamet range also incorporates the use of other suitable metals for food applications such as aluminium and brass. Declarations of conformity are available on request.

Stainless Steel Storage, Mixing & Handling Equipment



Stainless Steel Bucket



Stainless Steel Bucket Lid



Stainless Steel Funnel

| CODE | DESCRIPTION | PACK QTY |
|-------------------------|--|----------|
| Balers | | |
| DTM 0400 | 304 stainless steel - 1 ltr x 150 diameter | 1 |
| DTM 0401 | 304 stainless steel - 2.0 ltr x 200 diameter | 1 |
| DTM 0402 | 304 stainless steel - 3.0 ltr x 225 diameter | 1 |
| DTM 0403 | 304 stainless steel - 4.0 ltr x 250 diameter | 1 |
| DTM 0404 | 316 stainless steel - 1.0 ltr x 150 diameter | 1 |
| DTM 0405 | 316 stainless steel - 2.0 ltr x 200 diameter | 1 |
| DTM 0406 | 316 stainless steel - 4.0 ltr x 250 diameter | 1 |
| Bowls | | |
| DTM 0407 | 304 stainless steel - 0.75 litre | 1 |
| DTM 0408 | 304 stainless steel - 1.0 litre | 1 |
| DTM 0409 | 304 stainless steel - 2.0 litre | 1 |
| DTM 0410 | 304 stainless steel - 3.0 litre | 1 |
| DTM 0411 | 304 stainless steel - 4.0 litre | 1 |
| DTM 0412 | 304 stainless steel - 5.0 litre | 1 |
| DTM 0413 | 304 stainless steel - 6.0 litre | 1 |
| DTM 0414 | 304 stainless steel - 8.0 litre | 1 |
| DTM 0415 | 304 stainless steel - 11.0 litre | 1 |
| DTM 0416 | 304 stainless steel - 14.0 litre | 1 |
| Buckets | | |
| DTM 0419 | 304 stainless steel - 10 litre | 1 |
| DTM 0420 | 304 stainless steel - 12 litre | 1 |
| DTM 0421 | 304 stainless steel - 15 litre | 1 |
| DTM 0422 | 316 stainless steel - 10 litre | 1 |
| DTM 0423 | 316 stainless steel - 12 litre | 1 |
| DTM 0424 | 316 stainless steel - 15 litre | 1 |
| Buckets with lid | | |
| DTM 0466 | 304 stainless steel - 5 litre | 1 |
| DTM 0467 | 304 stainless steel - 10 litre | 1 |
| DTM 0468 | 304 stainless steel - 15 litre | 1 |
| DTM 0471 | 304 stainless steel - 5 litre | 1 |
| DTM 0472 | 304 stainless steel - 10 litre | 1 |
| DTM 0473 | 304 stainless steel - 15 litre | 1 |
| DTM 0474 | 304 stainless steel - 23 litre | 1 |
| DTM 0475 | 304 stainless steel - 28 litre | 1 |
| Bucket Lids | | |
| DTM 0417 | 304 stainless steel - 6 litre | 1 |
| DTM 0418 | 304 stainless steel - 8 litre | 1 |
| DTM 0425 | 304 stainless steel - 10 litre | 1 |
| DTM 0426 | 304 stainless steel - 12 litre | 1 |
| DTM 0427 | 304 stainless steel - 15 litre | 1 |
| Funnels | | |
| DTM 0476 | 304 stainless steel - 50mm diameter | 1 |
| DTM 0477 | 304 stainless steel - 80mm diameter | 1 |
| DTM 0478 | 304 stainless steel - 100mm diameter | 1 |
| DTM 0479 | 304 stainless steel - 120mm diameter | 1 |
| DTM 0480 | 304 stainless steel - 150mm diameter | 1 |
| DTM 0481 | 304 stainless steel - 200mm diameter | 1 |
| DTM 0482 | 304 stainless steel - 250mm diameter | 1 |
| DTM 0483 | 304 stainless steel - 300mm diameter | 1 |

| CODE | DESCRIPTION | PACK QTY |
|--|--|----------|
| Storage & Mixing Containers | | |
| DTM 0429 | 304 stainless without seal - 15 litre | 1 |
| DTM 0430 | 304 stainless without seal - 20 litre | 1 |
| DTM 0431 | 304 stainless without seal - 25 litre | 1 |
| DTM 0432 | 304 stainless without seal - 30 litre | 1 |
| DTM 0433 | 304 stainless without seal - 50 litre | 1 |
| DTM 0434 | 304 stainless without seal - 75 litre | 1 |
| DTM 0435 | 304 stainless without seal - 100 litre | 1 |
| DTM 0436 | 304 stainless without seal - 150 litre | 1 |
| DTM 0429 S | 304 stainless c/w seal - 15 litre | 1 |
| DTM 0430 S | 304 stainless c/w seal - 20 litre | 1 |
| DTM 0431 S | 304 stainless c/w seal - 25 litre | 1 |
| DTM 0432 S | 304 stainless c/w seal - 30 litre | 1 |
| DTM 0433 S | 304 stainless c/w seal - 50 litre | 1 |
| DTM 0434 S | 304 stainless c/w seal - 75 litre | 1 |
| DTM 0435 S | 304 stainless c/w seal - 100 litre | 1 |
| DTM 0436 S | 304 stainless c/w seal - 150 litre | 1 |
| DTM 0446 | 316 stainless without seal - 20 litre | 1 |
| DTM 0447 | 316 stainless without seal - 25 litre | 1 |
| DTM 0448 | 316 stainless without seal - 30 litre | 1 |
| DTM 0449 | 316 stainless without seal - 50 litre | 1 |
| DTM 0450 | 316 stainless without seal - 75 litre | 1 |
| DTM 0451 | 316 stainless without seal - 100 litre | 1 |
| DTM 0452 | 316 stainless without seal - 150 litre | 1 |
| DTM 0446 S | 316 stainless c/w seal - 20 litre | 1 |
| DTM 0447 S | 316 stainless c/w seal - 25 litre | 1 |
| DTM 0448 S | 316 stainless c/w seal - 30 litre | 1 |
| DTM 0449 S | 316 stainless c/w seal - 50 litre | 1 |
| DTM 0450 S | 316 stainless c/w seal - 75 litre | 1 |
| DTM 0451 S | 316 stainless c/w seal - 100 litre | 1 |
| DTM 0452 S | 316 stainless c/w seal - 150 litre | 1 |
| Storage & Mixing Container Lids | | |
| DTM 0437 | 304 stainless steel - 15 litre | 1 |
| DTM 0438 | 304 stainless steel - 20 litre | 1 |
| DTM 0439 | 304 stainless steel - 25 litre | 1 |
| DTM 0440 | 304 stainless steel - 30 litre | 1 |
| DTM 0441 | 304 stainless steel - 50 litre | 1 |
| DTM 0442 | 304 stainless steel - 75 litre | 1 |
| DTM 0443 | 304 stainless steel - 100 litre | 1 |
| DTM 0444 | 304 stainless steel - 150 litre | 1 |
| DTM 0454 | 316 stainless steel - 20 litre | 1 |
| DTM 0455 | 316 stainless steel - 25 litre | 1 |
| DTM 0456 | 316 stainless steel - 30 litre | 1 |
| DTM 0457 | 316 stainless steel - 50 litre | 1 |
| DTM 0458 | 316 stainless steel - 75 litre | 1 |
| DTM 0459 | 316 stainless steel - 100 litre | 1 |
| DTM 0460 | 316 stainless steel - 150 litre | 1 |



Stainless Steel Baler



Stainless Steel Bowl



Stainless Steel Measuring Jug



Stainless Steel Scoops



Stainless Steel Measuring Jug



Stainless Steel Measuring Jug

| CODE | DESCRIPTION | PACK QTY |
|--|---|----------|
| Storage & Mixing Container Trolleys | | |
| DTMT 0400 | 304 stainless - 20 litre | 1 |
| DTMT 0401 | 304 stainless - 25 litre | 1 |
| DTMT 0402 | 304 stainless - 30 litre | 1 |
| DTMT 0403 | 304 stainless - 50 litre | 1 |
| DTMT 0404 | 304 stainless - 75 litre | 1 |
| DTMT 0405 | 304 stainless - 100 litre | 1 |
| DTMT 0406 | 304 stainless - 150 litre | 1 |
| DTMT | 304 stainless - 200 litre | 1 |
| Flour Scoops | | |
| DTM 0553 | 304 stainless steel - 100 x 50mm diameter = 0.15 ltr | 1 |
| DTM 0554 | 304 stainless steel - 150 x 75mm diameter = 0.50 ltr | 1 |
| DTM 0555 | 304 stainless steel - 190 x 100mm diameter = 1.00 ltr | 1 |
| DTM 0556 | 304 stainless steel - 235 x 115mm diameter = 2.00 ltr | 1 |
| DTM 0557 | 304 stainless steel - 250 x 150mm diameter = 3.00 ltr | 1 |
| Scoops | | |
| DTM 0527 | 304 stainless steel - 100 x 50 = 100ml | 1 |
| DTM 0528 | 304 stainless steel - 150 x 75 = 500ml | 1 |
| DTM 0529 | 304 stainless steel - 210 x 95 = 750ml | 1 |
| DTM 0530 | 304 stainless steel - 235 x 110 = 1000ml | 1 |
| DTM 0531 | 304 stainless steel - 235 x 135 = 1700ml | 1 |
| DTM 0532 | 304 stainless steel - 250 x 150 = 2500ml | 1 |
| DTM 0533 | 304 stainless steel - 275 x 175 = 3000ml | 1 |
| DTM 0534 | 304 stainless steel - 325 x 225 = 6000ml | 1 |
| Measuring Jugs | | |
| DTM 0461 | 304 stainless steel - 0.1 litre | 1 |
| DTM 0462 | 304 stainless steel - 0.5 litre | 1 |
| DTM 0463 | 304 stainless steel - 1.0 litre | 1 |
| DTM 0464 | 304 stainless steel - 1.5 litre | 1 |
| DTM 0465 | 304 stainless steel - 2.0 litre | 1 |
| DTM 0484 | 304 stainless steel - 0.5 litres | 1 |
| DTM 0485 | 304 stainless steel - 1.0 litres | 1 |
| DTM 0486 | 304 stainless steel - 1.5 litres | 1 |
| DTM 0487 | 304 stainless steel - 2.0 litres | 1 |
| DTM 0488 | 304 stainless steel - 5.0 litres | 1 |
| DTM 0493 | 304 stainless steel - 0.6 litres | 1 |
| DTM 0494 | 304 stainless steel - 1.0 litres | 1 |
| DTM 0495 | 304 stainless steel - 2.0 Liters | 1 |
| DTM 0496 | 304 stainless steel - 3.0 Liters | 1 |
| DTM 0497 | 304 stainless steel - 5.0 Liters | 1 |
| Pails | | |
| DTM 0499 | 304 stainless steel - 2.0 litres | 1 |
| DTM 0500 | 304 stainless steel - 3.0 litres | 1 |
| DTM 0501 | 304 stainless steel - 5.0 litres | 1 |
| DTM 0502 | 304 stainless steel - 6.0 litres | 1 |
| DTM 0503 | 304 stainless steel - 8.0 litres | 1 |
| DTM 0504 | 304 stainless steel - 10 litres | 1 |
| DTM 0505 | 304 stainless steel - 12 litres | 1 |
| DTM 0506 | 304 stainless steel - 15 litres | 1 |

| CODE | DESCRIPTION | PACK QTY |
|--|---|----------|
| Ladles | | |
| DTM 0535 | 304 stainless steel - 330 x 65mm diameter = 0.075 ltr | 1 |
| DTM 0536 | 304 stainless steel - 340 x 80mm diameter = 0.10 ltr | 1 |
| DTM 0537 | 304 stainless steel - 360 x 90mm diameter = 0.175 ltr | 1 |
| DTM 0538 | 304 stainless steel - 380 x 100mm diameter = 0.25 ltr | 1 |
| DTM 0539 | 304 stainless steel - 450 x 120mm diameter = 0.50 ltr | 1 |
| Palette Knives | | |
| DTM 0507 | 304 stainless blade & handle - 100mm blade | 1 |
| DTM 0508 | 304 stainless blade & handle - 150mm blade | 1 |
| DTM 0509 | 304 stainless blade & handle - 200mm blade | 1 |
| DTM 0510 | 304 stainless blade & handle - 250mm blade | 1 |
| DTM 0511 | 304 stainless blade & handle - 300mm blade | 1 |
| DTM 0512 | 304 stainless blade & handle - 375mm blade | 1 |
| DTM 0513 | 304 stainless aluminium handle - 150mm blade | 1 |
| DTM 0514 | 304 stainless - 200mm blade | 1 |
| DTM 0515 | 304 stainless - 250mm blade | 1 |
| DTM 0516 | 304 stainless - 300mm blade | 1 |
| Stainless Steel Bench Scraper / Dough Knife | | |
| DTM 0852 | Stainless Steel Bench Scraper / Dough Knife | 1 |
| Scrapers - stainless steel blade and aluminium handle. | | |
| DTM 0517 | Blade Size 125 X 37mm (1½") | 1 |
| DTM 0518 | Blade Size 125 X 50mm (2") | 1 |
| DTM 0519 | Blade Size 125 X 75mm (3") | 1 |
| Scrapers - stainless steel blade and stainless steel handle | | |
| DTM 0522 | Blade Size 125 X 37mm (1½") | 1 |
| DTM 0523 | Blade Size 125 X 50mm (2") | 1 |
| DTM 0524 | Blade Size 125 X 75mm (3") | 1 |
| Scrapers - brass blade and stainless steel handle | | |
| DTM 0622 | Blade Size 125 X 37mm (1½") | 1 |
| DTM 0623 | Blade Size 125 X 50mm (2") | 1 |
| DTM 0624 | Blade Size 125 X 75mm (3") | 1 |
| Churns | | |
| DTM 0558 | 304 stainless steel - 2 ltr | 1 |
| DTM 0559 | 304 stainless steel - 3 ltr | 1 |
| DTM 0560 | 304 stainless steel - 5 ltr | 1 |
| DTM 0561 | 304 stainless steel - 8 ltr | 1 |
| DTM 0562 | 304 stainless steel - 10 ltr | 1 |
| DTM 0563 | 304 stainless steel - 15 ltr | 1 |
| DTM 0564 | 304 stainless steel - 20 ltr | 1 |
| DTM 0565 | 304 stainless steel - 25 ltr | 1 |
| DTM 0566 | 304 stainless steel - 30 ltr | 1 |
| DTM 0567 | 304 stainless steel - 40 ltr | 1 |
| DTM 0568 | 304 stainless steel - 50 ltr | 1 |
| DTM 0569 | 304 stainless steel - 5 ltr | 1 |
| DTM 0570 | 304 stainless steel - 10 ltr | 1 |
| DTM 0571 | 304 stainless steel - 15 ltr | 1 |
| DTM 0572 | 304 stainless steel - 20 ltr | 1 |
| Storage Jars | | |
| DTM 0540 | 304 stainless steel - H60 x 60mm diameter = 150ml | 1 |
| DTM 0541 | 304 stainless steel - H85 x 85mm diameter = 400ml | 1 |
| DTM 0542 | 304 stainless steel - H100 x 100mm diameter = 700ml | 1 |
| DTM 0543 | 304 stainless steel - H120 x 120mm diameter = 1250ml | 1 |
| DTM 0544 | 304 stainless steel - H150 x 150mm diameter = 2500ml | 1 |
| DTM 0545 | 304 stainless steel - H200 x 200mm diameter = 5000ml | 1 |



Stainless Steel Ladle



Stainless Steel Bench Scraper / Dough Knife



Stainless Steel Scraper

Brass Blade Scraper
with Detectable Plastic Handle

For our full range of Detectable Plastic Scrapers please see page 21



Stainless Steel Sieve

**HOT
PRODUCT**



**NEW
PRODUCT**



**HOT
PRODUCT**

| CODE | DESCRIPTION | PACK QTY |
|---------------|---|----------|
| Sieves | | |
| DTM 0576 | 304 stainless steel - D250 x H100mm Mesh Size 2.x 1.3mm | 1 |
| DTM 0577 | 304 stainless steel - D300 x H100mm Mesh Size 2 x 1.3mm | 1 |
| DTM 0578 | 304 stainless steel - D350 x H100mm Mesh Size 2 x 1.3mm | 1 |
| DTM 0579 | 304 stainless steel - D300 x H100mm Mesh Size 4 x 2mm | 1 |
| DTM 0580 | 304 stainless steel - D350 x H100mm Mesh Size 4 x 2mm | 1 |
| DTM 0581 | 304 stainless steel - D250 x H100mm Mesh Size 4 x 4mm | 1 |
| DTM 0582 | 304 stainless steel - D300 x H100mm Mesh Size 4 x 4mm | 1 |
| DTM 0583 | 304 stainless steel - D300 x H100mm Mesh Size 6 x 6mm | 1 |
| DTM 0584 | 304 stainless steel - D350 x H100mm Mesh Size 6 x 6mm | 1 |
| Whisks | | |
| DTM 0546 | 304 stainless steel - 250mm Length | 1 |
| DTM 0547 | 304 stainless steel - 300mm Length | 1 |
| DTM 0548 | 304 stainless steel - 350mm Length | 1 |
| DTM 0549 | 304 stainless steel - 400mm Length | 1 |
| DTM 0550 | 304 stainless steel - 450mm Length | 1 |
| DTM 0551 | 304 stainless steel - 500mm Length | 1 |
| DTM 0552 | 304 stainless steel - 600mm Length | 1 |
| Fork | | |
| DTM 0575 | 304 stainless steel | 1 |
| Shovel | | |
| DTM 0573 | 304 stainless steel | 1 |
| Spade | | |
| DTM 0574 | 304 stainless steel | 1 |

Stainless Steel Wipe Dispensers

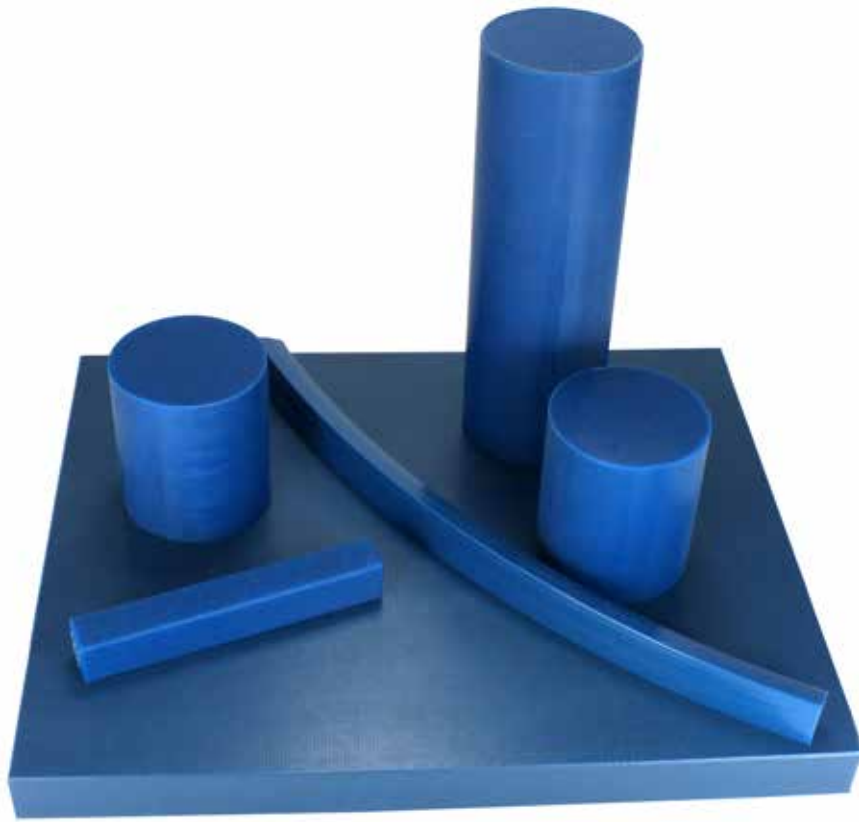
The Wipe Dispenser Holders are designed to hold one or two tubs of wipes and can be mounted on a handy wall. These will help to keep the work areas free of clutter and further reduce the risk of mislaying the tubs and the possibility of contamination.

| CODE | DESCRIPTION | PACK QTY |
|------|---|----------|
| | Stainless Steel Wall Mounted Dispenser - to suit single tub of Probe wipes | 1 |
| | Stainless Steel Wall Mounted Dispenser - to suit single tub of Disinfectant wipes | 1 |
| | Stainless Steel Wall Mounted Dispenser - to suit 1x tub of Probe & 1x tub of Disinfectant wipes | 1 |

Stainless Steel Glove Dispensers

Waste and contamination are just two challenges for food processing management teams unless they establish storage and dispensing systems that are easy to find and firmly fixed for straight forward access. Our new Stainless Steel Glove Dispensers help them to successfully meet these challenges. Made from high quality stainless steel they are supplied in four sizes to hold a single box of 100 gloves or up to four boxes loaded vertically. They can be screw mounted onto a wall where they will be easy to clean and sanitise.

Additional varieties include a single box dispenser that has a bar hook to hang from a pipe, bar or the top of a panel. Another option is a single box that is enclosed with a front oval exit and a small side access to allow for replacement of an empty box.



We have developed a wide range of detectable engineering materials and equipment for the food and pharmaceutical industries. This part of our product range grows yearly, as we continue to provide solutions for our customers. Not only can we offer the standard products in this catalogue, but also provide a bespoke design and development service which is provided by a team of dedicated staff.

DETECTABLE ENGINEERING PRODUCTS

| | |
|----|---|
| 82 | Detectasil® Detectable Silicone Sealant |
| 83 | Detectable O-Rings & Seals |
| 83 | Detectable Sifter Balls |
| 83 | Detectable Silicone Rubber |
| 84 | Detectable Acetal |
| 84 | Detectable PTFE |
| 85 | Detectable Food Grade UHMWPE |
| 85 | Detectable PA6 Filled |
| 85 | Detectable Food Grade Belting |
| 86 | Detectable Polyurethane Belt |
| 86 | Detectable Polythene |
| 86 | Detectable Mouse Box |
| 86 | Detectable Gasket Scrapers |
| 87 | Detectable Compounds |



Detectable Silicone Sealant

Detectasil® is a detectable silicone sealant that can be ‘seen’ by metal and X-ray detection systems in the food industry. The sealant is used in structural fitting and equipment installation and reduces the risk of undetected contamination of food products.

It is available in white or blue, and the 310ml tube fits standard applicators. The detectable additive tastes nasty to rodents and deters them from eating the sealant after application.

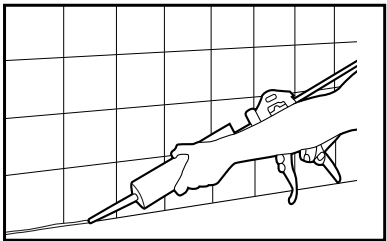
KEY FEATURES

- Detectable by standard metal and X-ray detection systems
- Designed for use in temperatures from -30°C to +150°C
- Unpalatable to rodents
- Standard applicator gun

SUITABLE APPLICATIONS

- ✓ Window and Door Frames
- ✓ Wall panels
- ✓ Machinery
- ✓ Finishing
- ✓ Worktops & laminates
- ✓ Sinks and other wet installations

AVAILABLE COLOURS



| CODE | DESCRIPTION | PACK QTY |
|------------|-------------------------------|----------|
| DTM 0617 B | Detectasil 310ml Tube - Blue | 1 |
| DTM 0617 W | Detectasil 310ml Tube - White | 1 |



Metal Detectable O-Rings

Specifically developed to meet the stringent demands of the food and pharmaceutical industries. The New Detectamet Metal Detectable range of O-Rings includes FDA compliant (on most sizes) or food safe grades of EPDM, Nitrile and Fluorocarbon (FKM) compounds.

Fragments of this as small as 2mm can be identified by metal detector equipment.

Features of Metal Detectable O-Rings include:

- Early detection and containment of contamination
- Reduced product loss
- Increased productivity
- FDA compliant elastomer materials
- Free from animal derived ingredients
- Temperature range from – 40 Degrees C to + 200 Degrees C
- Blue seals to assist in easy identification
- Detectamet compounds can be moulded into O-Rings and custom components
- Detectamet O-rings available from 0.25mm to over 2 metres in diameter, in any combination of ID and cross section, both in small quantities and large volumes.

Material Options

- FKM/FPM
- NBR or BUNA N
- EPD/EPDM
- Silicone

Please contact our technical team with your specific requirements.



Detectable Sifter Cleaning Balls

We offer a wide range of cleaner balls to fit any sifting application. Sifter balls work inside screen decks to prevent the screens from clogging which leads to a loss in sifter capacity along with an increase in sifter tailings or overs.

Balls are available in 80 shore hardness and range of sizes from 11mm (7/16") up to 250mm (10"). Please contact us with your requirements.



Detectable Silicone Rubber Extrusions

We are able to offer a metal detectable rubber silicone extrusion for general purpose compound having good mechanical properties. Features include good heat stability inside temperature range, supplied in specific colour; blue. The popular use of this product is found in Food and Dairy, Bakery, Beverage, Pharmaceutical and OE Markets.

A metal detectable general purpose compound having good mechanical properties. Features include good heat stability inside temperature range, supplied in specific colour; blue.

All the constituents in this compound conform to FDA regulation 21 CFR 177.2600.

Shore hardness; 75° +/- 5°

Elongation at break; 320 %

Tensile strength; 8.0 MPA

Tear strength; 12 KN/M

Specific gravity; 1.22

Temp range; -70°C to +200°C (with heat stabiliser up to 250°C)

Compression set; 32%

We are also available to manufacture extrusions to suit your specific applications. Please contact us with your requirements.



| CODE | DESCRIPTION | PACK QTY |
|-------------|---|----------|
| DTM 0602 | Detectable Silicone Rubber Extrusion 45 shore | 1 |
| DTM 0602HST | Detectable Silicone Rubber Extrusion With Heat Stabilizers 45 shore | 1 |



Detectable Silicone Rubber Sheet

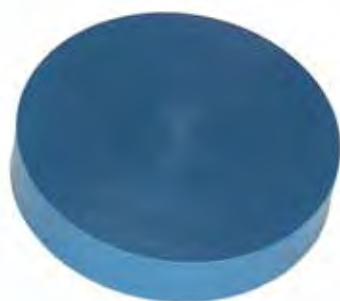
Metal Detectable Rubber Sheet. Impregnated Silicone Calendered Sheet Grade.

Available in 1.5mm, 2.0mm, 3.0mm, 5.0mm and 6.0mm as standard (minimum order 2mt x 1mt. also available in 1mt increments up to 10mt long).
Heat Stabilising Available 300mm wide only - please contact us direct for details.

This product contains only ingredients that are listed by the American Food & Drugs Administration (FDA) under the 21 CFR number 177-2600.

Typical Applications: Metal detectable seals, gaskets, joints and strips used in sensitive food, drink and pharmaceutical applications.

| CODE | DESCRIPTION | PACK QTY |
|----------|--|----------|
| DTM 0605 | Sheet size 2m x 1m (longer lengths available POA) - 2m x 1m x 1.5 mm thick | 1 |
| DTM 0606 | Sheet size 2m x 1m (longer lengths available POA) - 2m x 1m x 2 mm thick | 1 |
| DTM 0607 | Sheet size 2m x 1m (longer lengths available POA) - 2m x 1m x 3 mm thick | 1 |
| DTM 0608 | Sheet size 2m x 1m (longer lengths available POA) - 2m x 1m x 5 mm thick | 1 |
| DTM 0609 | Sheet size 2m x 1m (longer lengths available POA) - 2m x 1m x 6 mm thick | 1 |



Detectable Acetal

- Good balance of stiffness and impact strength for applications where higher dimensional stability is required.
- Metal and visual detection by blue colour
- Detection by x-ray also possible
- Continuous use temperature up to 105 Celsius (221 Fahrenheit)

Applications

- Scrapers
- Funnels
- Guiders
- Grippers
- Gears

Sizes

- Extruded Rods 30/50/80mm x 1000/3000mm
- Extruded Plates 20/40/80 x 610 x 1000/3000mm



Detectable PTFE

Detectable Teflon. Metal Detectable PTFE for use in the Food Industry by Detectamet.

Suitable for scrapers, wearstrips, bushes in high temperature applications.

- Chemical resistant.
- Corrosion resistant.
- Can withstand temp of +260 degrees and down to -260 degrees.
- FDA compliant

Available as semi finished product or machined components.

Please contact our technical team with your specific requirements.

Detectathene Detectable Food Grade UHMWPE

Specifically developed for the Food, Pharmaceutical, Packaging, Bottling & Canning, General Engineering Industries this unique Detectamet "Detectathene" a metal detectable ultra high molecular weight polythene is suitable for use in the following applications: *Wear Strips, Guide Rails, Corner Wearbends, Chain Guides, Bearings, Bushes, Scrapers, Rollers, Idler Wheels, Liners, General Machined Parts etc.

*In addition to these applications we are able to manufacture parts to your specification.

- Metal Detectable
- X Ray Visible
- Approved for direct contact with food
- Excellent wear resistance
- High Impact Resistant
- Easy to Machine
- Self Lubricating (good bearing properties)
- Abrasion Resistant
- Water repellent
- Acid resistant
- Corrosion resistant
- Vibration & noise dampening
- Blue Colour
- Chemical Resistant
- Lightweight
- Cost Effective
- Dirt Repellent
- Suitable for low temperature environments (-260 degrees + 80 degrees Celsius)

Sheet Sizes Available:

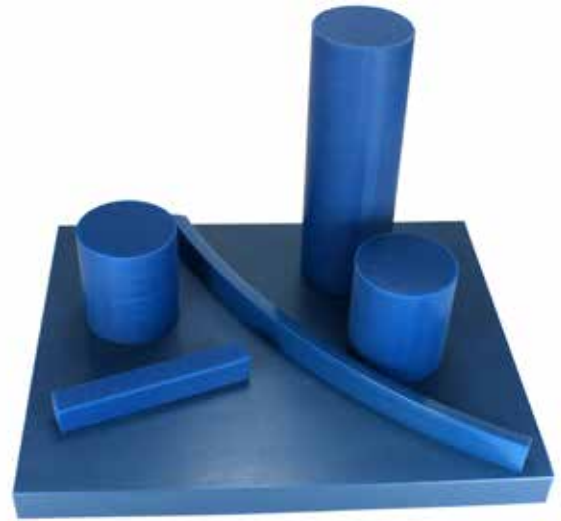
- 2020mm x 1010mm
- 3030mm x 1010mm
- 2020mm x 1220mm
- 2440mm x 1220mm
- 3050mm x 1220mm

Thicknesses Available:

- 8, 10, 12, 15, 20, 25, 30, 35, 40, 45, 50, 55, 60, 70, 80, 90 & 100mm

Also available as a rod in diameter from 25mm to 200mm

Lengths available 1m, 2m and 3m.



Detectable PA6 Filled

High wear and fatigue resistance

Lower moisture absorption than standard PA6

Metal and visual detection by blue colour

Detection by x-ray also possible

Continuous use temperature up to 85 Celsius (185 Fahrenheit)

Applications

- Thrust Washers
- Seals
- Rolls

Sizes

- Extruded Rods 30/50/80mm x 1000/3000mm
- Extruded Plates 20/40/80 x 610 x 1000/3000mm

Detectable Food Grade Belting

Metal detectable Plastic. Polypropylene, Polyethylene, Acetal materials.

Straight running and side flexing versions.

Closed top to 60% open area.

Suitable for dry, wet and frozen applications.

Please contact our technical team with your specific requirements.

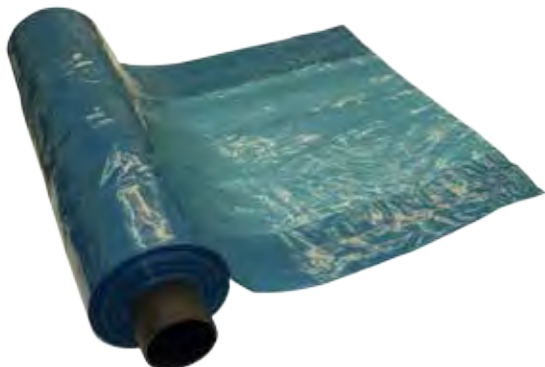


Detectathane Polyurethane Belt

Detectathane is part of a new series of film grade polyester-based thermoplastic polyurethanes (TPU), specifically targeted for extruded profiles, film and sheet applications, moulded parts, and other high end extrusion applications. Detectathane exhibits excellent abrasion resistance and toughness, and conforms to FDA food contact directives and has been approved for use by the USDA. (Equipment Acceptance Certificate)

For technical data please see our website - www.detectamet.co.uk

Detectamet are also available to manufacture extrusions/belts to suit your specific applications. Please contact us with your requirements.



Detectable Polythene

Recognizing the issue of risk of film contamination in the food and pharmaceutical processing industry, Detectamet have developed a unique metal detectable polythene film.

The Detectable film replaces standard thick blue polyethylene film with a stiffer, stronger film that is detectable down to very small particle sizes by the standard metal detection systems already in place on food processing lines. Detectamet Polythene is available in sheet, reel or bag format in a wide range of sizes and colours to suit many applications.

- Roll Size: 850mm wide x 38 micron
- Colour: Blue



Detectable Mouse Box

A traditionally sized box with a host of new features, many of which are exclusive to the Detectable Mouse Box. Larger and more enticing to mice.

New user-friendly locking system with a universal stainless steel key.

| CODE | DESCRIPTION | PACK QTY |
|----------|--|----------|
| DTM 1137 | Detectable Mouse Box | 50 |
| DTM 1138 | Metal Key to suit Detectable Mouse Box | 1 |



Detectable Handle Stainless Steel Gasket Scraper

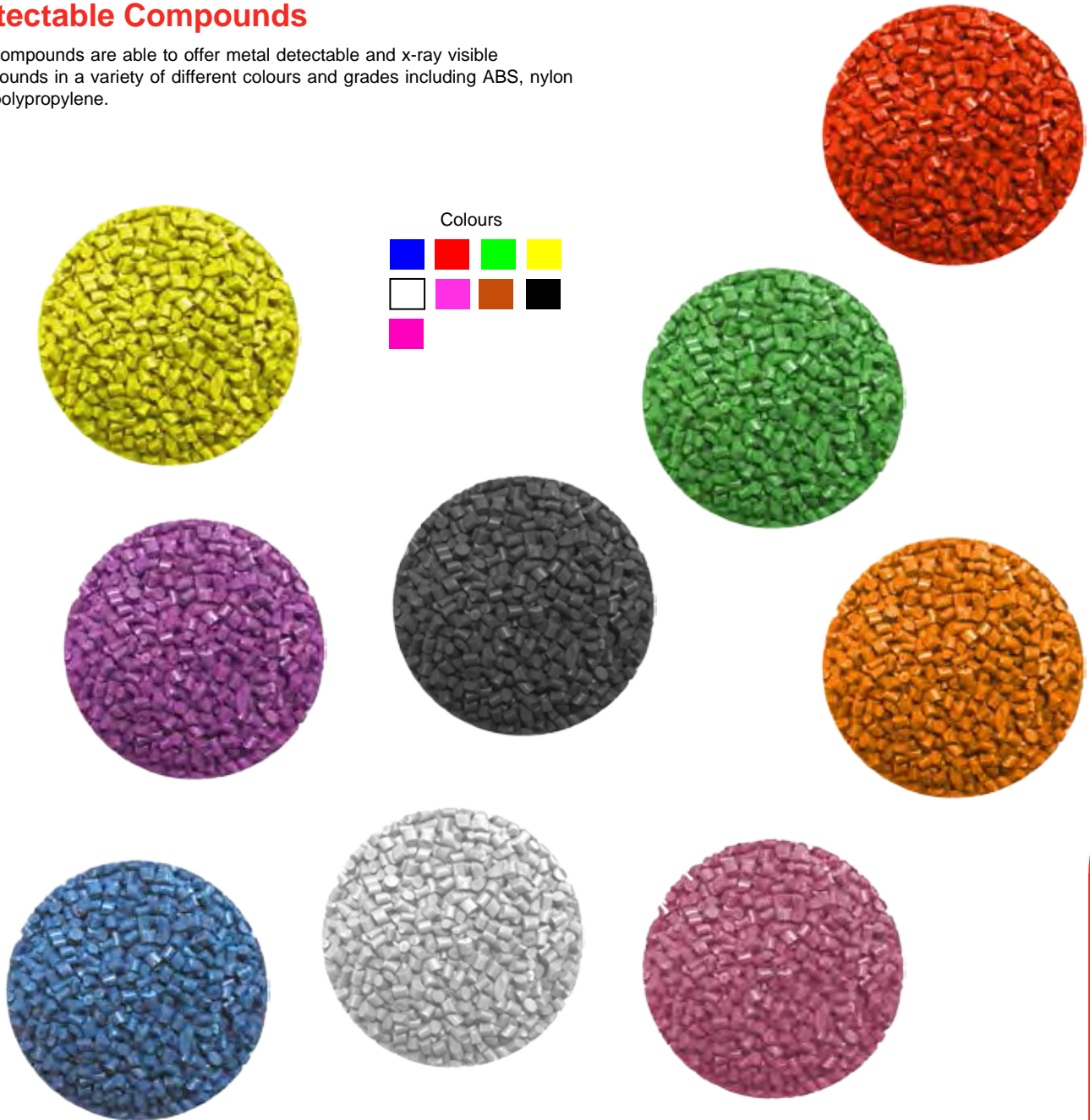
High quality heavy duty detectable gasket scrapers. Ideal for gasket scraping, removal of rust, grease or other similar debris from difficult to reach areas.

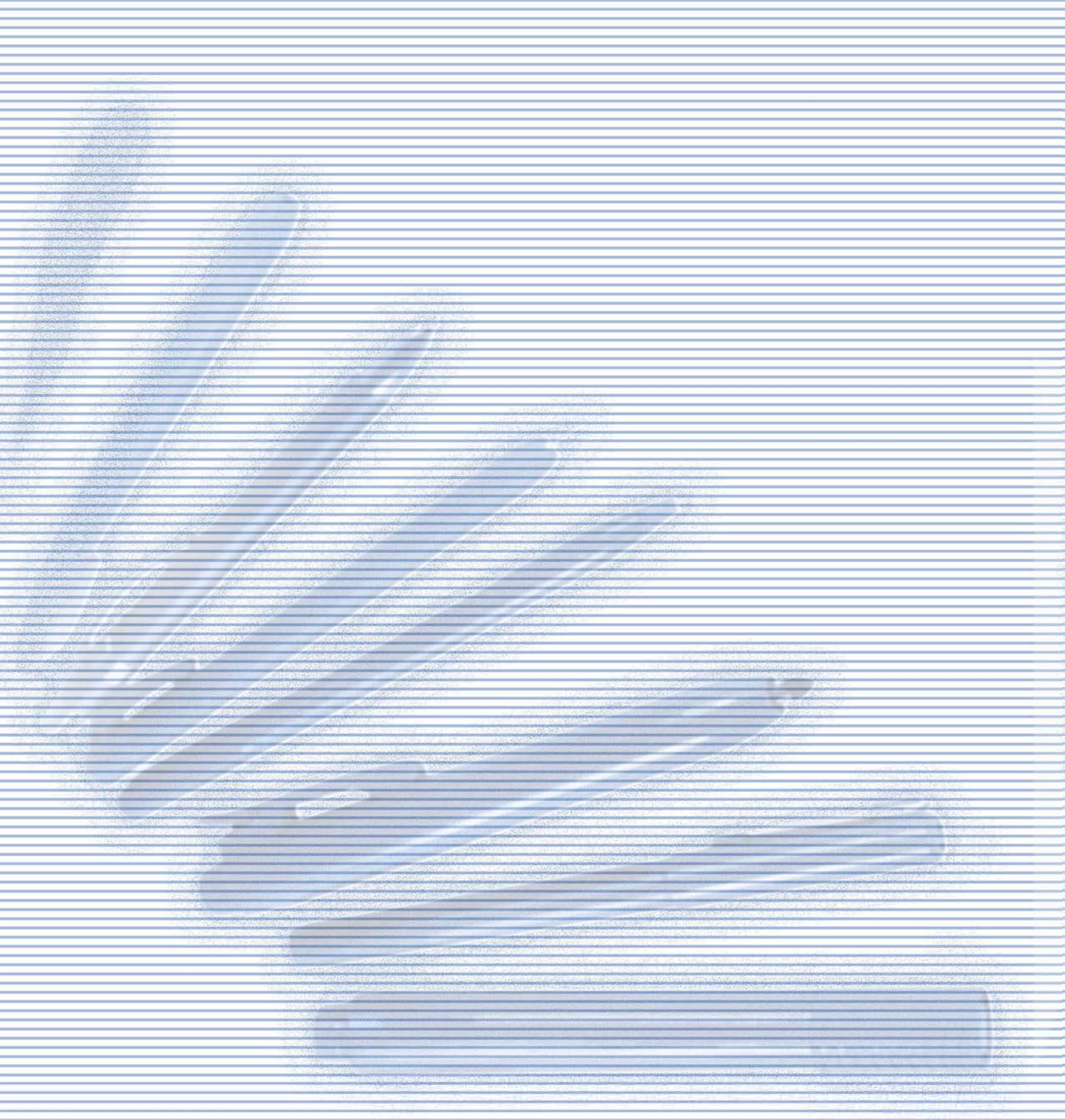
Made with a stainless steel blade for extra strength, durability and long service life. The handle is easy to grip and manufactured from Detectamet's detectable plastic.

| CODE | DESCRIPTION | PACK QTY |
|----------|---|----------|
| DTM 0633 | Stainless Steel Scraper - 20mm wide blade | 1 |
| DTM 0634 | Stainless Steel Scraper - 16mm wide blade | 1 |
| DTM 0635 | Stainless Steel Scraper - 12mm wide blade | 1 |

Detectable Compounds

Our compounds are able to offer metal detectable and x-ray visible compounds in a variety of different colours and grades including ABS, nylon and polypropylene.





www.siscel.es | Tel 670 588 199 | info@siscel.es